



LOWER LANDING PARK RENOVATION PLAN

DESIGN ADVISORY COMMITTEE MEETING
JUNE 15, 2017

Don Varney
don.varney@ci.stpaul.mn.us
Bianca Paz
bianca.paz@ci.stpaul.mn.us



MEETING GOALS

- 1. Introduce the project and review survey results and site analysis**
- 2. Determine programmatic activities**
- 3. Identify committee preferences for park development**

ROLE AND EXPECTATIONS OF DAC

- Provide a better understanding of community needs and desires for park renovation
- Act as a community liaison to transmit ideas to the design advisory committee
- Contribute and evaluate ideas, balanced between personal and community perspectives
- Provide guidance on park renovation priorities

Expectations for Committee members include:

- Represent and communicate the community needs and desires for the site
- Respect for different perspectives
- Courtesy of one another
- Contribute in a positive way
- Attend every meeting or send a representative

PROJECT GOAL

Develop a Renovation Plan for improvements to Lower Landing Park

Scope of Work

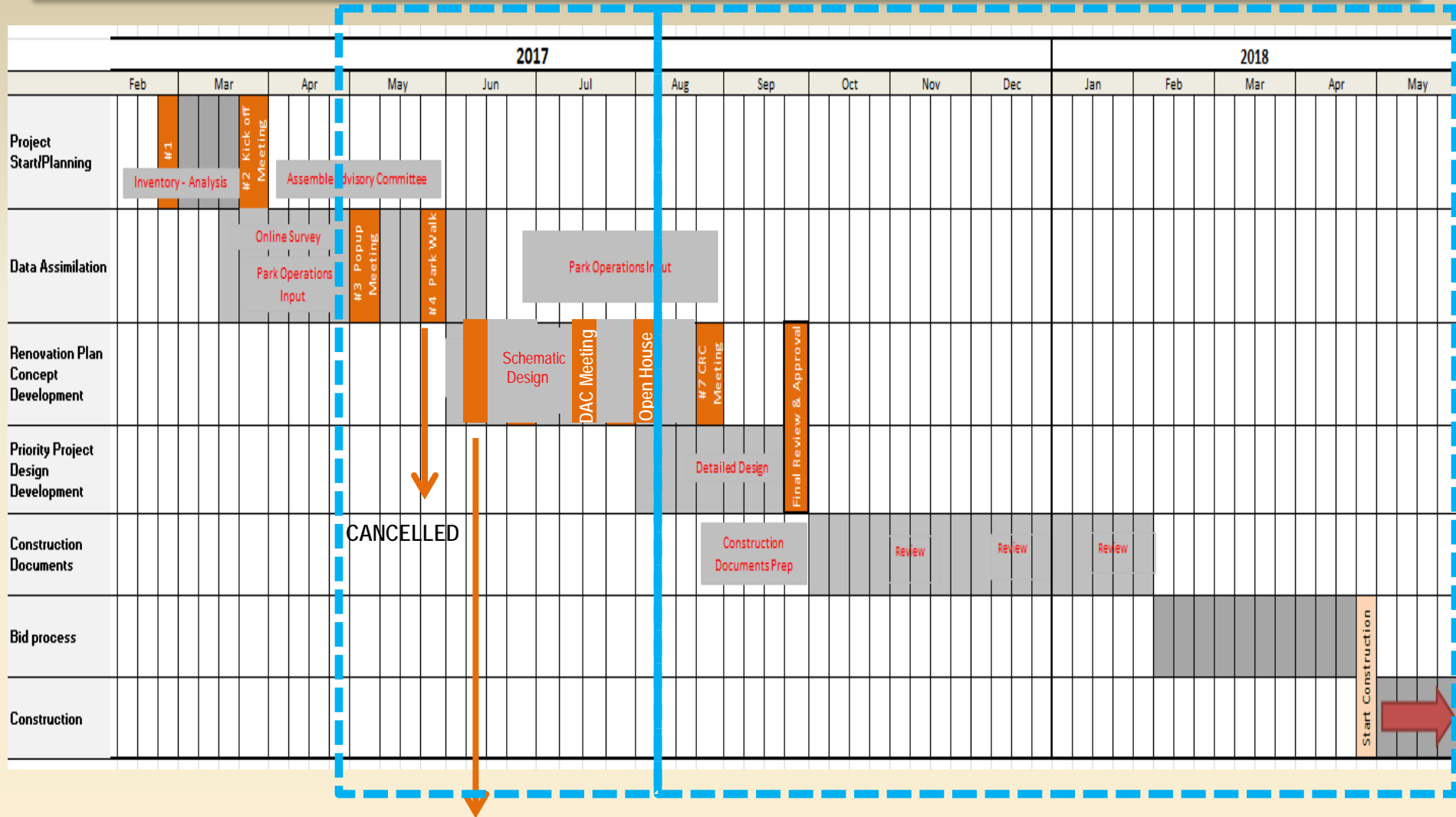
Park Renovation Planning Phase

- **Review existing GRP** plan and evaluate how those plans can be adjusted to fit into the current neighborhood context
- **Engage the community in re-affirming the park's purpose** and establish near term (next 5 yrs.) goals and objectives
- **Prioritize the neighborhood needs** and how they can be supported by one or more aspects of the Renovation Plan development

Project Development Phase

- **Select a construction project** based on the priorities established in the Park Renovation Planning phase
- **Re-convene a community task force** to develop the selected construction project
- **Begin construction** project design and development

PROJECT SCHEDULE



TODAY: DAC MEETING

HISTORY OF PARK

12,000
years ago



Glacial River Warren Falls, was originally located near what was to become downtown Saint Paul. The huge rush of water coming down the channel eroded out the glacial debris that filled the valley and began undermining the limestone cap rock of the river bed.

Huge boulders of limestone caprock, no longer supported by the soft, easily-eroded St. Peter's sandstone that supported it, broke off moving the lip of the waterfall upstream. The waterfall moved

The area between the limestone bluffs and Jackson Street was wetland

- 1500



-The Dakota people have been intimately connected to the region within and beyond the boundaries of "Minnesota" for a very long time...

This is a place where Dakota people started. We were here to greet the explorers and traders who arrived in the 1500's. We were here to greet the soldiers who arrived in the 1800's. The village sites where we lived and the rivers we navigated ; changed though they have been over the last 150 years; keep their place of importance in the hearts of Dakota people.-

Images and content sources:
BDOTE MEMORY MAP
<http://bdotememorymap.org>

1800



Saint Paul was head of navigation on the Mississippi River. Lower Landing entry for most of the people and goods coming north

Landings near the cliffs coupled with the rapids and falls farther upstream made St. Paul the end of the line for Mississippi River steamboat traffic.

1880



Arrival point for immigrants entering Minnesota

African Americans settled near the river banks where steady work and food was available

Landing was located at a natural break in the Mississippi River's 80 foot high bluffs

1937



Known as Lambert Landing. It was constructed by the Works Progress Administration (WPA) as part of the revival of St. Paul riverfront

Named after Colonel George Lambert, prominent figure to modernize Upper Mississippi river navigation

1950



Landing was removed for the construction of Warner road

1992



Warner Rd. re-located creating public riverfront Park land.

New Park included:
Samuel Morgan Trail
Scenic Overlook
Picnic tables
Riverboat landing
Wetlands

Artists moved to Lower-town attracted by low rents, raw spaces.

Lowertown designated Historic District

PRESENT



Present Day Lambert's Landing is marked by a plaque located in the section of St. Paul commonly known as Lowertown.

Mississippi barges and fleets are assembled here before they are delivered to their downstream destination.

Images and content sources:
Saint Paul Historical - Historic Saint Paul . National Park Services. Online.stpaul.gov

GREAT RIVER PASSAGE

Strategies and Projects

Lower Landing Park

Management

- Develop a master plan for Lower Landing Park that is consistent with the Great River Passage Master Plan
- Program the Parks to support the changing needs of Lowertown
- Develop interpretive programs that focus on the "working river"

Design and Construction

Road and Trails

- Implement a pedestrian/bicycle trail connection from Lafayette Bridge to the riverfront trail
- Provide a new parking area that supports Lower Landing with access from Warner Road
- Improve the Samuel Morgan Regional Trail by separating bicycle and pedestrian paths where possible
- Add Park trail loops to support park design and activities
- Provide a Park trail connection from Union Depot to Trout Brook along the north side of the Railroad lines

Structures and Related Improvements

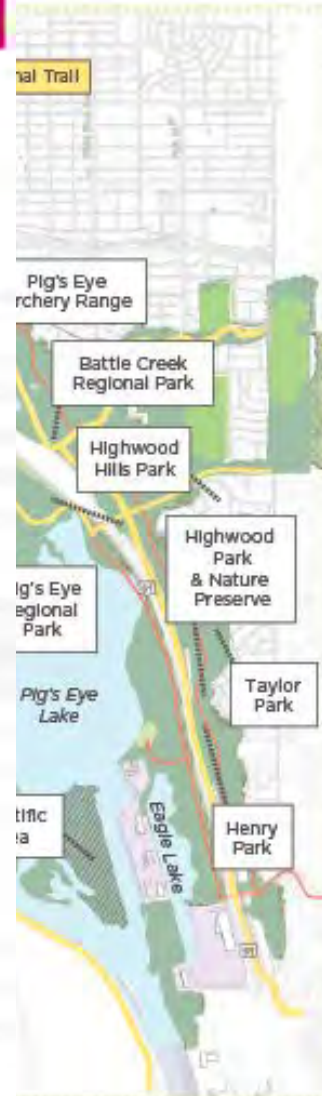
- Extend Regional trail connection over signature bridge from Lower Landing Park to Bruce Vento Nature Sanctuary
- Implement signage and wayfinding systems
- Provide a new restroom building to support picnic and playground areas
- Provide a scenic overlook to the river from landforms in the park

Recreation Improvements/Use areas

- Add a Broadway Terrace plaza area for community events
- Add a dog park and playground that support the Downtown and Lowertown neighborhoods

Landscape and Site Improvements

- Create sculpted landforms with vibrant and colorful natural gardens that incorporate a variety of native plants
- Redesign river shoreline where possible to allow revegetation and provide "touch the water" access
- Provide and enhance stormwater treatment areas in the park landscape



PREVIOUS PLANS

CITY COMPREHENSIVE PLAN - PARKS & REC CHAPTER

- Promote Active Lifestyles
- Ensure convenient and equitable access to parks and recreation facilities
- Complete the trail and bikeway system
- Provide functional, accessible and secure bike racks at all parks and recreation centers
- Provide programming and education on biking and walking
- Provide better public information on getting to parks and recreation facilities on foot and bike
- Safe and secure access to and use of parks and trails
- Improve public safety in parks
- Apply Crime Prevention through Environmental Design (CPTED) principles and design review for Parks and Recreation projects.
- Improve communications on public safety issues
- Explore increasing the use of proven technologies in Parks and Recreation facilities to improve public safety and prevent crime.



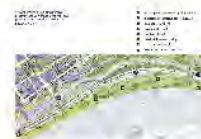
SYSTEM PLAN RECOMMENDATIONS (2010)

- Trails: Trout Brook Regional Trail from Lower Landing Park to Lake McCarrons County Park in Roseville
- Downtown Parks: The largest Park in downtown at 21 acres is the Lower Landing Park created by the relocation of Warner Road just east of Jackson Street. The park currently has a multi-use paved trail, river overlook, and numerous picnic tables and benches.
- Create an inviting trail connection from downtown to Bruce Vento Regional Park and Swede Hollow Park
- Add off leash dog park areas and children's play areas and public art for increased livability and to attract future residents to the downtown area.
- Add amenities such as outdoor exercise stations, shaded seating areas, and other elements that appeal to a burgeoning senior population



GREATER LOWERTOWN MASTER PLAN (2012)

- Growth in the neighborhood will require better connections to existing parks and open spaces.
- Recreational connections are incomplete; they can be completed east of the Lafayette Bridge.
- Connect Lowertown to Bruce Vento Nature Sanctuary that offers unique access to nearby wilderness
- The Lowertown population will grow in numbers and diversity; the neighborhood's open spaces should adapt to these changes.
- There is a lack of recreational opportunities. Strategies Proposed:
 - Locate additional recreation space east of the Lafayette Bridge.
 - Activate the Riverfront with a promenade, Lower Landing Park and programming per the Great River Passage Plan
 - Incrementally improve sidewalks to become part of the neighborhood's valued open space system.
 - Create roof top gardens as part of the open space system.
 - Connect the Bruce Vento Nature Sanctuary, Swede Hollow Park, and other East Side recreational destinations.



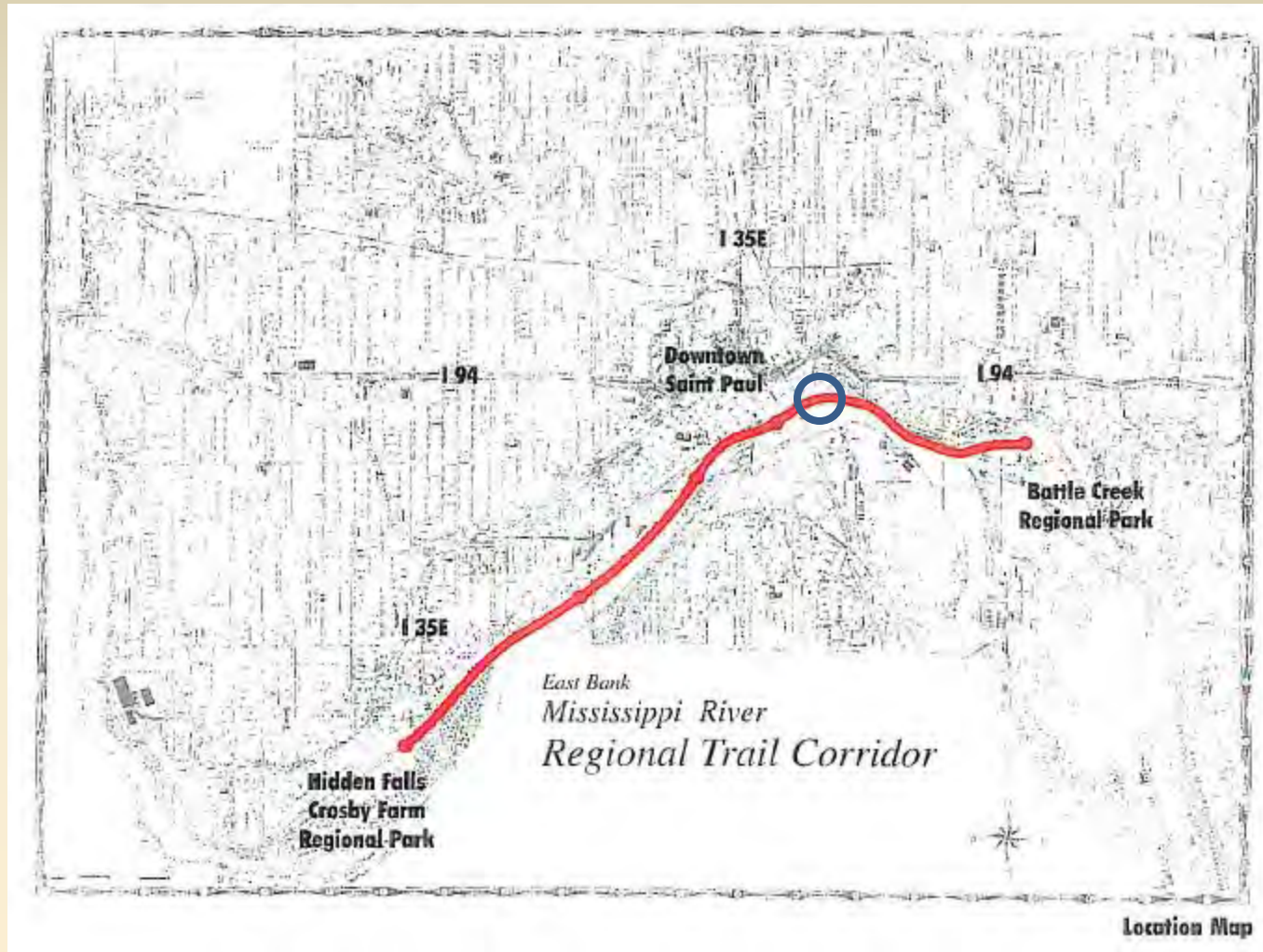
TROUT BROOK REGIONAL TRAIL (2009) COMMUNITY VISION FOR LOWER PHALEN CREEK

(St. Paul Department of PED and the office of the Dayton's Bluff District 4 Community Council)

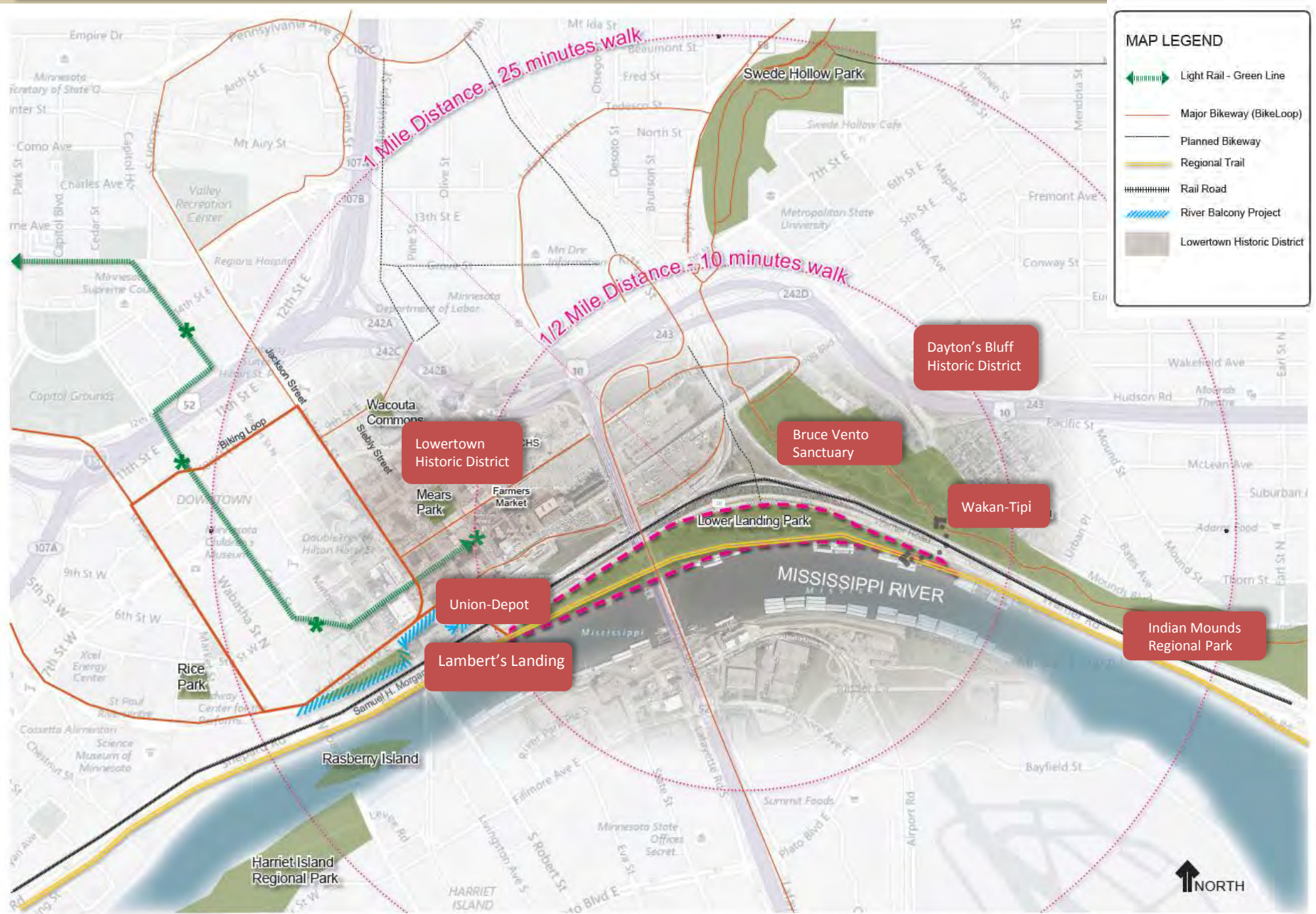
- Reclaim former railyards in the Trout Brook Corridor and the Lower Phalen Creek area and restore habitat and ecological health of the corridor and floodplain.
- Restore a portion of Trout Brook and wetland in the greenway corridor and the Lower Phalen Creek site. Create trail and natural community connections from McCarrons Lake to the Mississippi River.
- Provide a natural amenity to adjacent neighborhoods and Lowertown.
- Connect to the Mississippi River with trail under Kellogg Bridge and along an existing gravel road toward Warner Road.
- Cross Warner Road and railroad tracks with a pedestrian bridge.
- Create a link between University Avenue and Warner Road that will provide the critical trail link to the Mississippi River and Sam Morgan Regional Trail.



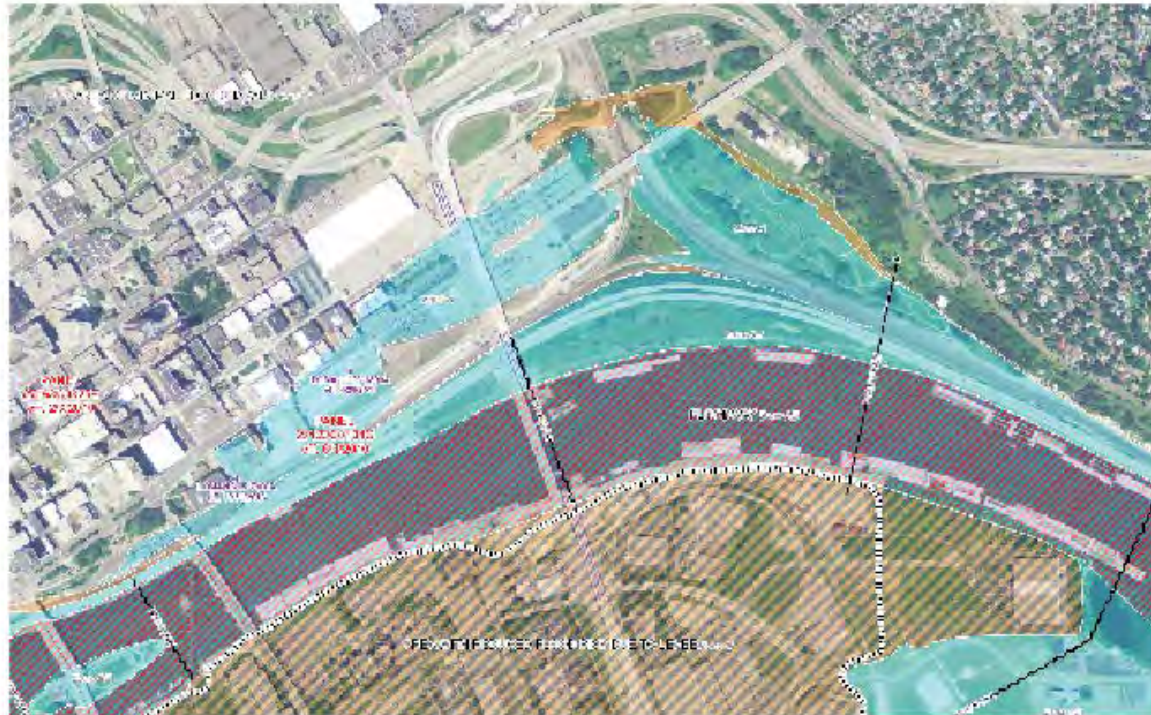
SAMUEL H. MORGAN REGIONAL TRAIL



SITE CONTEXT







ENVIRONMENTAL CONTEXT



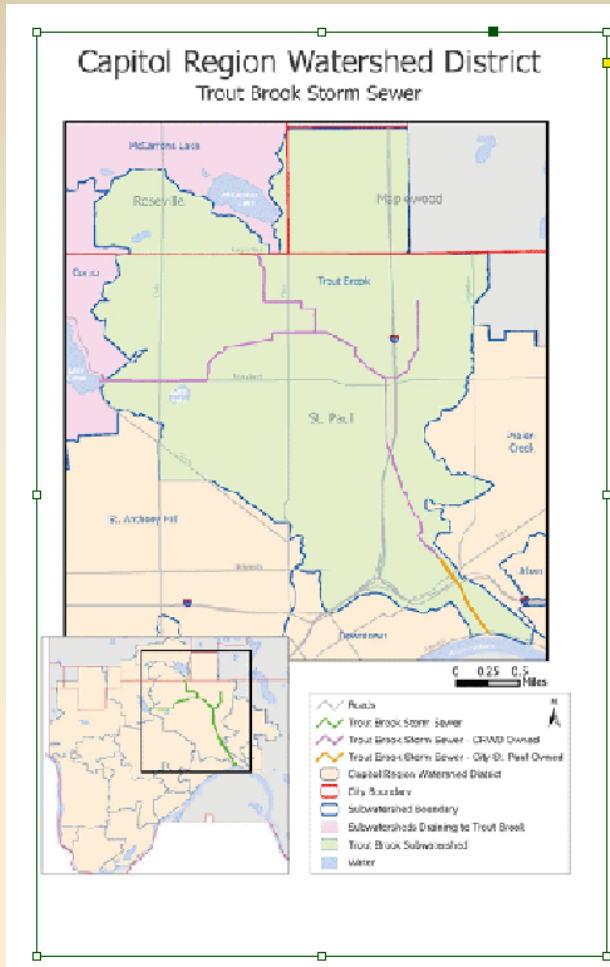
FEMA Flood Hazard Zones Map

Low

-  1% Annual Chance Flood Hazard
-  0.2% Annual Chance Flood Hazard
-  Regulatory Floodway
-  Area with Reduced Risk Due to Leave

Lower Landing resides within the river's natural flood plain

ENVIRONMENTAL CONTEXT



“The River beneath our feet and the river in front of us”



A century-old storm sewer system

Trout Brook Storm sewer receives a majority of the runoff from the City of Saint Paul and it does not discharge directly to the Mississippi River; instead it connects to Saint Paul's trunk sewer, with then discharges into the river just downstream of Lambert's Landing.

It carries 3.9 billion gallons of rainwater and snow melt from neighborhoods in St. Paul, Roseville, Falcon Heights and Maplewood to the Mississippi River

EXISTING CONDITIONS



EXISTING CONDITIONS – WEST Lower Landing



OPPORTUNITIES & CONSTRAINTS – WEST Lower Landing

1

River front sitting area needs update. It would be helpful to add Park sign/ trail map

2

Explore visual attraction along the walkway. More art work?

3

Limited Parking. 24 stalls. Need for expansion?

4

Keep tree grove but improve tree planting conditions

5

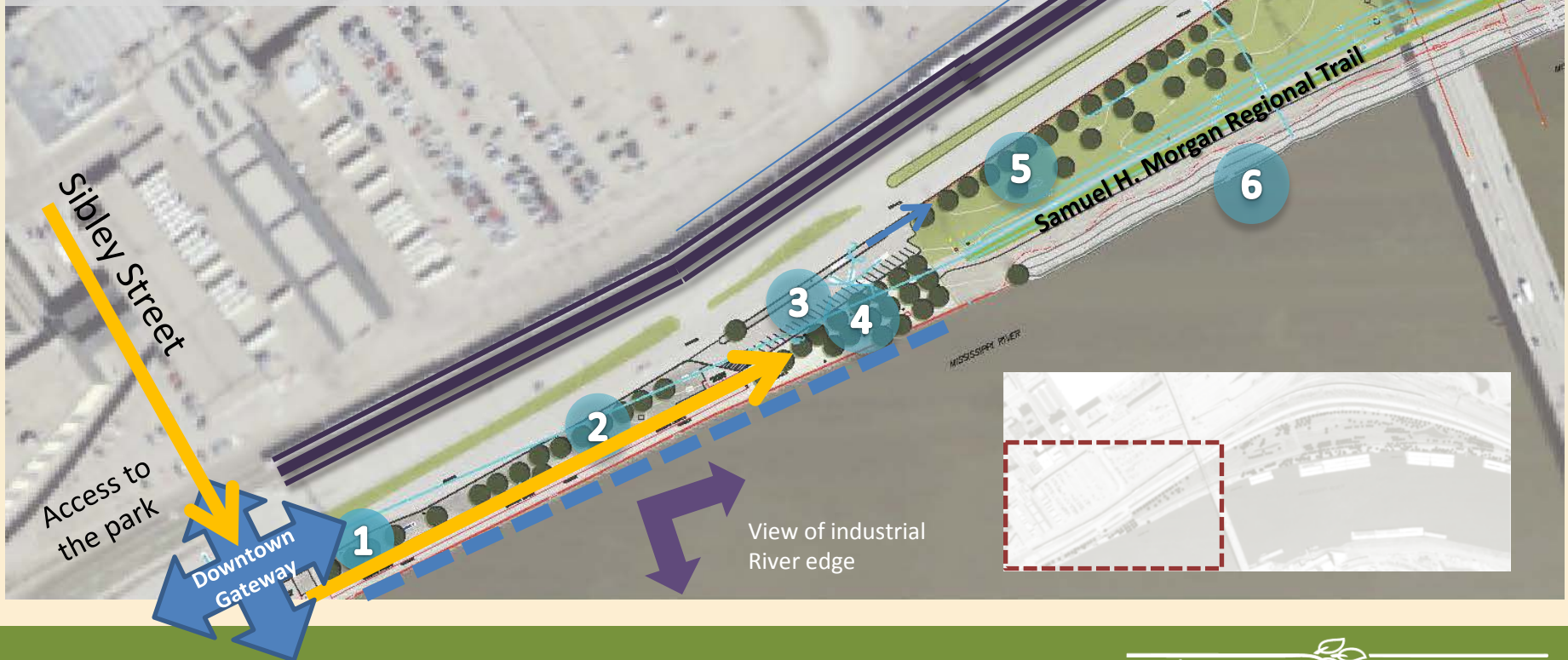
Flat open green area with trees, close to the road. If the area gets programmed may need protection from the road

6

River front edge was designed to provide natural access to view the river. Vegetation blocks the views

7

Shaded area under bridge. Too noisy. Opportunity for transitional activities, public art, dog park



EXISTING CONDITIONS – MID Lower Landing



EXISTING CONDITIONS – MID Lower Landing



OPPORTUNITIES & CONSTRAINTS – MID Lower Landing



OPPORTUNITIES & CONSTRAINTS – MID Lower Landing

1

Look into a designed landscape / land forms/ wildflower garden

2

More rest areas along the trail. More benches, shade, drinking water/ views

3

Opportunity to use the open space in variety of ways. Active recreation/ group activities. Views of downtown and bluffs

4

Deck renovation and seating improvements



EXISTING CONDITIONS- **EAST** Lower Landing



EXISTING CONDITIONS- **EAST** Lower Landing



OPPORTUNITIES & CONSTRAINTS – EAST Lower Landing



1

Scenic setting for nature appreciation. Subject to seasonal conditions: insects

2

Open views to the river. Opportunities for a seating area with views of the bluffs. Fishing opportunity.

3

Opportunities for visual elements, art, garden, interpretation signs



COMMUNITY INPUT

Pop-Up meeting stand

May 6, 2017

Preserve:

Bike, walk paths

Trees for shade

View of path from street. It doesn't feel safe

Add:

A stage at Lower Landing Park for to play

Garbage

Cans

Dog Park

Parking for food truck or coffee shop

Picnic table, more comfortable, accessible area

Shades with rain covers

Urban agriculture opportunities – community garden

Remove:

Over spending, keep tax down

Keep in mind

Garden

Tennis courts

Concession to park under railroad is daunting

Way finding from Lowertown to park + back

Signs to get there

Keep some areas dog free for kids



Why is Lower Landing Park important to you?				
LOCATION	CONTEXT	USE	OTHER	
I live in Saint Paul Downtown Lowertown Waxan ku noosana Saint Paul	Geological and Land History Warren falls/Bluffs Ouhka lya daska saarikoda Warren dhoos / Bluffs	Active open space Walking/running/biking workout Nodamyaada dhuuka Nodamyaada		
I work in St. Paul Downtown Lowertown Waxan ka shagayey ee Saint Paul	Landing History First Settlements Ouhka lya saarikoda lya horeyky soo gallooga waxaan garayna dyaaladana	Walking/relaxing/ contemplate river/ downtown views Socodka in mullay aya wada		
I live in Dayton's Bluff Waxan ku noosaha Dayton Bluff	Mississippi River History "working river" Road, rail, airport Saarikoda Mississippi River	Picnic Family activities Ouhka geynada wada hel		
I come to Downtown St. Paul for recreation Iyo geynada magaalada Noone for meadowland	Environmental Systems Nodamyaada dhaqanka	Walking/playing with dogs		
It is convenient for me to use the Light Rail Iyo luma luma magaalada Noone meadowland	Underground systems: Troutbrook stormwater Nodamyaada dhuuka horeyky	Bird Watching & Nature Exploration Ouhka horeyky horeyky iya saarikoda Noone dhaqanka		

LOWER LANDING PARK

CITY OF SAINT PAUL
DEPARTMENT OF PARKS & RECREATION
DESIGN AND CONSTRUCTION DIVISION
MAY 2017

P.A.R.K. ANALYSIS

How would you improve Lower Landing Park?

P
reserve

What does the park have that you use and enjoy and should be protected

A
dd

What things or activities would you like to see added to the park?

R
emove

What does the park have that should be revised or removed?

K
eep in mind

What should we consider during the design process?

NEXT STEPS

- Produce Schematic Design
- Propose Park Program
- Find Parks precedents related to the vision
- Review with Parks Operation and Maintenance
- Bring schematic design to the DAC and community for feedback