



SWEDE HOLLOW PARK MASTER PLAN

PARKS COMMISSION
FINAL PREFERRED MASTER PLAN
THURSDAY, SEPTEMBER 12, 2019



Swede Hollow Park Master Plan

September 12, 2019

- 1. Welcome
- 2. Project Schedule & Community Engagement
- 3. Site Context & Existing Conditions Overview
- 4. Preferred Master Plan
- 5. Discussion / Questions



SWEDE HOLLOW PARK MASTER PLAN

Thursday, September 12, 2019 | Parks Commission Meeting
Project Manager: Cheeneng Yang, Cheeneng.Yang@ci.stpaul.mn.us | (651) 266-6414
Brett Hussong, Brett.Hussong@ci.stpaul.mn.us | (651) 266-6420

AGENDA



SCHEDULE & COMMUNITY ENGAGEMENT

SWEDE HOLLOW PARK MASTER PLAN

Thursday, September 12, 2019 | Parks Commission Meeting

Project Manager: Cheeneng Yang, Cheeneng.Yang@ci.stpaul.mn.us | (651) 266-6414
Brett Hussong, Brett.Hussong@ci.stpaul.mn.us | (651) 266-6420



2018

2019

AUG.-SEPT.

RESEARCH & ANALYSIS

- + Project Kickoff
- + Data Gathering - Demographics & Site Analysis
- + Identify Stakeholders
- + Define roles between Lower Phalen Creek Project & City of Saint Paul

OCT.-JULY

COMMUNITY ENGAGEMENT

- + Site Tours
 - Sept. 2018 - Existing Conditions
 - Feb. 2019 - History & Immigrants
 - Mar. 2019 - Dakota Culture & History
- + Community Outreach by LPCP (Oct. 2018 - May 2019)
 - Survey
 - Focus Groups: Hmong Elders
- + Identify Swede Hollow Park Priorities (April 2019)
- + Preliminary Concept (May 2019)
- + Concept - Art in the Hollow (June 2019)
- + Master Plan [DRAFT] - Payne-Phalen Community Council (July 2019)

APR.-DEC.

MASTER PLAN DOCUMENT

- + Preliminary Concept (May 2019)
- + Concept - Art in the Hollow (June 2019)
- + Develop cost estimate with ranked project priorities (August 2019)
- + Master Plan Development (May-Oct. 2019)
 - Citywide Transportation Meeting Sept. 2019
 - Parks Commission Sept. 2019

WE ARE HERE!



SWEDE HOLLOW PARK MASTER PLAN

Thursday, September 12, 2019 | Parks Commission Meeting
Project Manager: Cheeneng Yang, Cheeneng.Yang@ci.stpaul.mn.us | (651) 266-6414
Brett Hussong, Brett.Hussong@ci.stpaul.mn.us | (651) 266-6420

PROJECT SCHEDULE



OCT. 2018 - JULY 2019

COMMUNITY ENGAGEMENT

- + Site Tours
 - Sept. 2018 - Existing Conditions
 - Feb. 2019 - History & Immigrants
 - Mar. 2019 - Dakota Culture & History
- + Community Outreach by LPCP (Oct. 2018 - May 2019)
 - Survey
 - Focus Groups: Hmong Elders
- + Identify Swede Hollow Park Priorities (April 2019)
- + Preliminary Concept (May 2019)
- + Concept - Art in the Hollow (June 2019)
- + Master Plan [DRAFT] - Payne-Phalen Community Council (July 2019)

*The Community Engagement Report by Lower Phalen Creek Project is available on the project website.



Fall Tour: Existing Conditions



Winter Tour: History & Immigrants



Art in the Hollow



LPCP Focus Group: Hmong Elders



Spring Tour: Dakota Culture & History

SWEDE HOLLOW PARK MASTER PLAN

Thursday, September 12, 2019 | Parks Commission Meeting
Project Manager: Cheeneng Yang, Cheeneng.Yang@ci.stpaul.mn.us | (651) 266-6414
Brett Hussong, Brett.Hussong@ci.stpaul.mn.us | (651) 266-6420

COMMUNITY ENGAGEMENT



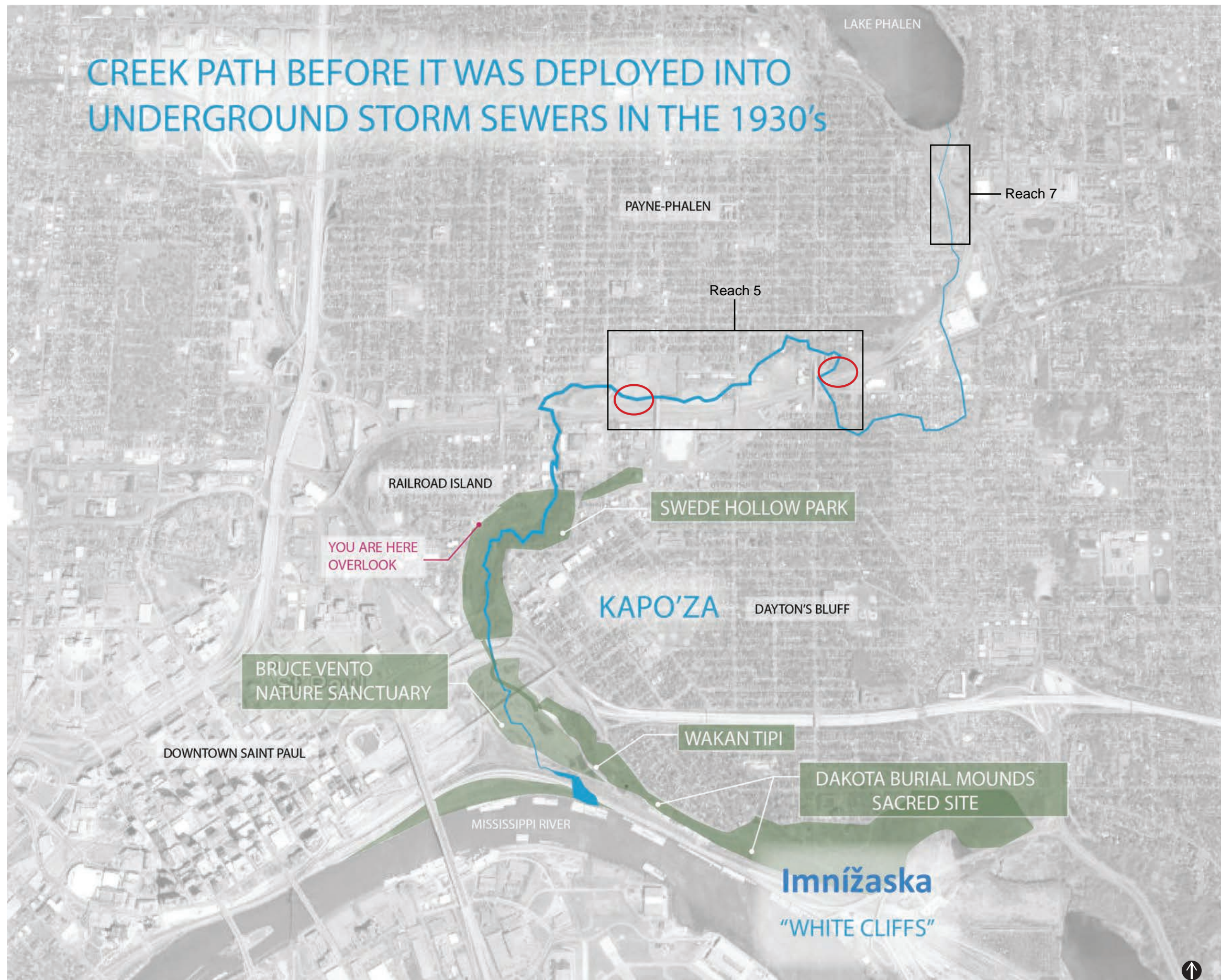
SITE CONTEXT & EXISTING CONDITIONS

SWEDE HOLLOW PARK MASTER PLAN

Thursday, September 12, 2019 | Parks Commission Meeting
Project Manager: Cheeneng Yang, Cheeneng.Yang@ci.stpaul.mn.us | (651) 266-6414
Brett Hussong, Brett.Hussong@ci.stpaul.mn.us | (651) 266-6420



CREEK PATH BEFORE IT WAS DEPLOYED INTO UNDERGROUND STORM SEWERS IN THE 1930's



SWEDE HOLLOW PARK MASTER PLAN

Thursday, September 12, 2019 | Parks Commission Meeting
Project Manager: Cheeneng Yang, Cheeneng.Yang@ci.stpaul.mn.us | (651) 266-6414
Brett Hussong, Brett.Hussong@ci.stpaul.mn.us | (651) 266-6420

HISTORIC PHALEN CREEK



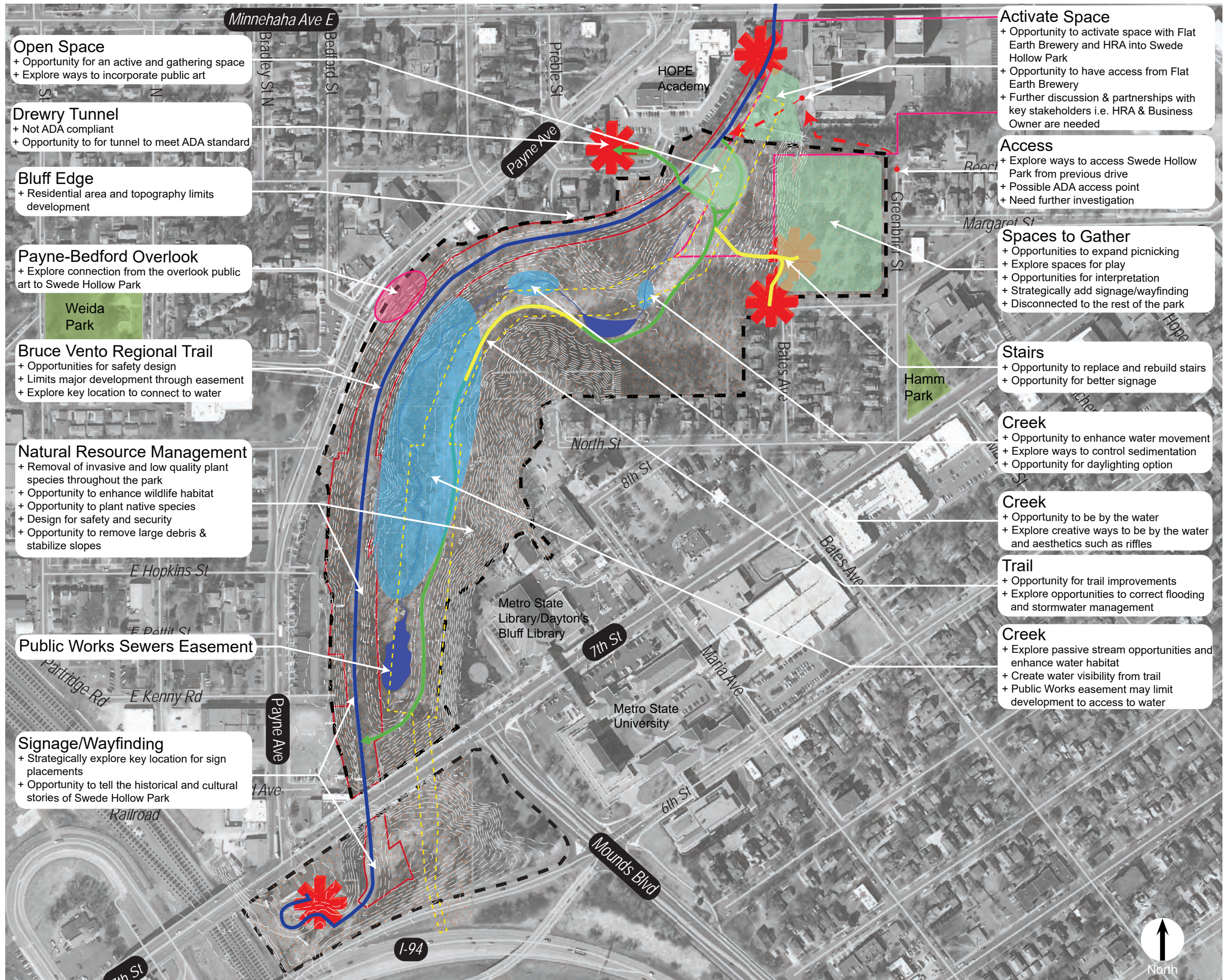


SWEDE HOLLOW PARK MASTER PLAN

Thursday, September 12, 2019 | Parks Commission Meeting
 Project Manager: Cheeneng Yang, Cheeneng.Yang@ci.stpaul.mn.us | (651) 266-6414
 Brett Hussong, Brett.Hussong@ci.stpaul.mn.us | (651) 266-6420

SITE CONTEXT





Three major constraints:



Public Works Easements



Topography



Water

LEGEND

- Access
- Existing Park Trail
- Bruce Vento Regional Trail
- Swede Hollow Park Limits
- Ramsey Co. Regional Railroad Authority Limits
- HRA Limits
- Trail/Stair Improvements
- Public Works Easement
- Potential Area for Active Spaces
- Area for Potential Water Improvements
- Natural Resources Management

SWEDE HOLLOW PARK MASTER PLAN

Thursday, September 12, 2019 | Parks Commission Meeting
Project Manager: Cheeneng Yang, Cheeneng.Yang@ci.stpaul.mn.us | (651) 266-6414
Brett Hussong, Brett.Hussong@ci.stpaul.mn.us | (651) 266-6420

EXISTING CONDITIONS



MASTER PLAN

SWEDE HOLLOW PARK MASTER PLAN

Thursday, September 12, 2019 | Parks Commission Meeting
Project Manager: Cheeneng Yang, Cheeneng.Yang@ci.stpaul.mn.us | (651) 266-6414
Brett Hussong, Brett.Hussong@ci.stpaul.mn.us | (651) 266-6420



SWEDE HOLLOW PARK | A NATURAL CORRIDOR

Vision Statement:

Swede Hollow Park is a unique green space with a rich history located in the Dayton’s Bluff and Railroad Island neighborhoods. The master plan honors the natural, historical, and cultural elements to bring awareness of its significance in the City of Saint Paul. The plan is to maintain a natural corridor for a high quality ecosystem for the wellbeing of the people, flora, fauna, and water.



SWEDE HOLLOW PARK

A NATURAL CORRIDOR

Goals & Priorities

1. PARK INTERPRETATION & SIGNAGE

- + Natural, historical, & cultural stories
 - Migratory Bird Flyway, Dakota culture, Immigrants
- + Identify preferred sign locations
- + Connection to other destinations
 - Bruce Vento Nature Sanctuary, Downtown Saint Paul, East Side Heritage, Hamm Park
- + Opportunity for creative public art

2. ACCESS TO WATER

- + Daylighting Phalen Creek
- + Water quality with additional investigation on water source
- + Creative design by the water and education opportunity
- + Alternate trail type i.e. Boardwalk

3. NATURAL RESOURCE MANAGEMENT

- + Removal of invasive species i.e. Buckthorns, green ashes, Siberian elm, low quality vegetation
- + Enhance wildlife habitat i.e. Rusty Patched Bumble Bee, planting native plant species

4. VISIBILITY/SAFETY

- + Lighting
- + Emergency Call-Boxes
- + Removal of low quality vegetation
- + Activating the park brings more awareness i.e. partnering with Planning & Economic Development (PED) to activate north part of the park
- + Provide equitable park access

5. SPACE

- + Provide space to gather & events
- + Spiritual/Cultural healing space
- + Activating spaces with passive recreation & programming

5. OTHER

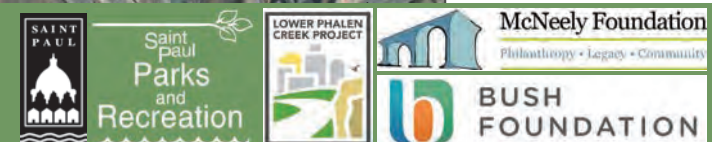
- + Trail improvements
- + Public Art
- + Play Space



SWEDE HOLLOW PARK MASTER PLAN

Thursday, September 12, 2019 | Parks Commission Meeting
 Project Manager: Cheeneng Yang, Cheeneng.Yang@ci.stpaul.mn.us | (651) 266-6414
 Brett Hussong, Brett.Hussong@ci.stpaul.mn.us | (651) 266-6420

MASTER PLAN GOALS & PRIORITIES



Swedehenge

Drewry Tunnel

- + Historical Bridge - Historical Consultant Study Required
- + Consult and work with Historic Preservation Commission (HPC) & Bridges Division for improvements
- + Jurisdiction: Public Works, Bridges Division

Central Gathering Space

Improve Staircase

Multi-use Overlook

Lighting

- + Low dim amber light along Bruce Vento Regional Trail
- + Option to automatically turn off when park closes
- + Park light on bluff (active space)
- + Emergency Call Box

Acquire Future Property

- + Recommendation to acquire property, if and when, private owners decides to sell

Signage

- + Interpretative Signs
- + Wayfinding Sign
- + Seating places

Bluff

- + Recommendation to remove large debris
- + Improve and stabilize slopes

Sewer Easement

Enhance Water & Wetland

- + Middle pond and lower pond are registered as National Wetlands
- + Enhance aquatic habitat for wildlife
- + Educational opportunities
- + Celebrate water - natural, historical, and cultural significance
- + Water feasibility study required for either water recirculation or water filtration

South Access via 7th/Payne Ave.

- + 7th Ave Bridge is a National Historic Civil Engineering Landmark
- + Future improvements involve HPC & Bridges division
- + Jurisdiction: Public Works, Bridges Division

Public Art

- + Creative artwork to celebrate the stories of the park
- + Bring awareness to the park i.e. gateways
- + Enhance park user experience

North Access via Bruce Vento Regional Trail

Proposed ADA Ramp Access from Drewry Lane

Future Land Acquisition

- + 3 acre land in Housing Redevelopment Authority (HRA) property transfer to City for parkland

Access from Greenbrier St.

- + Shared path in HRA property - require easement

Bluff Area

- + Picnic Area
- + Play Area
- + Wood Land Garden
- + Improve path network

Historical Remnants

- + Historical Significance
- + Community wants remnants to be protected & have historical status
- + Consult with HPC for process
 - Can be driven by community

Natural Resources Management

- + Remove invasive species and low quality vegetation throughout park
- + Enhance wildlife habitat i.e. Rusty Patched Bumble Bee, Migratory Birds

LEGEND

- Property Line
- - - Sewer Easement
- ★ Park Access
- Proposed East Access Route
- Proposed North Access Route
- Future Bikeway
- Existing Trail
- Proposed Boardwalk
- Proposed Pedestrian Trail
- Proposed Trail Improvement
- ▮ Proposed Site Furnishings
- Existing Park Light
- Proposed Emergency Call Box
- Proposed Park Light
- Existing Park Signage
- Proposed Interpretive Sign
- Proposed Park Sign
- Proposed Wayfinding Sign
- ★ Existing Public Art
- ★ Proposed Public Art

SWEDE HOLLOW PARK MASTER PLAN

Thursday, September 12, 2019 | Parks Commission Meeting
Project Manager: Cheeneng Yang, Cheeneng.Yang@ci.stpaul.mn.us | (651) 266-6414
Brett Hussong, Brett.Hussong@ci.stpaul.mn.us | (651) 266-6420

MASTER PLAN

PARK-WIDE RECOMMENDATIONS



Existing Park Light Proposed Lighting



Proposed Park Signage



Existing Public Art: Swedehenge



Proposed Public Art Ideas

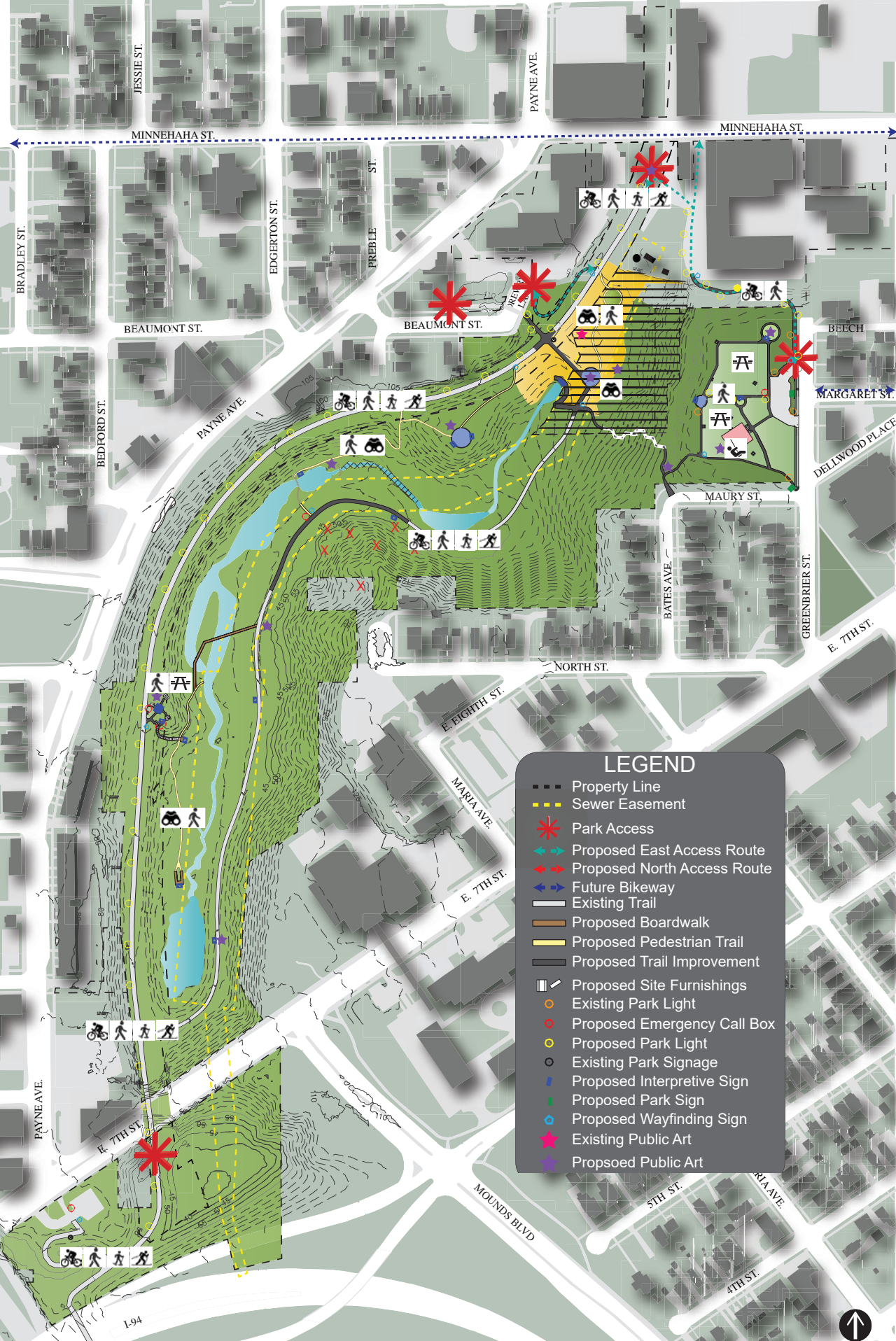


SWEDE HOLLOW PARK MASTER PLAN

Thursday, September 12, 2019 | Parks Commission Meeting
 Project Manager: Cheeneng Yang, Cheeneng.Yang@ci.stpaul.mn.us | (651) 266-6414
 Brett Hussong, Brett.Hussong@ci.stpaul.mn.us | (651) 266-6420

LIGHT | SIGN | ART
 PRECEDENT IMAGES





Walking/Hiking



Bicycle



Cross Country Skiing



Snowshoeing



Wildlife Observation



Play Area



Picnicking



SWEDE HOLLOW PARK MASTER PLAN

Thursday, September 12, 2019 | Parks Commission Meeting
 Project Manager: Cheeneng Yang, Cheeneng.Yang@ci.stpaul.mn.us | (651) 266-6414
 Brett Hussong, Brett.Hussong@ci.stpaul.mn.us | (651) 266-6420

MASTER PLAN

PASSIVE RECREATION & PARK AMENITIES



Ranked Projects

1	Water Feasibility Study	\$88,000.00	8	Staircase	\$315,000.00	15	Informal Gathering Space	\$70,000.00
2	Historical Remnants	\$15,200.00	9	Mid-Aggregate Trails <small>(Northern Aggregate Trails)</small>	\$64,000.00	16	Centralized Plaza	\$160,000.00
3	Oak Savanna or Bee Lawn	\$55,000.00	10	Wood Land Garden	\$44,000.00	17	Park Signage <small>(Wayfinding & Interpretation Signage)</small>	\$121,000.00
4	Phalen Creek Restoration <small>(Upper, Middle, Lower Pond)</small>	\$1,000,000.00	11	Boardwalk	\$500,000.00	18	Future Land Acquisition	TBD
5	Lower Aggregate Trails <small>(Southern Aggregate Trails)</small>	\$30,000.00	12	Bluff Overlook	\$580,000.00	19	Parking Lot	\$100,000.00
6	Lighting - Regional Trail	\$600,000.00	13	Multi-use Overlook	\$81,000.00	20	Overall Natural Resources Management	\$500,000.00
7	Greenbrier Access	\$970,000.00	14	Play Area	\$300,000.00			

Cost assume 2019 pricing and do not include inflation.

SWEDE HOLLOW PARK MASTER PLAN

Thursday, September 12, 2019 | Parks Commission Meeting
Project Manager: Cheeneng Yang, Cheeneng.Yang@ci.stpaul.mn.us | (651) 266-6414
Brett Hussong, Brett.Hussong@ci.stpaul.mn.us | (651) 266-6420

RANKED MASTER PLAN PROJECTS



GRACIAS - UA TSAUG - TOKSA AKE - THANK YOU



SWEDE HOLLOW PARK MASTER PLAN

Thursday, September 12, 2019 | Parks Commission Meeting
Project Manager: Cheeneng Yang, Cheeneng.Yang@ci.stpaul.mn.us | (651) 266-6414
Brett Hussong, Brett.Hussong@ci.stpaul.mn.us | (651) 266-6420