

PROJECT INFORMATION



PROJECT VISION

A modern, inclusive facility serving the Payne-Phalen community with recreation, fitness, and programs for residents of all ages and backgrounds in the neighborhood and surrounding community.

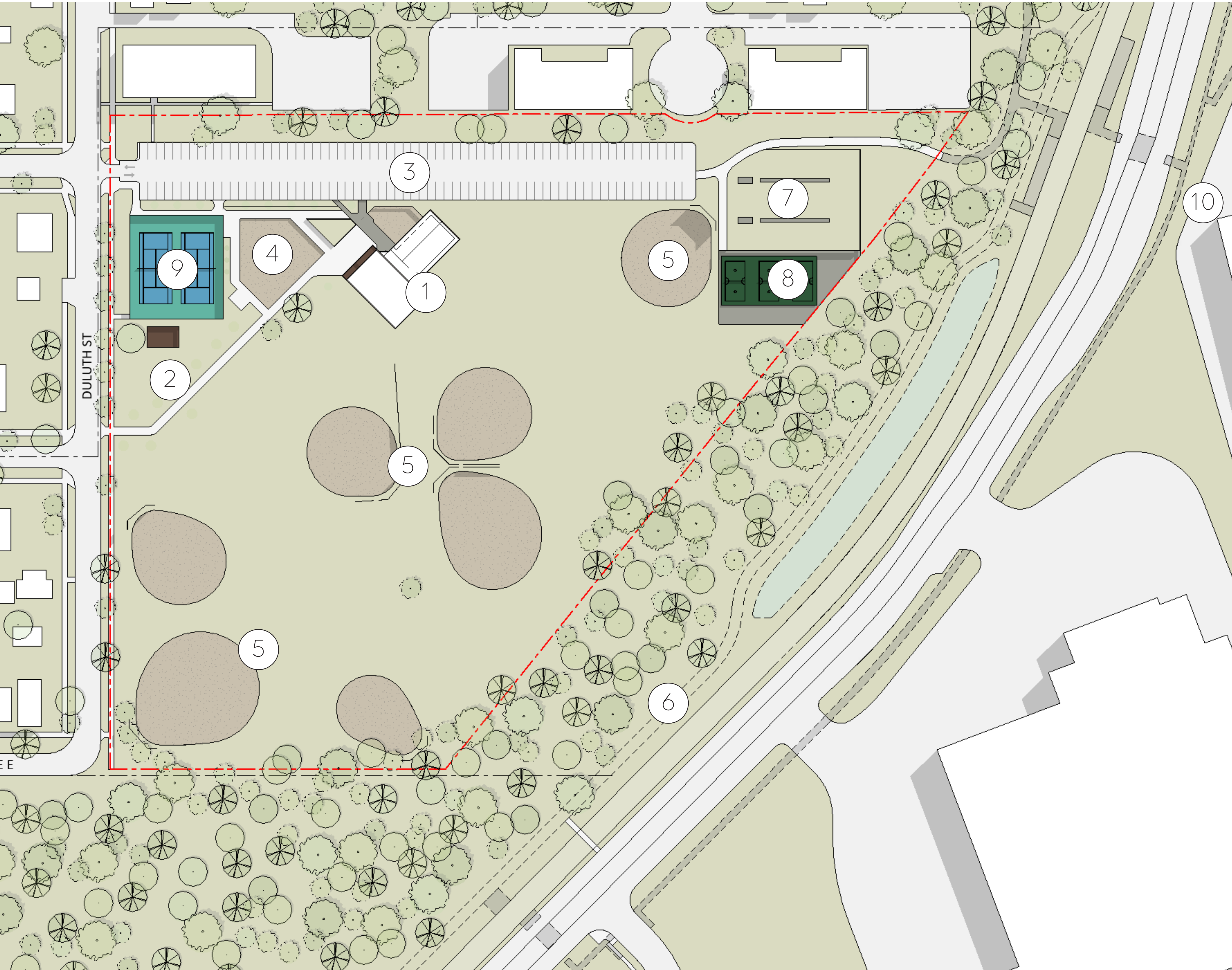
GUIDING PRINCIPLES

- 1. Flexible spaces allowing for inclusive and evolving programs for all ages, needs, and interests.
- 2. Durable, beautiful design with strong community connection and ownership.
- 3. Sustainable practices, including visible energy use and responsible resource management.
- 4. Accessible via multiple transportation options (EV, bike, pedestrian, etc).
- 5. Serve the local neighborhood while also being a regional draw.
- 6. Active year-round programming with a focus on both active and passive uses.
- 7. A focal point for community gatherings with a clear identity and purpose.
- 8. Create a functional, safe, and welcoming space.

SCHEDULE

2024						2025										2026										2027										2028													
Dec	Jan	Feb	Mar	Apr	May	Jun	Jul	Aug	Sep	Oct	Nov	Dec	Jan	Feb	Mar	Apr	May	Jun	Jul	Aug	Sep	Oct	Nov	Dec	Jan	Feb	Mar	Apr	May	Jun	Jul	Aug	Sep	Oct	Nov	Dec	Jan	Feb	Mar	Apr	May	Jun	Jul						
Predesign					Schematic Design					Design Development					Construction Documents					Bid					Construction																								

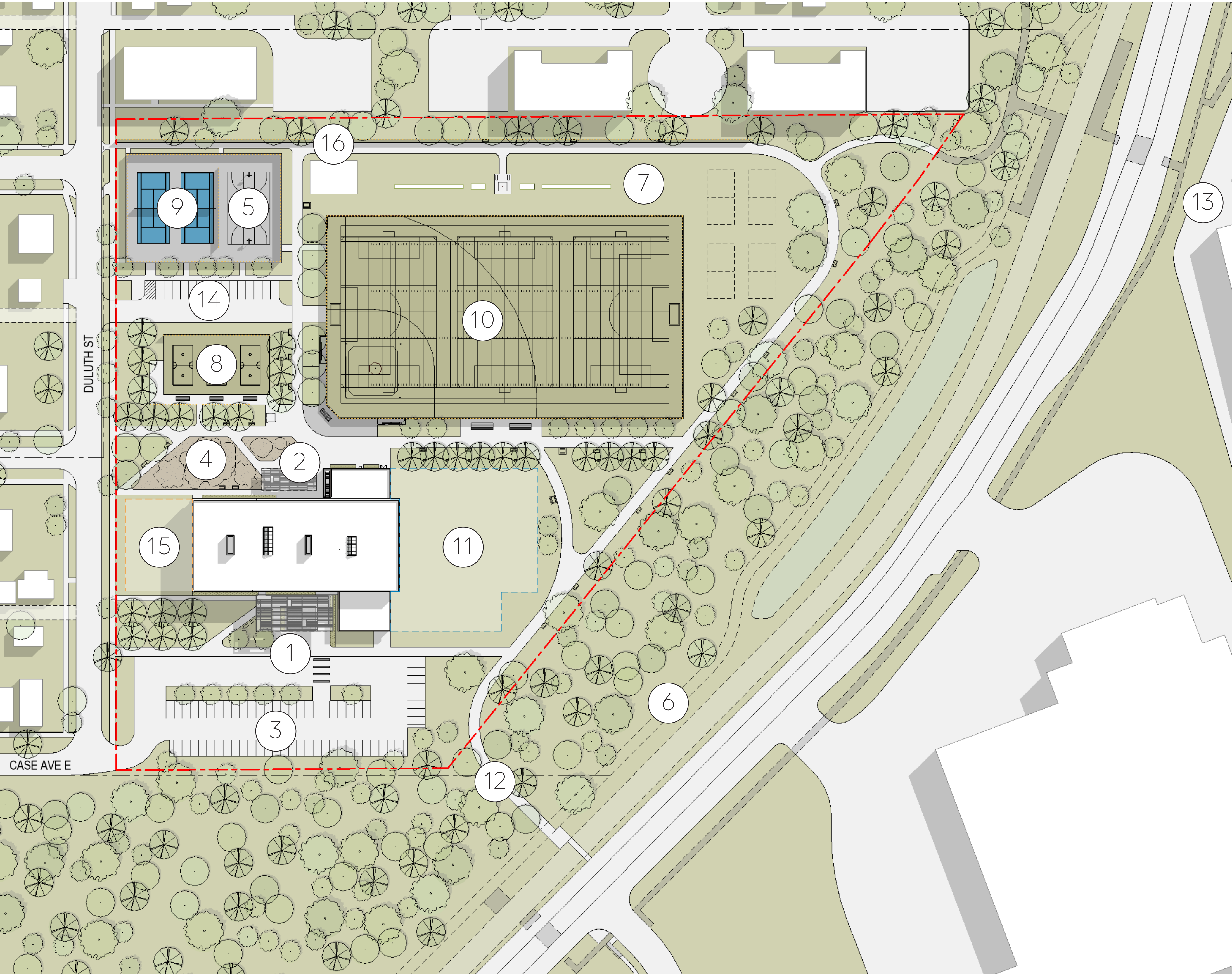
EXISTING SITE PLAN



LEGEND

- ① EXISTING REC CENTER
- ② ORCHARD/GARDEN
- ③ PARKING
- ④ OUTDOOR PLAY
- ⑤ BASEBALL/SOFTBALL FIELDS
- ⑥ BRUCE VENTO TRAIL
- ⑦ TUJ LUB COURTS
- ⑧ SEPAK TAKRAW COURTS
- ⑨ TENNIS COURTS
- ⑩ HMONG VILLAGE

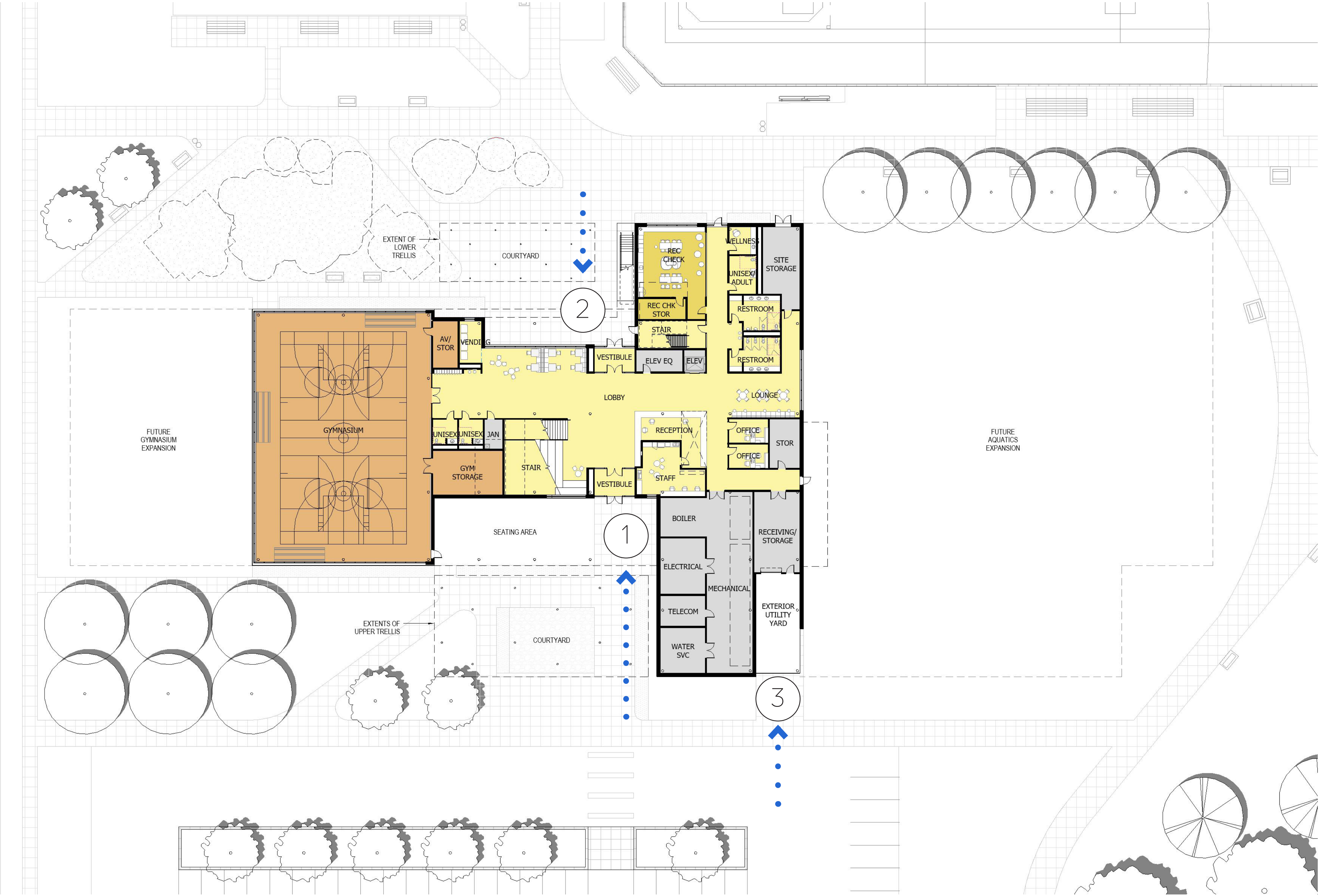
CONCEPT SITE PLAN



LEGEND

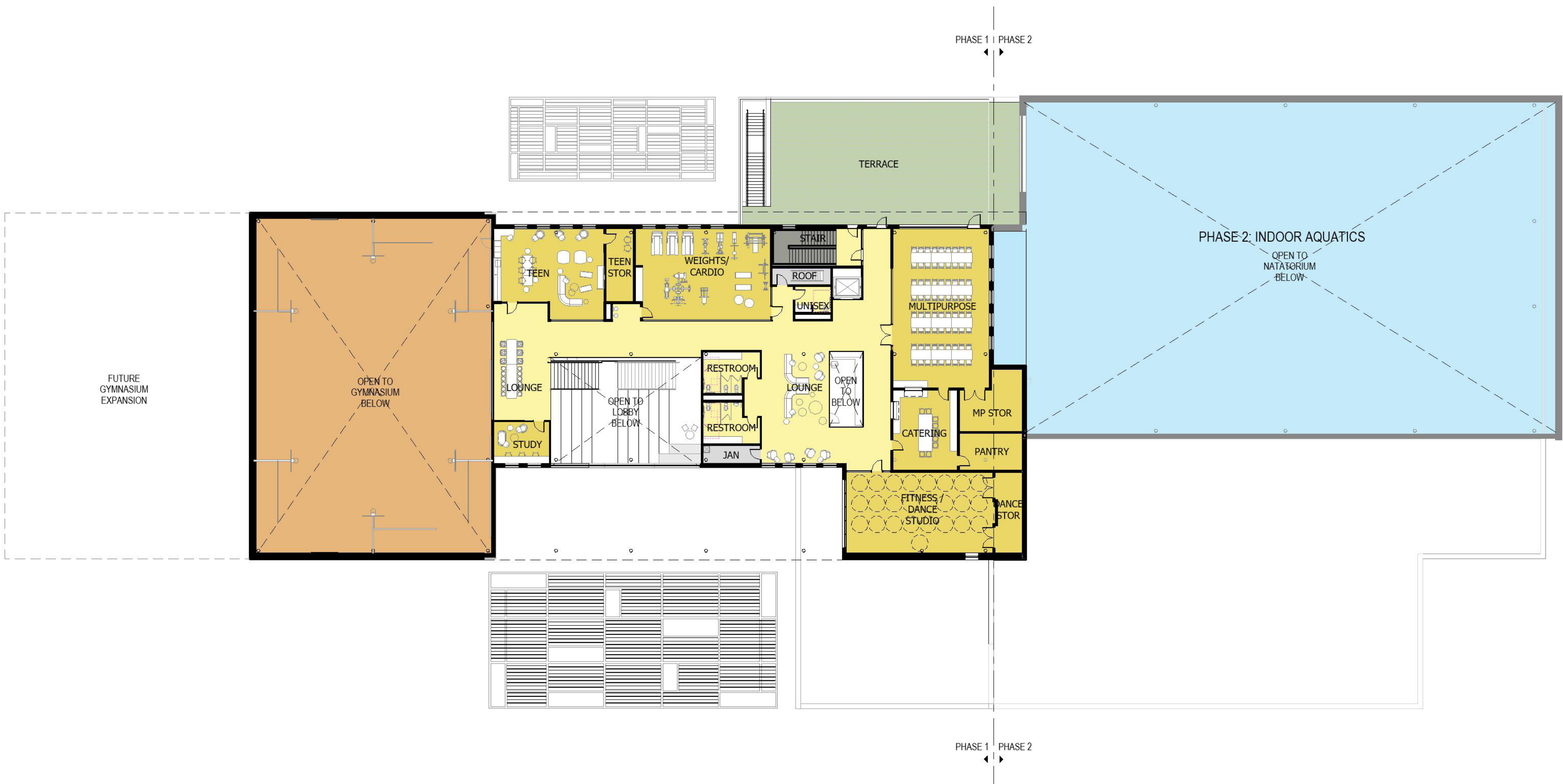
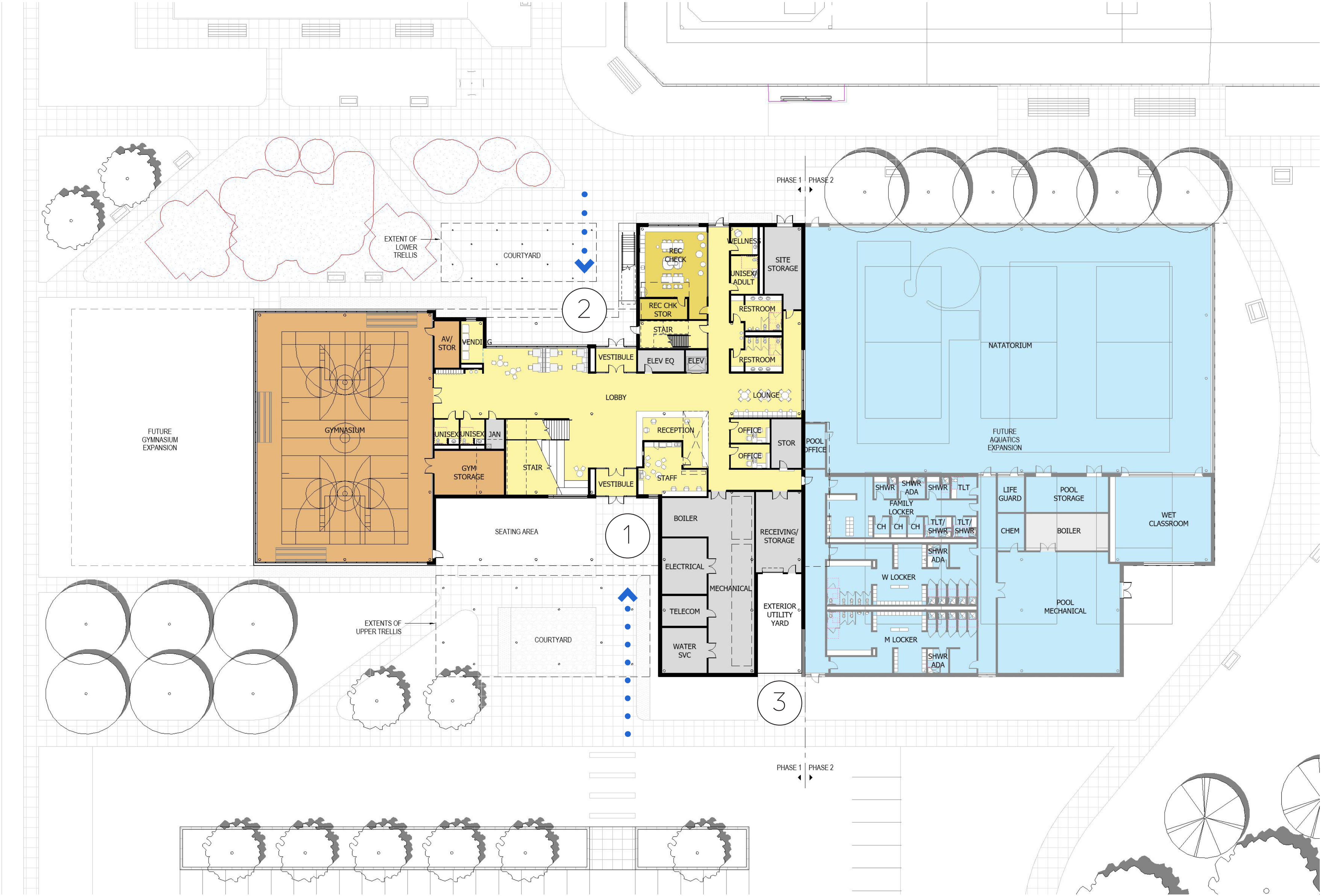
- | | |
|-----------------------------|-----------------------------|
| ① SOUTH ENTRY COURTYARD | ⑩ MULTIPURPOSE FIELD |
| ② PARK-SIDE ENTRY COURTYARD | ⑪ FUTURE AQUATICS EXPANSION |
| ③ PARKING | ⑫ FUTURE TRAIL CONNECTION |
| ④ OUTDOOR PLAY | ⑬ HMONG VILLAGE |
| ⑤ BASKETBALL COURT | ⑭ POTENTIAL PARKING |
| ⑥ BRUCE VENTO TRAIL | ⑮ POTENTIAL GYM EXPANSION |
| ⑦ TUJ LUB COURTS | ⑯ COMMUNITY GARDEN |
| ⑧ SEPAK TAKRAW COURTS | |
| ⑨ TENNIS/PICKLEBALL COURTS | |

CONCEPT FLOOR PLANS



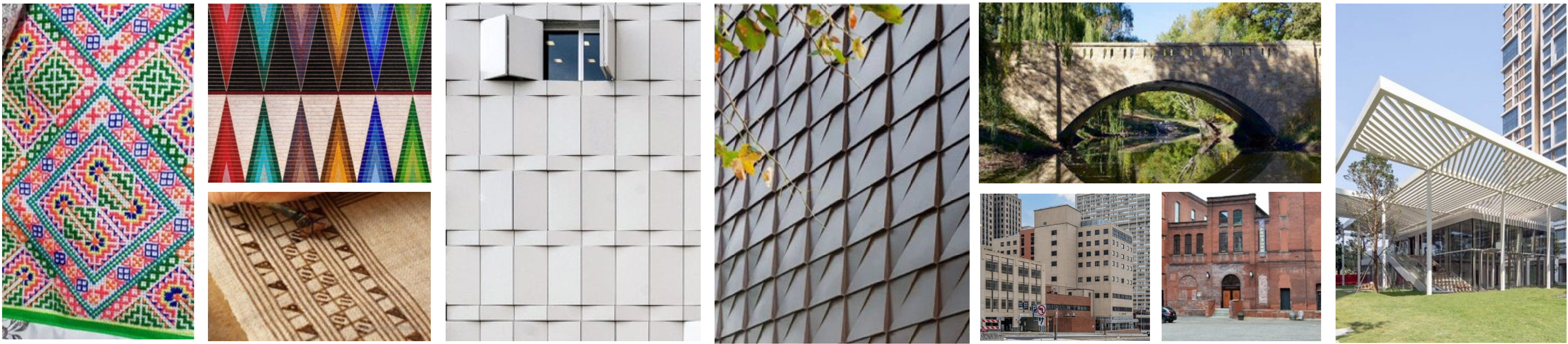
- ① SOUTH ENTRY
- ② PARK-SIDE ENTRY
- ③ SERVICE ENTRY

CONCEPT FLOOR PLANS | FULL BUILD-OUT



- ① SOUTH ENTRY
- ② PARK-SIDE ENTRY
- ③ SERVICE ENTRY

EXTERIOR CONCEPTS



INTERIOR CONCEPTS



RECEPTION



LOBBY/CIRCULATION



UPPER LOUNGE



GYMNASIUM