



SAINT PAUL
MINNESOTA



HARRIET ISLAND REGIONAL PARK

Long Range Plan



**Community Advisory Committee (CAC)
Meeting #2**

March 10, 2026



Revealing Place

This is Dakota land.

This place is currently named "Harriet Island Regional Park" within the Saint Paul Parks and Recreation and Metropolitan Council Regional Systems

Weave and reveal history within this planning process such that future changes to the landscape can elevate community voices and share stories.

Create an updated Long-range plan for 'Harriet Island Regional Park' in a way that holds space for action and accountability throughout engagement to inform this guide for future decision-making.

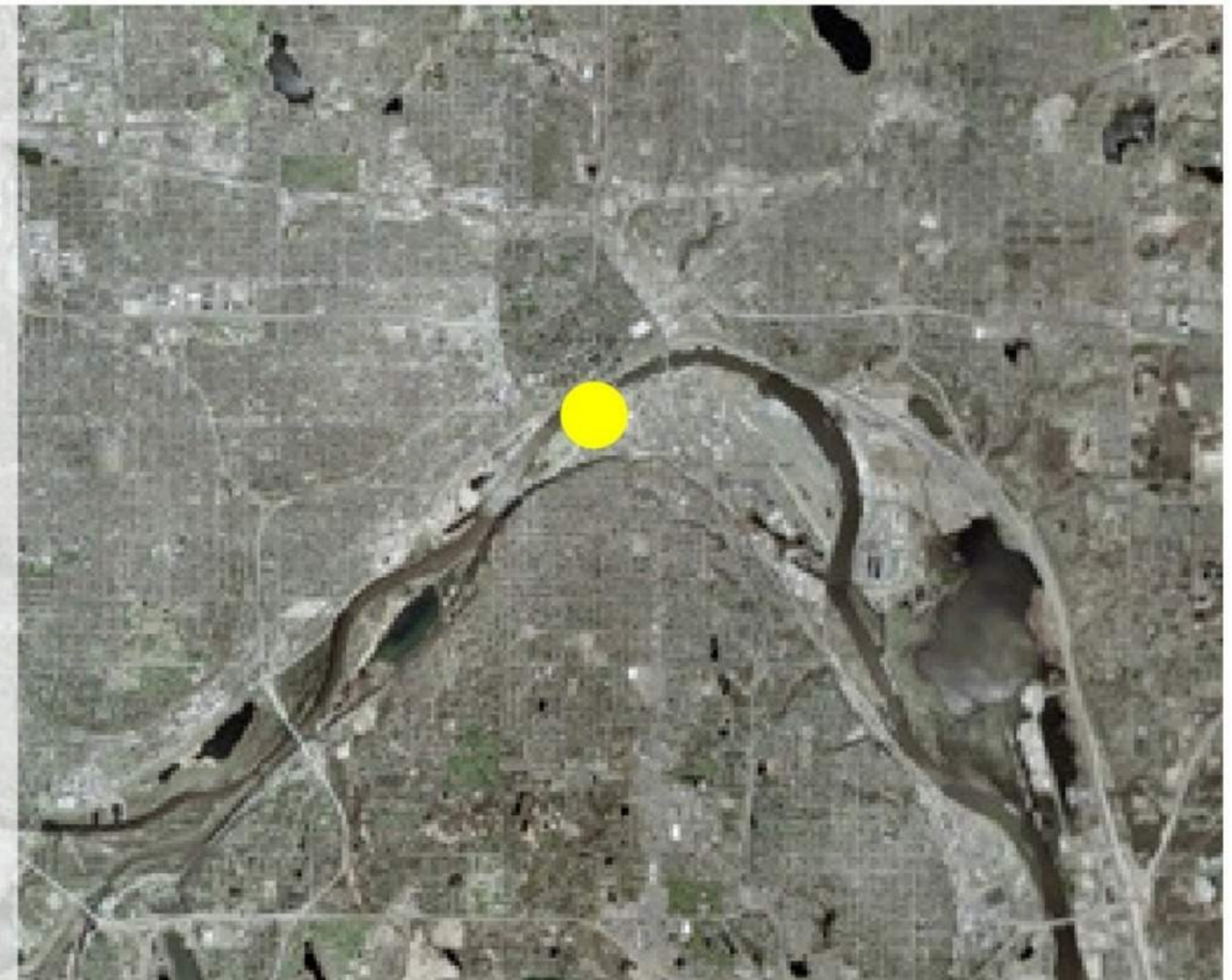
Place-name Evaluation

Focused Engagement Series

Acknowledgment

Saint Paul stands on the ancestral, traditional, and contemporary Dakóta homelands.

As we consider that the many legacies of violence, displacement, migration and settlement that has brought us to current day, we commit to understanding, respecting, supporting and advocating for Indigenous People and for this land. Let this land acknowledgment be more than a reminder. Let it be a marker in time of dedicating ourselves to be better and do better. Through this land acknowledgment, let us lead to make changes which respect history.



Revealing Place

This is Dakota land.

This place is currently named “Harriet Island Regional Park” within the Saint Paul Parks and Recreation and Metropolitan Council Regional Systems

Weave and reveal history within this planning process such that future changes to the landscape can elevate community voices and share stories.

Create an updated Long-range plan for ‘Harriet Island Regional Park’ in a way that holds space for action and accountability throughout engagement to inform this guide for future decision-making.

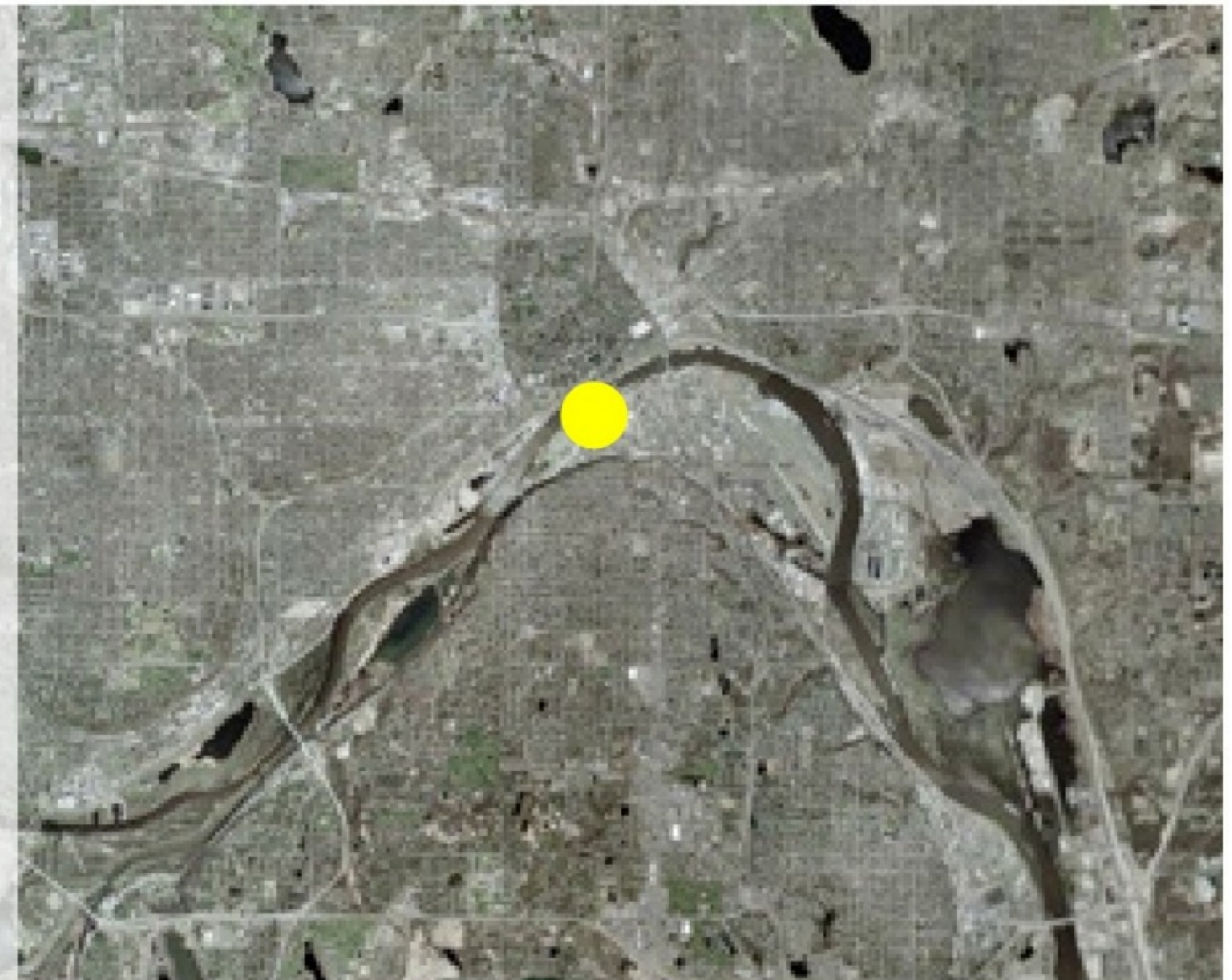
Place-name Evaluation

Focused Engagement Series

Acknowledgment

Saint Paul stands on the ancestral, traditional, and contemporary Dakóta homelands.

As we consider that the many legacies of violence, displacement, migration and settlement that has brought us to current day, we commit to understanding, respecting, supporting and advocating for Indigenous People and for this land. Let this land acknowledgment be more than a reminder. Let it be a marker in time of dedicating ourselves to be better and do better. Through this land acknowledgment, let us lead to make changes which respect history.



WELCOME!

Meeting Goals:

- Review online survey findings
- Review Draft Guiding Principles and Park Program Options





Agenda:

1. Welcome
2. Project Reminders
3. Introduction of Guiding Principles and Program Options
4. CAC Discussions
5. Group Report-out
6. Public Comment
7. Next Steps



CAC Charter

Purpose:

- Elevate the spectrum of community voices.
- Offer guidance on plan recommendations and priorities.
- Impart local knowledge relevant to the project to the planning team.
- Foster robust, respectful, and transparent dialogue.
- Balance priorities within a draft plan as its developed.

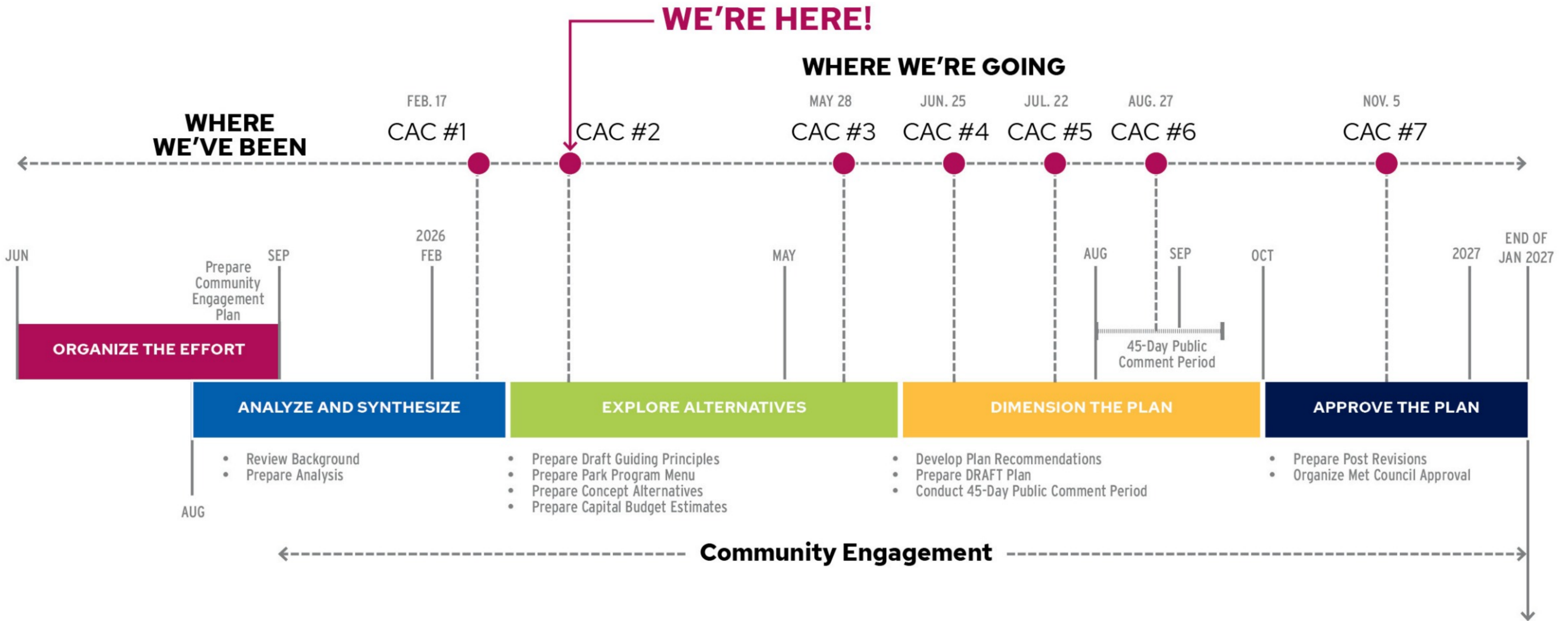
Responsibilities:

- Attend regular meetings as scheduled.
- Review materials and bring informed feedback.
- Serve as liaisons to their networks and constituencies.

Activities:

- Provide input on assessments of park conditions, usage patterns, and community interests.
- Participate in defining project guiding principles.
- Help vet and refine draft concepts for park improvements, amenities, and programs.
- Review and provide feedback on a draft plan document.

Project Schedule

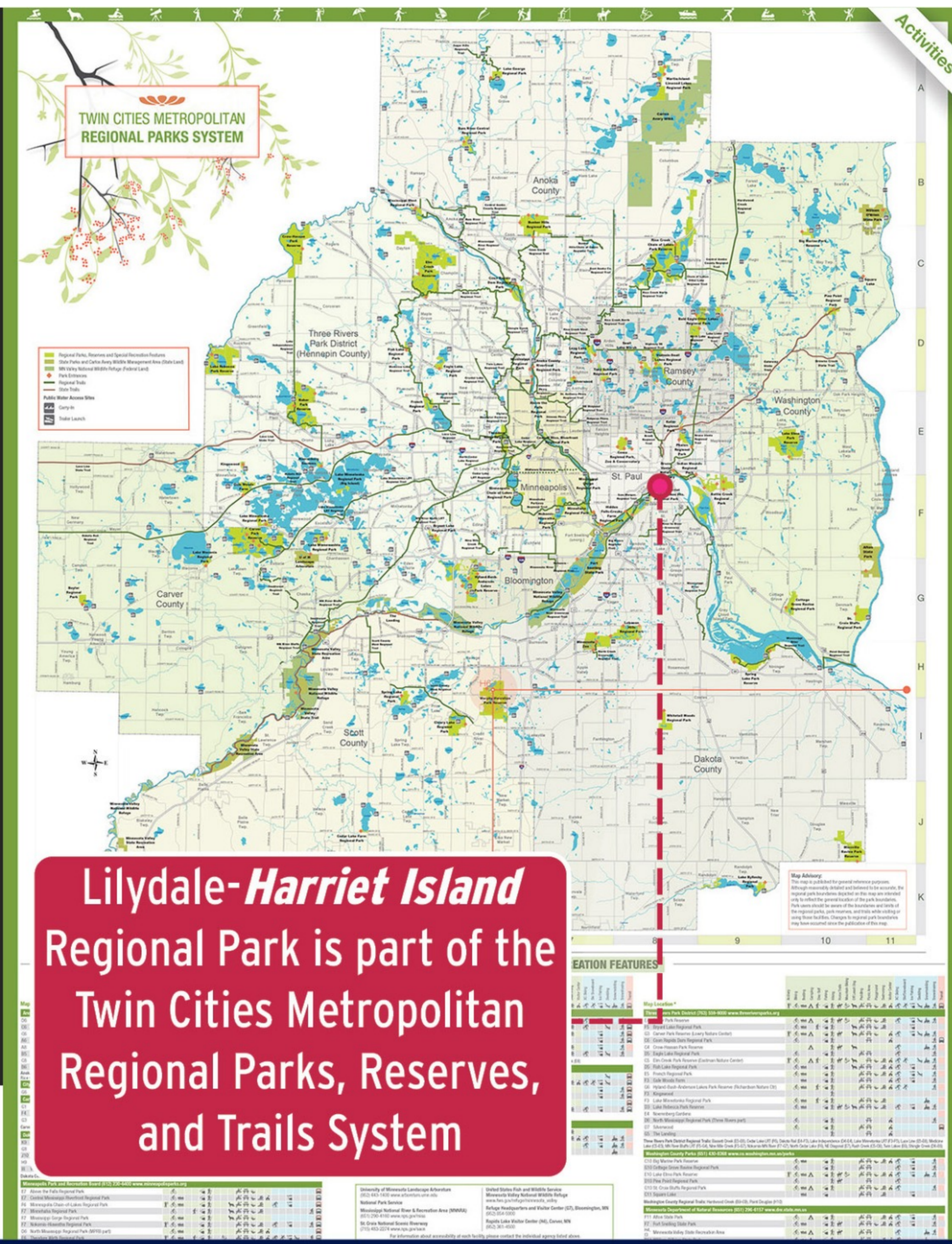


FUTURE | Beyond the Plan
 If approved, parts of the plan will be developed over the next 20-30 years as funding becomes available that aligns with project priorities.

Long Range Plan Purpose

- The Met Council is charged under state law with overseeing the acquisition and development of the regional parks system. Met Council also contributes and administers funding to the regional park implementing agencies.
- Each regional park implementing agency is required to develop a long-range plan in alignment with Met Council's Regional Parks and Trails Policy Plan.
- Long-range plans are critical in defining the specifics of acquisition, development, and operation of regional facilities.

<https://imagine2050.metrocouncil.org/read-the-plans/regional-parks-and-trails/planning/>



Online Survey input (From October to date)

Sustainability and Resilience

How the river meets the city is so important. This was once a dynamic and natural site. I would love to see this big open field feel more connected to the river and to soften the harsh waterfront infrastructure

I'd like to feel confident sustainability was being ensured

Access and Safety

Scooters and e-bikes are dangerous to pedestrians and riders. Speeds should be regulated lower and helmets mandatory

Arriving from the East (Wabasha Street) it feels almost like I'm going through a private apartment complex to arrive at the park

Park Amenities

Natural flora to walk around

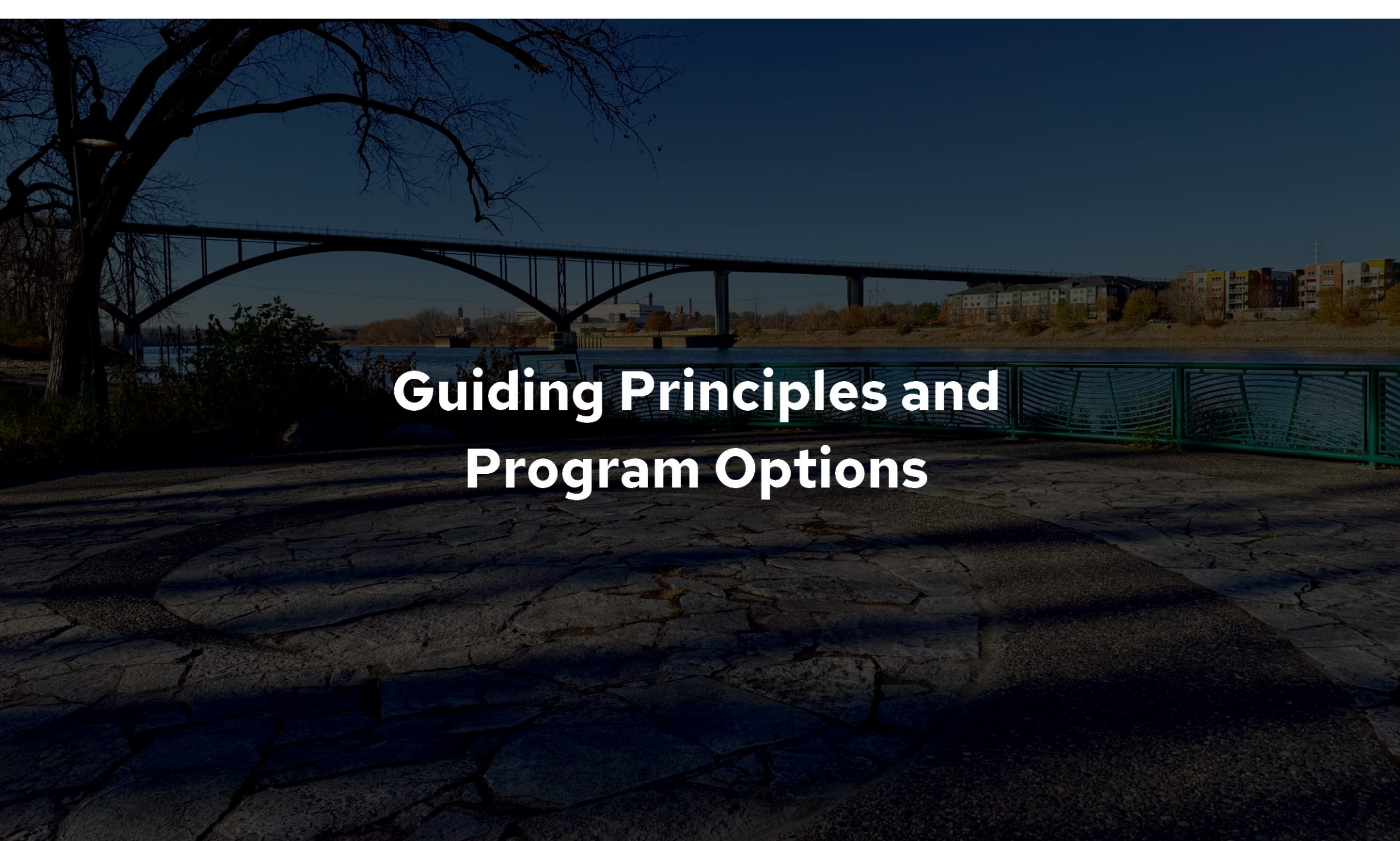
Concessionaires such as seasonal restaurants, food carts along the river, pop-up snack bars, a place to grab a beer and sit along the river

186
Contributions
(total number of responses or feedback collected)

History and Cultural Significance

I wish there was more information at the park. Maybe an interactive mini trail or something

I'd like to emphasize the Dakota connection to the land



Guiding Principles and Program Options

Community Values

This word cloud visually represents weighted values across engagement themes.



- River & Water Connection
- Community & Gathering
- Accessibility & Inclusion
- Nature, Habitat & Stewardship
- Cultural History & Identity
- Active Use & Recreation
- Destination & Economic Vitality
- Safety & Maintenance

Guiding Principles

A translation of community values



The River Above All

Celebrate the Mississippi River as the park's defining feature by prioritizing physical, visual, and experiential connections to the water.



A Park for Everyone

Ensure universal accessibility, safety, equitable access, and inclusive design across all improvements.



Nature as Infrastructure

Restore and protect natural systems as both ecological and experiential assets.



A Cultural & Civic Stage

Position Harriet Island as Saint Paul's riverfront gathering place for art, music, and multicultural expression.



Everyday Destination

Enhance daily use, not just event days through comfort, amenities, and active programming.



Park Program

Park Program: Resilient Environments & Habitat Spaces



Sub-surface Infiltration Systems

Include subsurface storage to manage runoff from additional adjacent impervious surfaces (not illustrated here).



Enhanced Birding Opportunities



Stormwater Management/Flooding adaptation



Naturalized Landscape

Image credit: Trust for Public Land



Pollinator Habitat



**Best Management Practices
Stormwater**



Habitat Identification



Diverse Habitats

Park Program: Land Based Recreation



Regional Play/Adventure Destination



Neighborhood Play Destination



200' x 85'

Winter recreation: Skating + Hockey



Regional Destination/Pier Park



10' x 10'

Passive recreation: Games



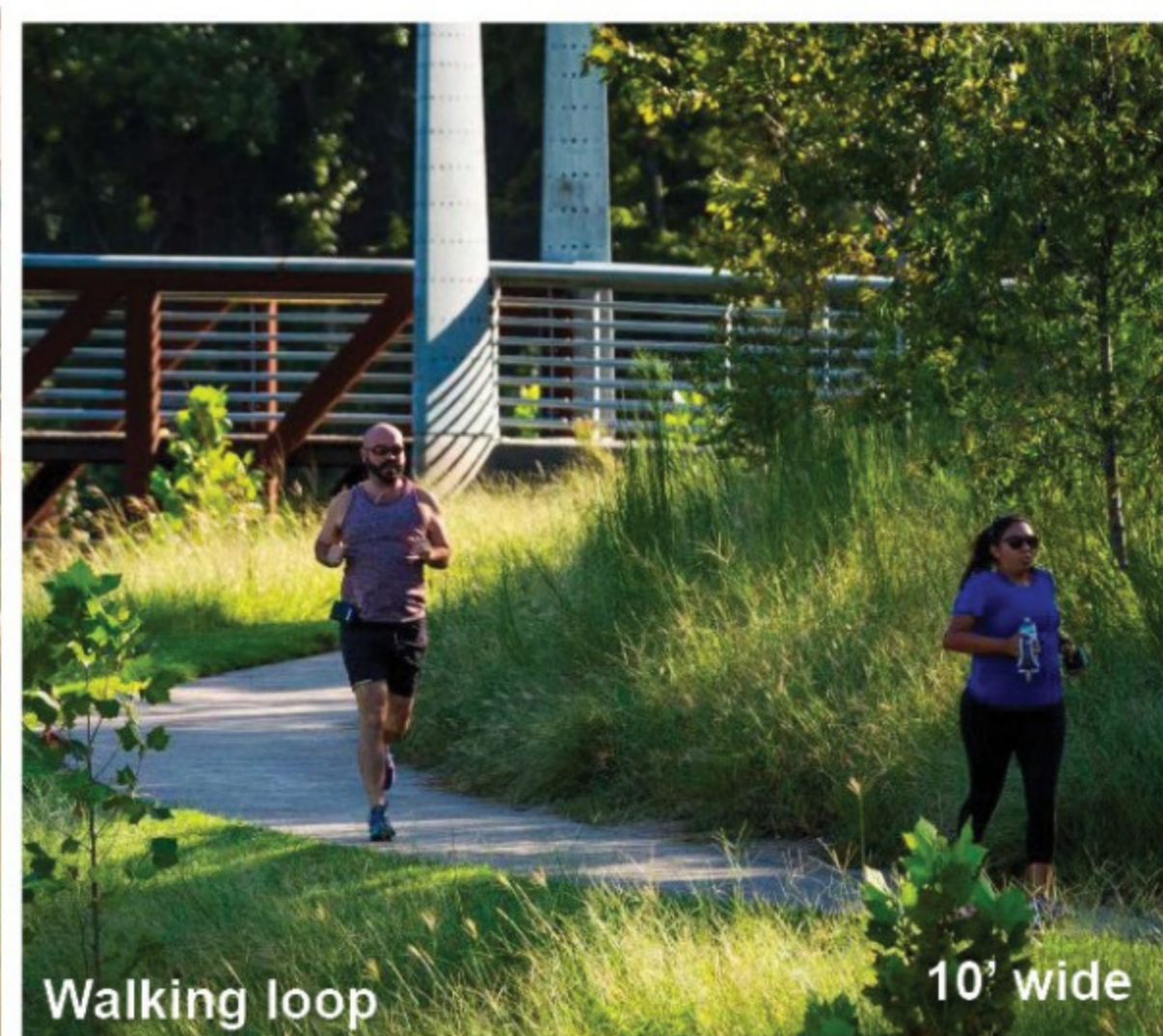
River walk

10' wide



Bike Trail

10' wide



Walking loop

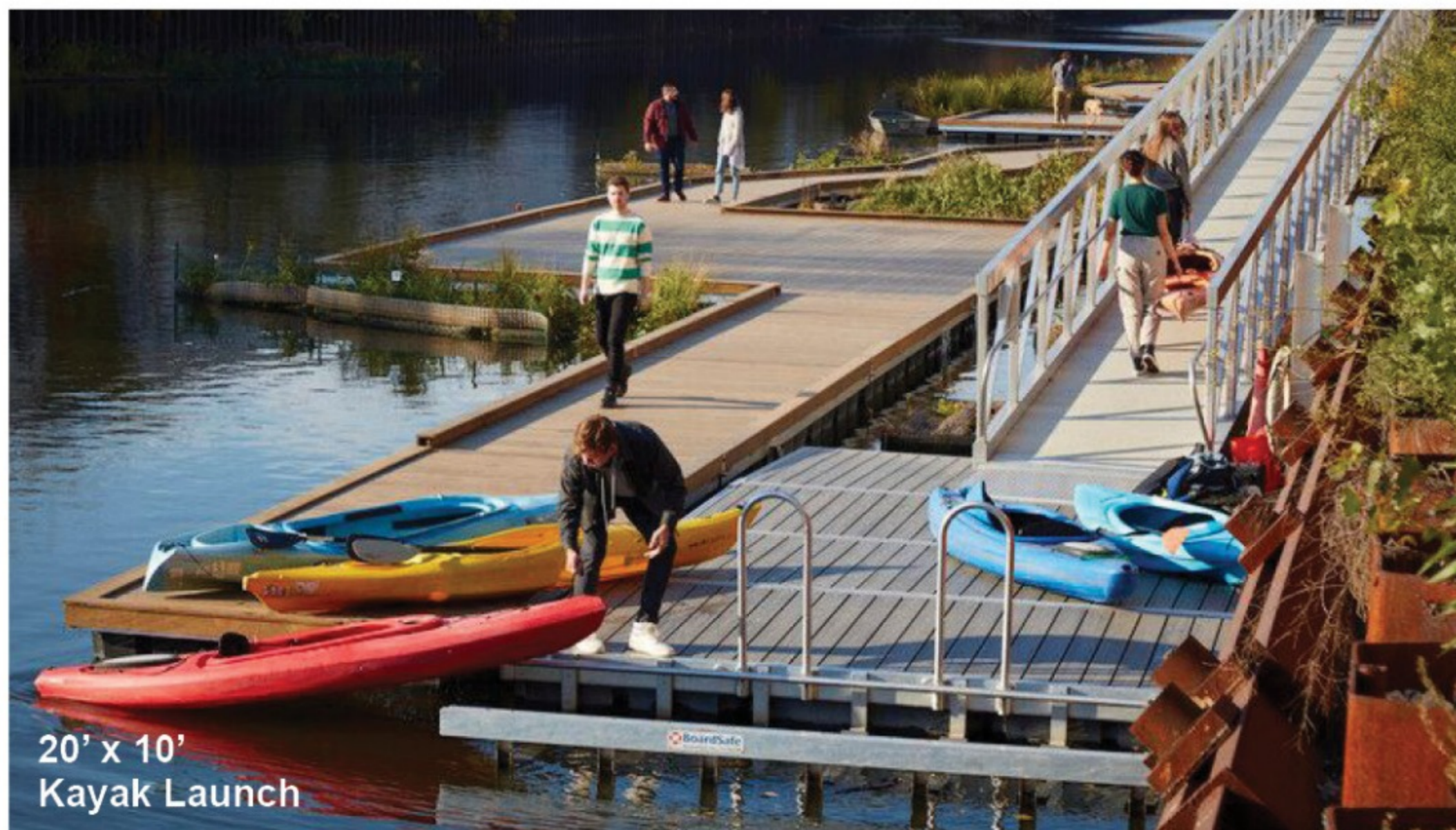
10' wide



20' x 80'

Passive Recreation: Hammock Grove

Park Program: Water Based Recreation



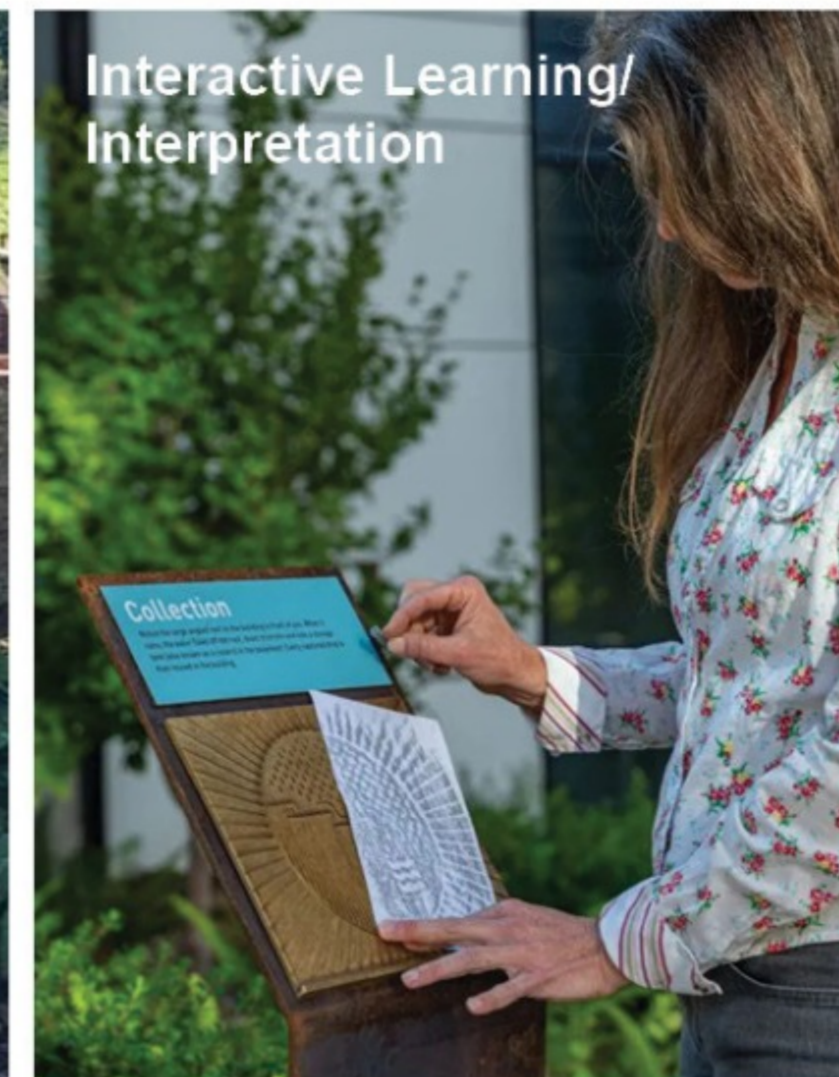
Park Program: Interpretation and Wayfinding

Park Branding: Unique Signage Identity/Set Park Standard and Recognition



Branded signage (signage family):

- Monument sign
- Information kiosk
- directional signage
- trail markers



Park Program: Park Facilities



Park Pavilion
140' x 60'



Visitor Parking
180' x 60'
20 spots



Existing Restrooms
60' x 40'



Expanded Restrooms



Picnic Shelters
30' x 40'

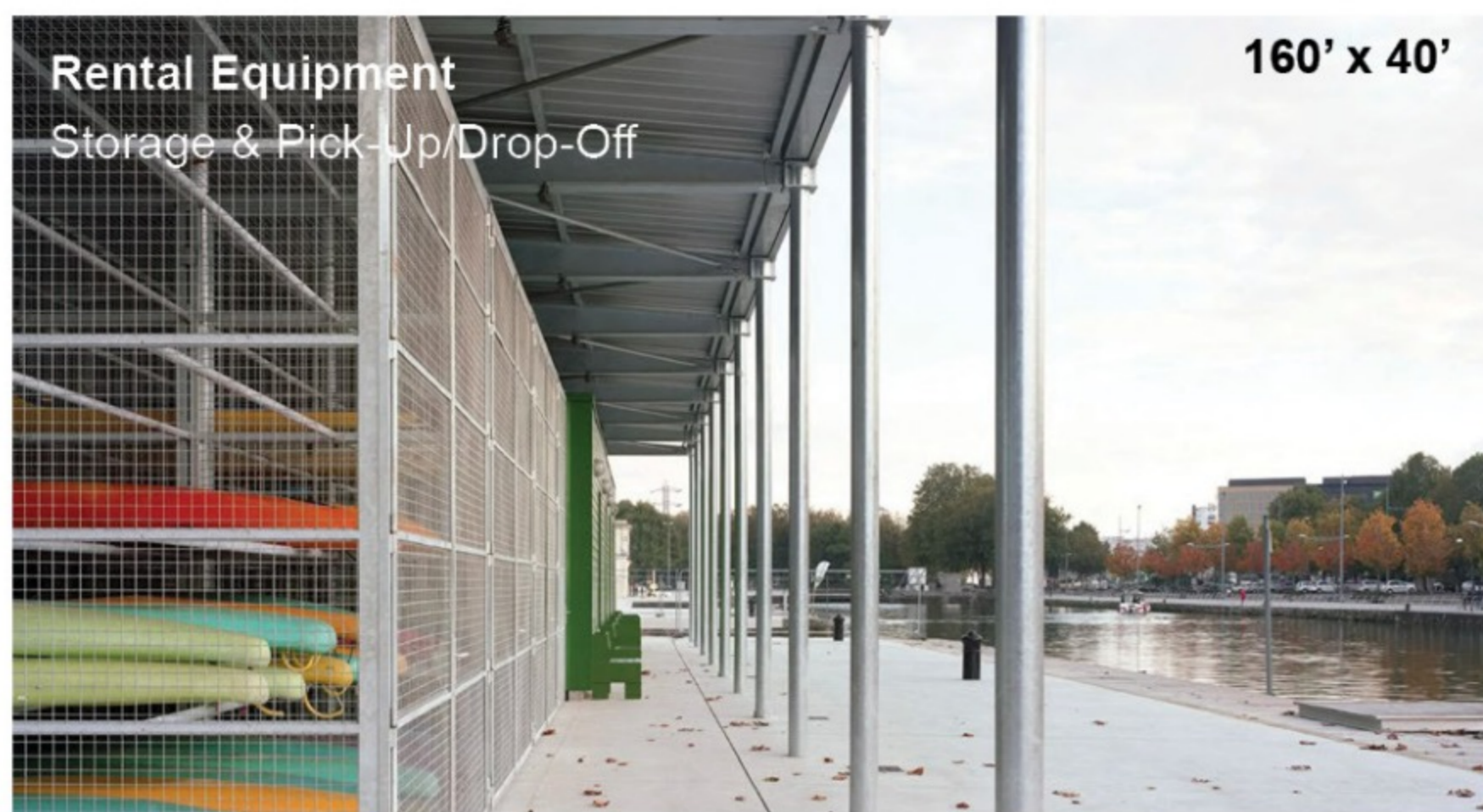


Restaurant
Anchor Food Concession

150' x 60'



Bike Corral
40' x 18'



Rental Equipment
Storage & Pick-Up/Drop-Off

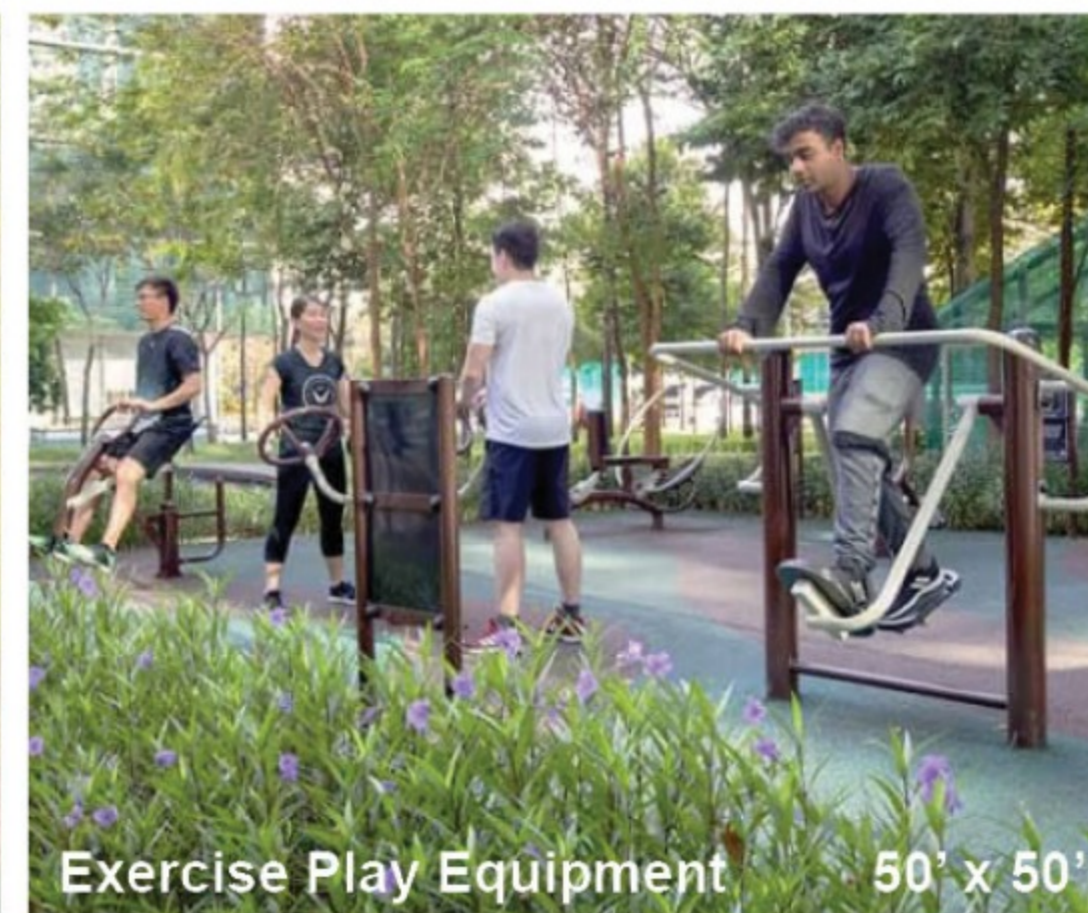
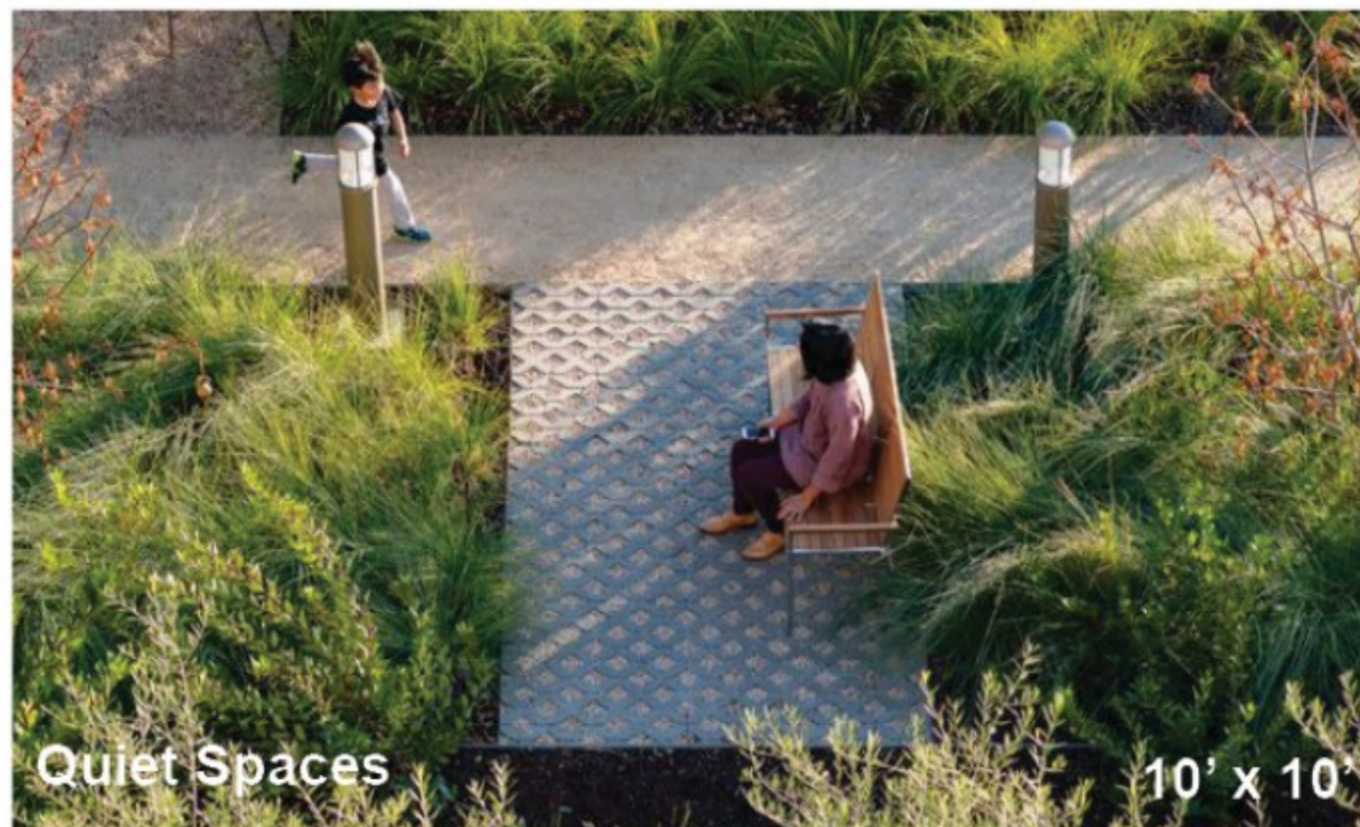
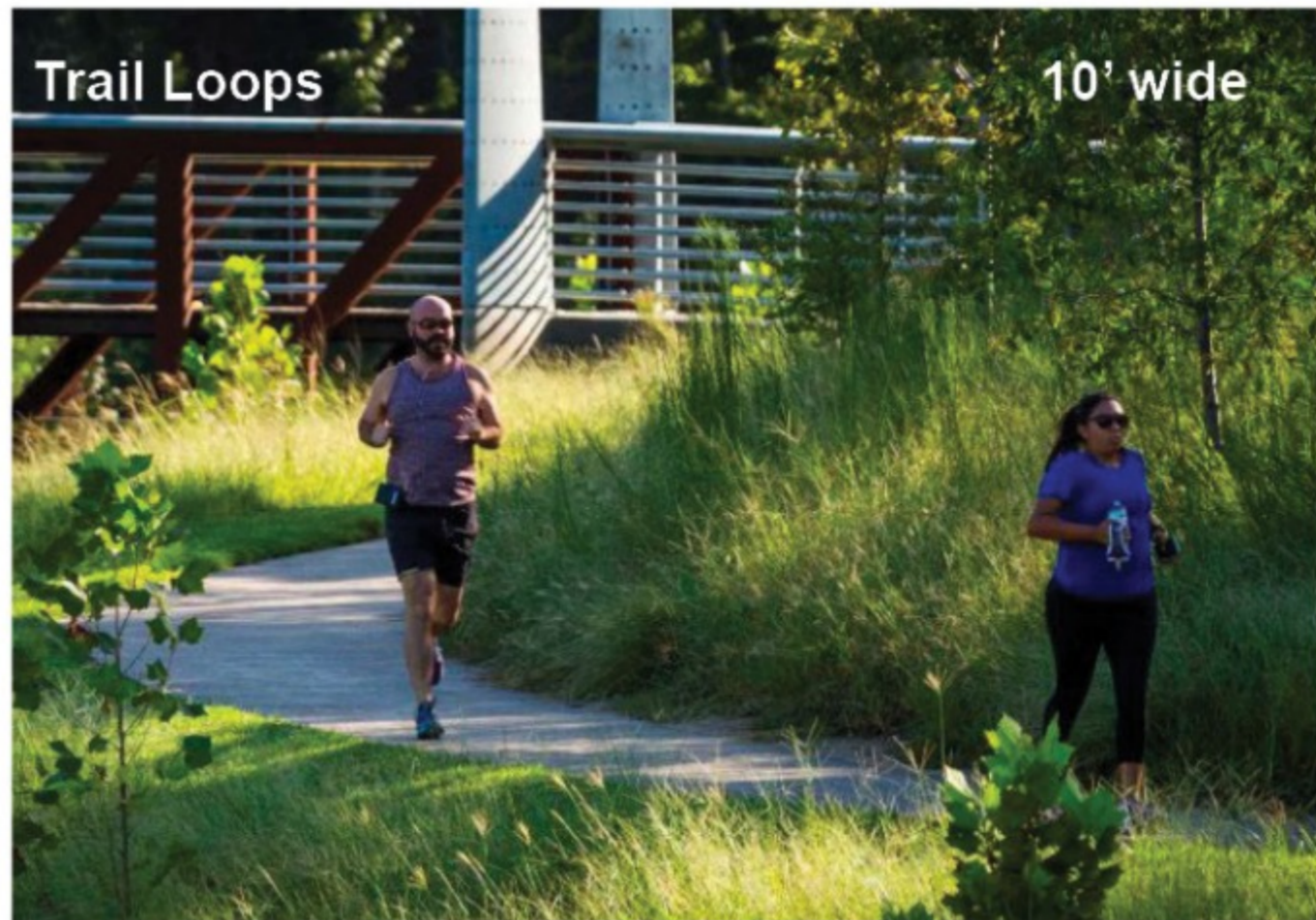
160' x 40'



120' x 80'

Maintenance Facility

Park Program: Wellbeing



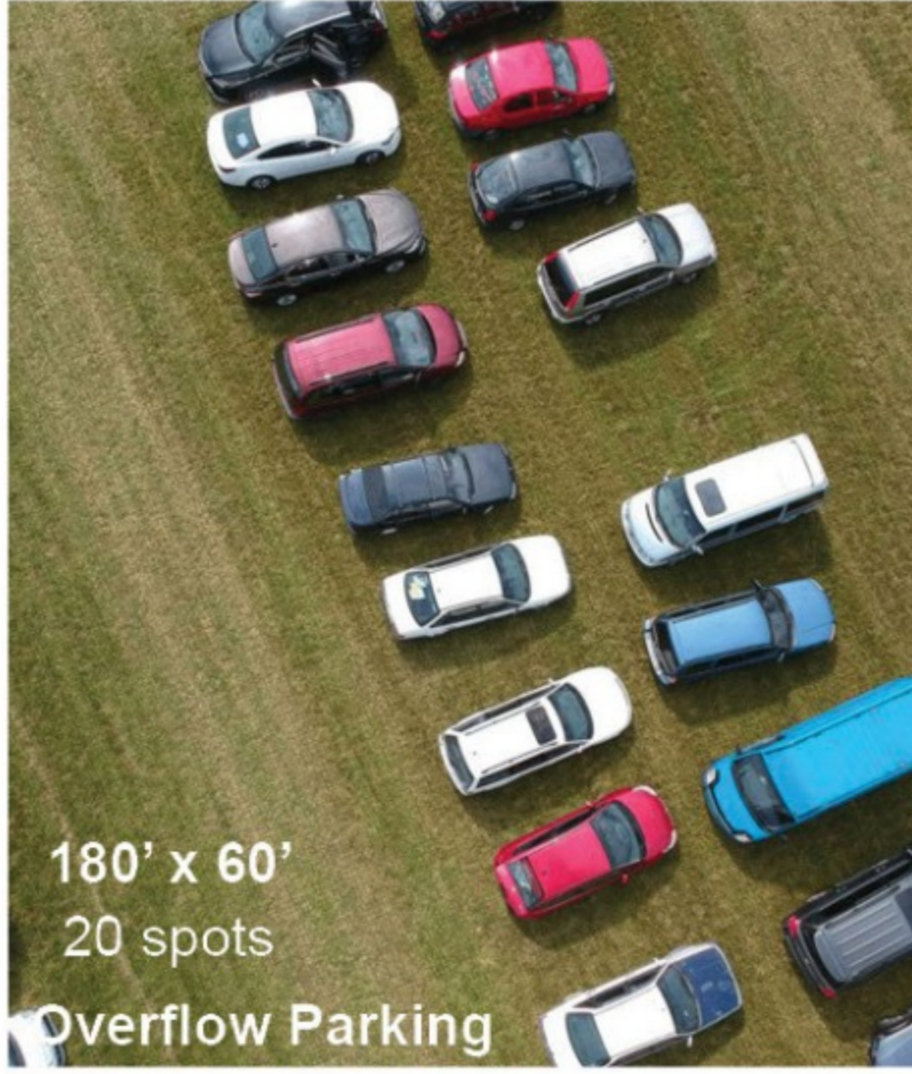
Park Program: Event Facilities



Amphitheater Space 140' x 60'



Food Truck Court
40' x 20'
1 Food Truck Spot



180' x 60'
20 spots
Overflow Parking



Pop-Up Tents
75' x 30'
8 Tents



Performance Stage Target Stage
75' x 75'



Performance Lawn
Engineered Turf
370' x 275'



Event Shuttle Service



Boat Shows / Entertainment

Park Program: Cultural Spaces



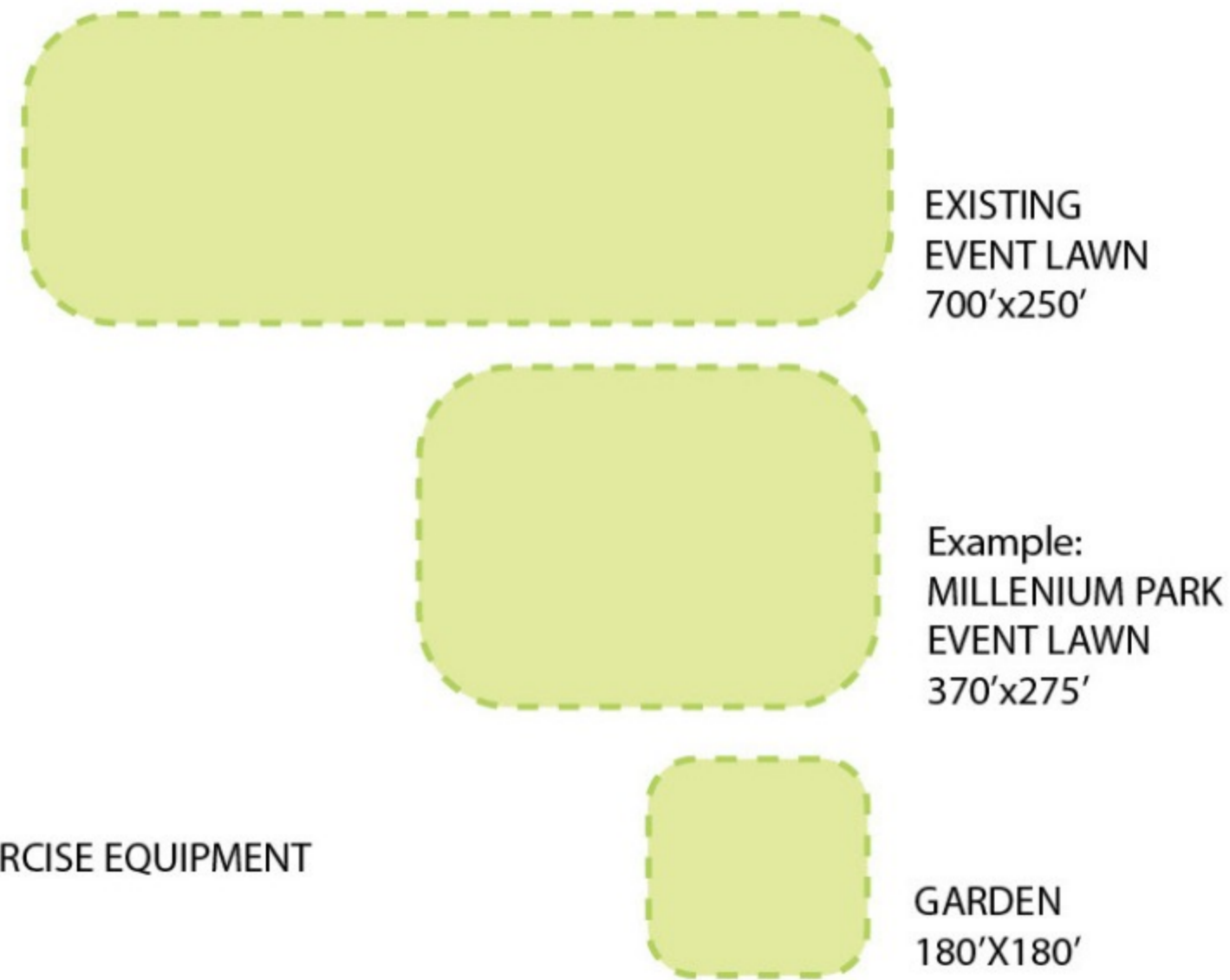
Park Program: Spatial Reference

Facilities

-  PARKING (20)
180'x60'
-  STAGE
75'x75'
-  TRUCK
40'x20'
-  BATHROOM
60'x40'
-  STORAGE
160'x40'
-  RESTAURANT
150'x60'
-  MARINA DINING
120'x50'
-  PAVILLION
150'x60'
-  MUSEUM
150'x150'
-  EVENT TENTS
75'x30'
-  AMPHITHEATER
140'x70'

Recreation

-  TRAILS 10'w
-  GAMES, QUIET SPACES 10'x10'
-  OVERLOOK 20'x20'
-  KAYAK LAUNCH 20'x10'
-  BIKE 40'x18
-  YOGA
30'x30'
-  WATER PLAY
60'x60'
-  HOCKEY
200'x85'
-  1/2 BASKETBALL, OUTDOOR EXERCISE EQUIPMENT
50'x50'
-  PLAY
200'x120'



Water Recreation



CAC Discussions

PADELFORD LANDING

Exercise #1 - Guiding Principles Critique

Group: X

Name XX

Name XX

Name XX

Name XX

Name XX

INSTRUCTIONS:

Discuss with your group thoughts on/critique of the Guiding Principles. You may use the space below to write down your discussion points:

What works? What's missing? What should be improved?

One person from your group will share with the other CAC groups a highlight summary of your group discussion

Community Values

River & Water Connection

- Direct river access
- Riverwalk improvements
- Boating & fishing
- Touching the water
- Views & sunset experiences

Community & Gathering

- Festivals and live music
- Movies and public events
- Family gathering space
- Multicultural celebrations
- Spaces that bring people together

Accessibility & Inclusion

- ADA access across all improvements
- Restroom accessibility
- Transit and bike connections
- Universal design in plantings and seating
- “Everyone deserves to use the park”

Nature, Habitat & Stewardship

- Native plantings
- Habitat restoration
- Shade trees & canopy
- Environmental sustainability
- Flood resilience
- Clean water

Cultural History & Identity

- Honoring Dakota history
- Indigenous acknowledgment
- Multicultural storytelling
- Public art
- Interpretive signage

Active Use & Recreation

- Playgrounds (including older youth equipment)
- Trails for walking and biking
- Exercise equipment
- Year-round programming

Destination & Economic Vitality

- Restaurant / café as anchor
- Pavilion activation
- Revenue generation
- Partnership opportunities
- Strengthening downtown connection

Safety & Maintenance

- Lighting
- Perceived safety
- Restroom availability
- Riverwalk repairs
- Trash management

Guiding Principles

A translation of community values



The River Above All

Celebrate the Mississippi River as the park's defining feature by prioritizing physical, visual, and experiential connections to the water.

Intent

- Improve and repair the riverwalk
- Expand water-touch opportunities
- Reinforce boating, fishing, and passive river engagement
- Provide shade and comfort along the river edge



A Park for Everyone

Ensure universal accessibility, safety, equitable access, and inclusive design across all improvements.

Intent

- Embed accessibility in every investment
- Improve restrooms and year-round access
- Strengthen transit, pedestrian, and bike connectivity
- Design for all ages and abilities



Nature as Infrastructure

Restore and protect natural systems as both ecological and experiential assets.

Intent

- Expand native plantings and habitat restoration
- Increase tree canopy and shade
- Design for flood resilience
- Improve environmental stewardship and interpretation



A Cultural & Civic Stage

Position Harriet Island as Saint Paul's riverfront gathering place for art, music, and multicultural expression.

Intent

- Support festivals while balancing neighborhood impacts
- Expand opportunities for local artists
- Integrate public art and cultural storytelling
- Explore destination anchors (e.g., café/restaurant model)

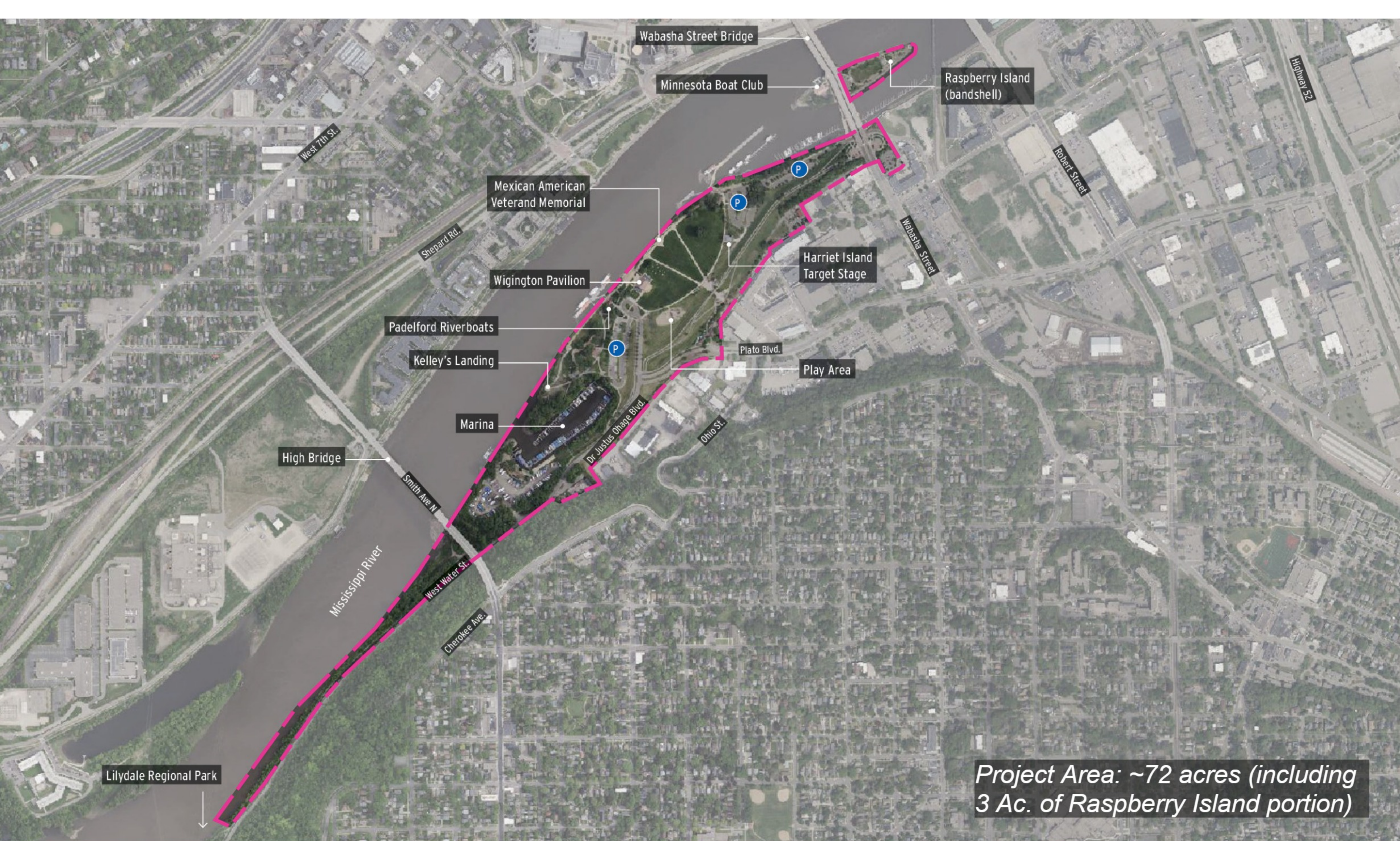


Everyday Destination

Enhance daily use, not just event days through comfort, amenities, and active programming.

Intent

- Improve trails and seating
- Expand play for multiple age groups
- Introduce fitness and informal recreation
- Extend year-round activation



Project Area: ~72 acres (including 3 Ac. of Raspberry Island portion)

Group Share

Harriet Island Regional Park

Public Comment

PADELFORD LANDING

Next Steps:

1. CAC homework (provide further guiding principles and program options feedback, visit website, storymap, take online survey, share project activities and events)
2. Next CAC meeting (#3): May, 28th, 4:30-6:00pm, Wigington Pavilion/
Virtual (Hybrid)

- **Purpose: Draft of Concept Alternatives**

THANK YOU!