

Conway Park Play Area Improvements

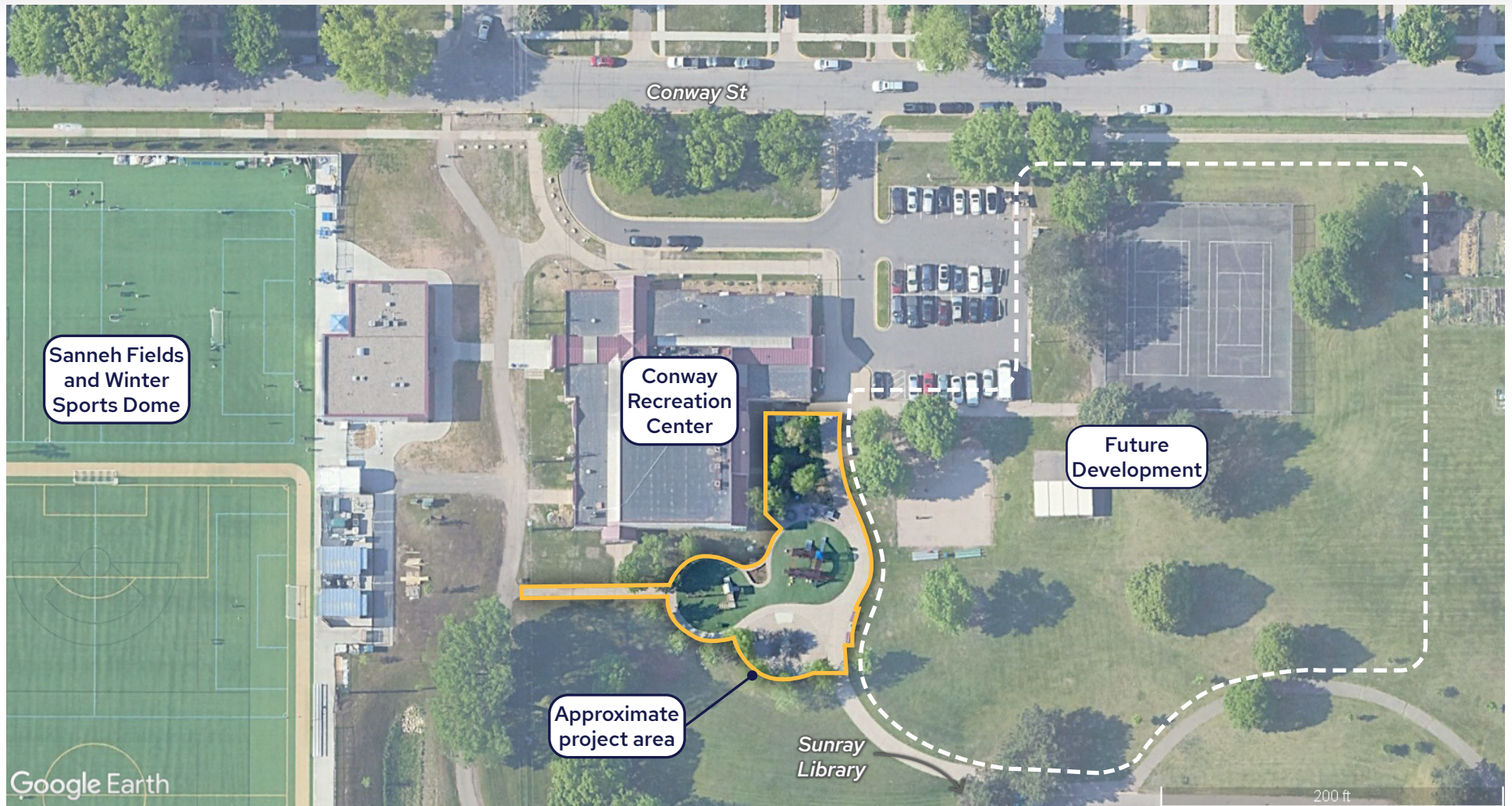
**Southeast Community Organization
Land-Use Committee**

December 1, 2025



**SAINT PAUL
MINNESOTA**

Project Context



Project Overview

IMPROVEMENTS INCLUDE:

- Removal and replacement of play equipment and play area surfacing
- New site furnishings
- Landscaping
- Public Art

PROJECT FUNDING:

- \$650,000
- Community Development Block Grant (federal) funding

TENTATIVE SCHEDULE



Community Engagement | *Proposed Activities*

November/December 2025 *Project introduction; initial ideas*

- Meet with Southeast Community Organization
- Meet with Sanneh staff
- Send postcards to community members near Conway
- Post online survey

January/February 2026 *Concept development*

- Meet with kids at Conway after-school program
- Attend other events hosted at the Community Center
- SECO events in new year?

April 2026 *Concept refinement*

- Meet with SECO (board, land-use, and/or full community)
- Follow up with kids at after school program
- Online survey

June 2026 *Design confirmation*

- Meet with SECO and Sanneh to confirm final design; summarize engagement to date and tentative construction schedule
- Website update with final play area design

Ongoing Engagement:

- **Project website:** Project updates, links to survey, and project documents will be posted on the project website through design and construction
- **Project surveys:** Surveys will be available throughout the project to share thoughts and ideas about the Park, and eventually to share feedback on concept(s) and play equipment.
- **Direct correspondence:** Reach out to project manager Katie Hamerlinck (katie.hamerlinck@ci.stpaul.mn.us, 651-266-6414).

Next Steps:

- **Share survey with SECO (and on project website)**
- **Meet with after-school program at Conway**
- **Continue community engagement and begin conceptual design**

Questions or comments?

Katie Hamerlinck, Project Manager
katie.hamerlinck@ci.stpaul.mn.us
651-266-6414

www.stpaul.gov/play-area-projects



SAINT PAUL
MINNESOTA