



Capitol Region Watershed District

4-1-2026

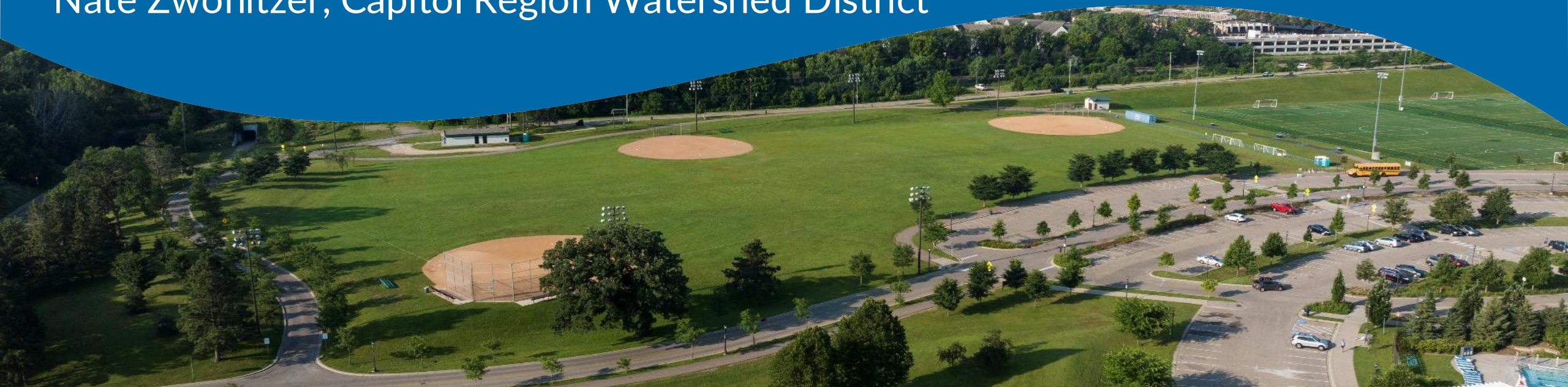


McMurray Fields Update

Alice Messer, Saint Paul Parks and Recreation

David Ronzani, Saint Paul Parks and Recreation

Nate Zwonitzer, Capitol Region Watershed District





Capitol Region Watershed District



McMurray Fields Project Update

1 Background

2 Park Design

3 Stormwater Design

4 Budget

5 Project Timeline

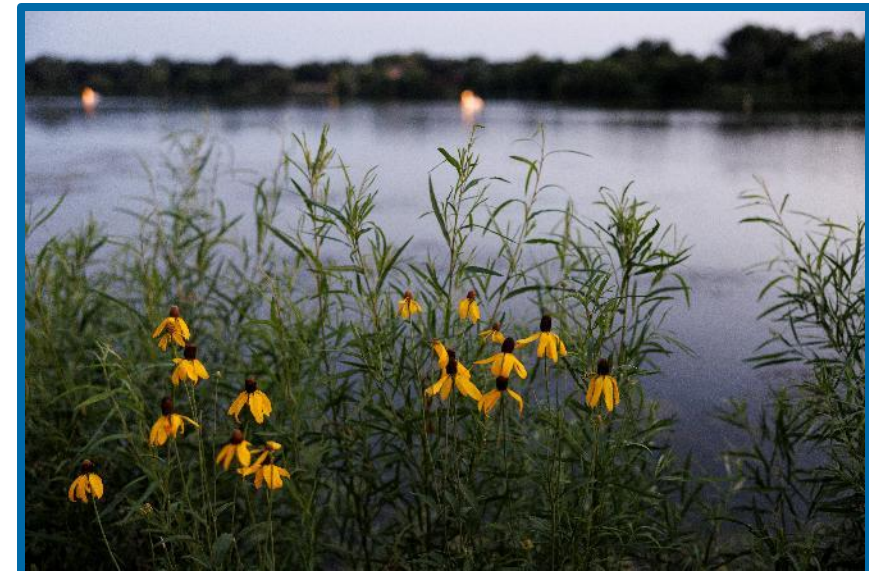
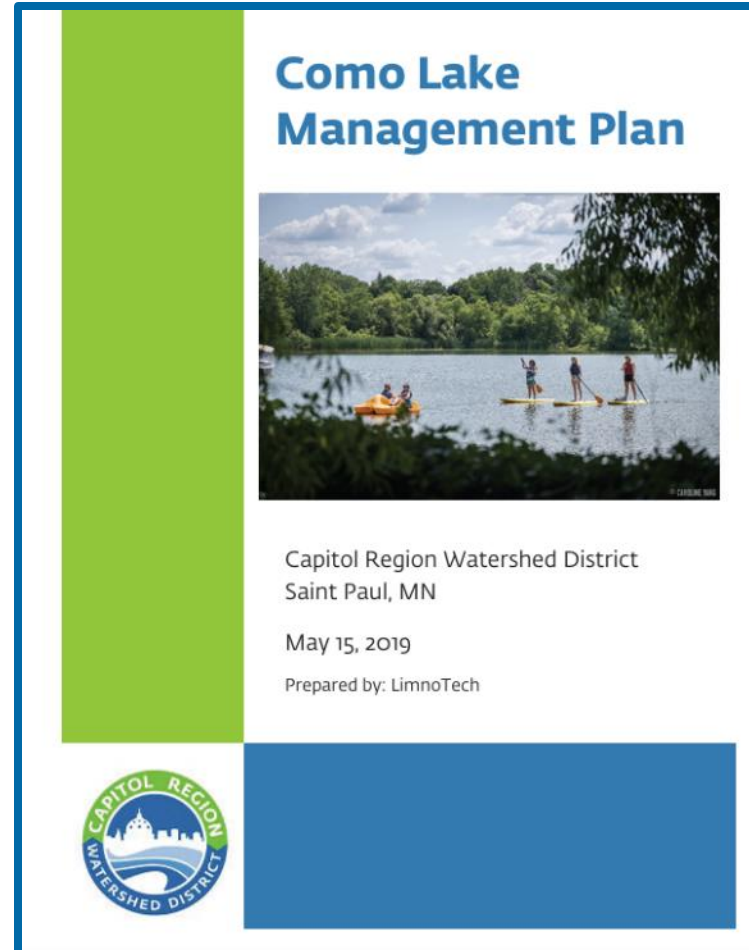
6 Questions



Como Lake Management Plan

Background

- History of improvements to Como Lake
- Many projects completed so far
- McMurray one of the remaining opportunities
- Working together since 2015
- Significant programming demands at McMurray
- One of the primary municipal athletic sites in Saint Paul





Park Design

- 5-acre artificial turf field
- Additional parking
- Restroom/storage building





Park Design

Artificial Turf Field

The artificial turf field project includes 5 acres of new multi-use artificial turf fields that will be built in place of (3) natural grass softball fields.

The artificial turf surface will include lines for:

- (2) HS Soccer Fields,
- (3) 9x9 Soccer Fields,
- (3) 6x6 Soccer Fields,
- (2) Baseball/Softball Fields compatible from age group to adult softball leagues (315' outfields),

And the potential for:

- Lacrosse Field, and
- 100 yd Football Field





Park Design

Restroom/Storage Facility

- 924 SF
- 2 Unisex toilet Rooms
- Garage space Field Equipment
- Utility Room
- Office for Parks Staff
- Shaded Overhang for picnic tables
- Will be included an alternate bid item, if funding is available.

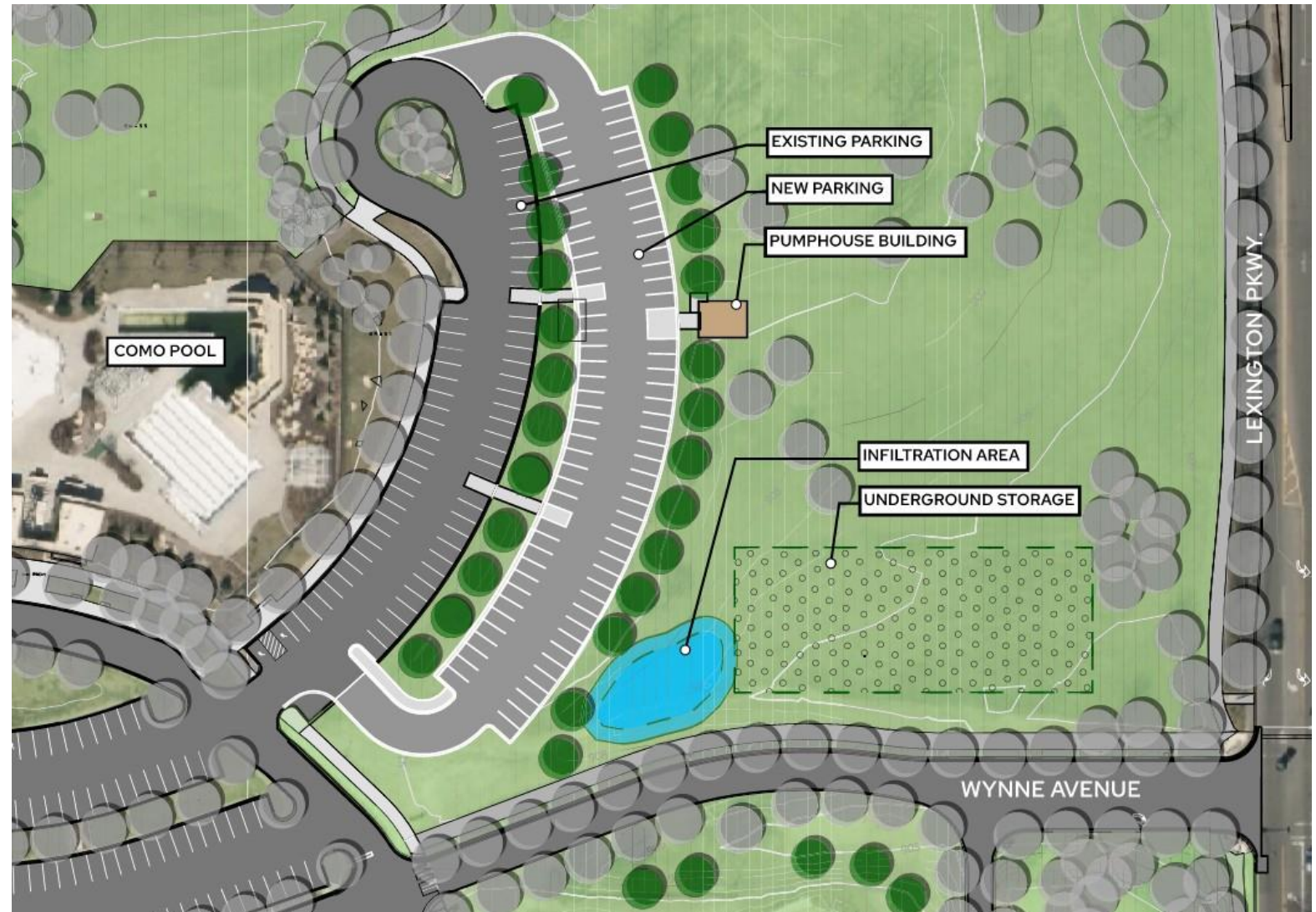




Park Design

Additional Parking

- Approximately 83 additional parking stalls.
- To help serve programming of additional field space.
- EV Ready Spaces
- Will be included an alternate bid item, if funding is available.





Park Design

Traffic Control

Wynn Ave. Road Closure during Major Construction –

(Utility Crossings, Earthwork, and Chambers)

Enter at Wynne Ave.

- One-Way Detour – Jessamine Ave
- Two Way Traffic - Beulah Ln.
- Two-Way Traffic Wynne Ave.

Enter at Hamline Ave.

- Two Way Traffic - Beulah Ln.
- Two-Way Traffic Wynne Ave.

Exit at Hamline Ave. **ONLY**





Stormwater Design

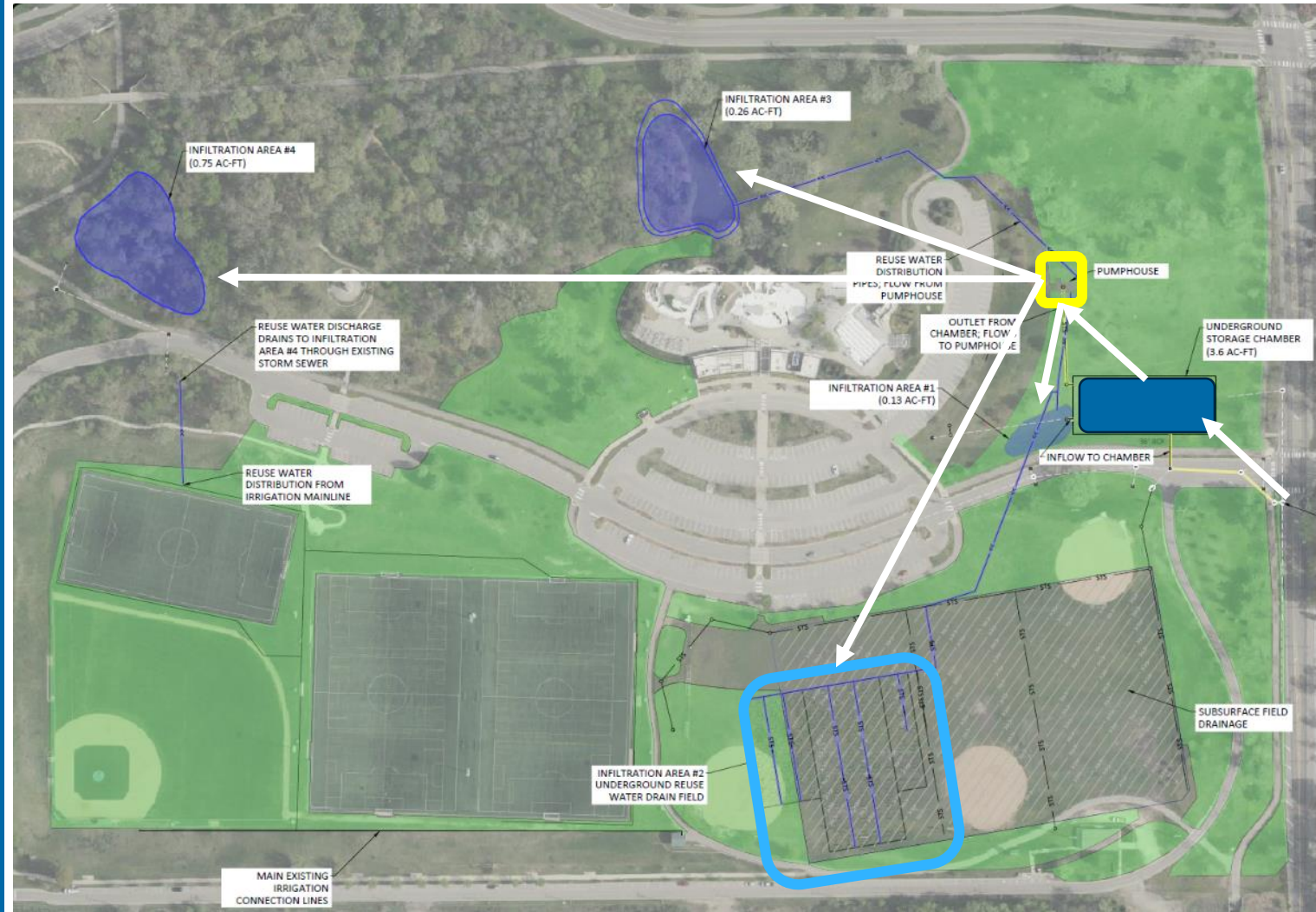
- 156-acre drainage area
- ~12 acres already receiving treatment
- 61 acres untreated impervious





Stormwater Design Updates

Storage = 3.60 AF
 Surface = 1.21 AF
 Below Field = 0.78 AF
 1.1" WQ Vol. = 5.59 AF

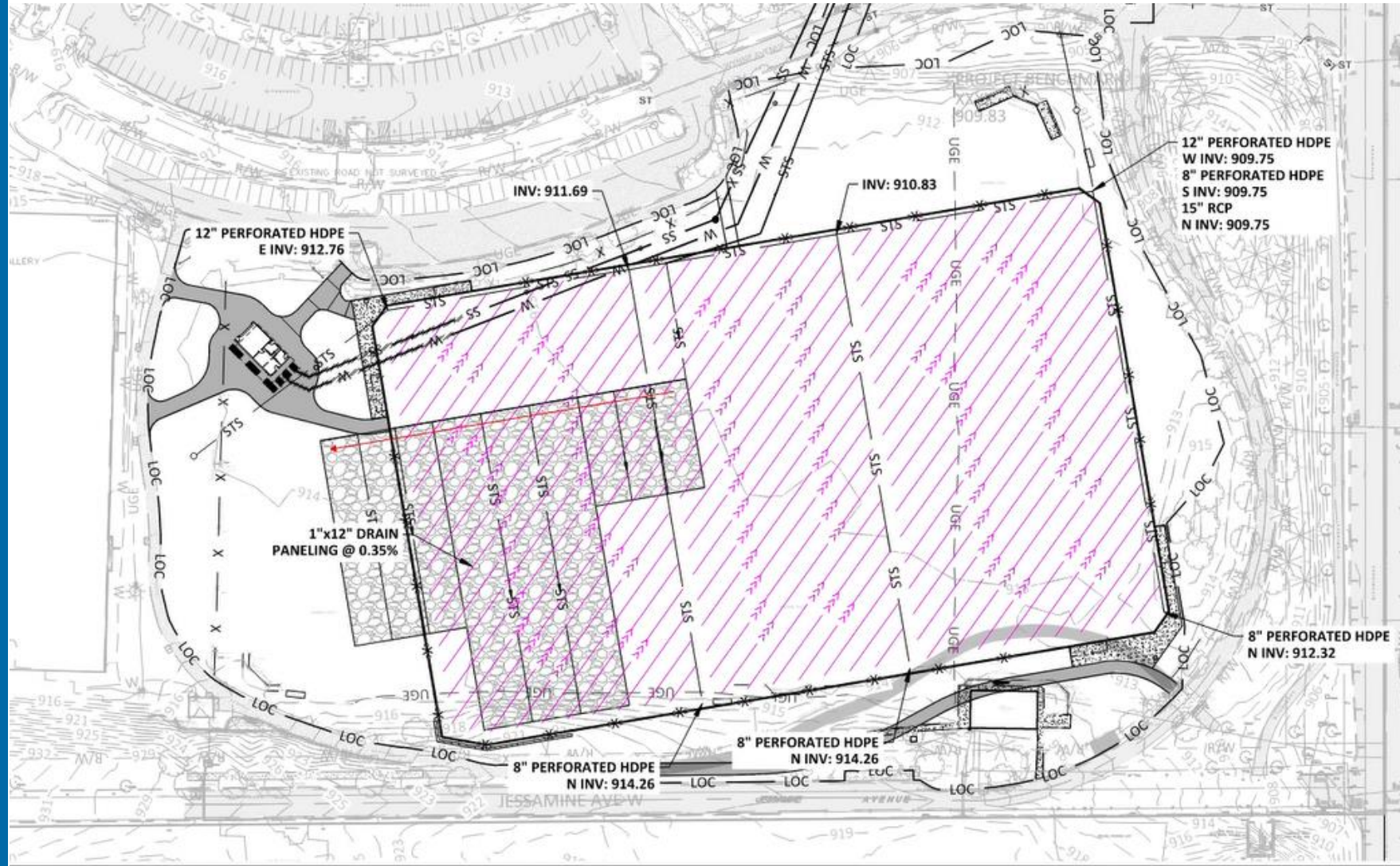


PRELIMINARY
NOT FOR CONSTRUCTION



Stormwater Design Updates

Below-field infiltration





Stormwater Design

Pumphouse:

- Pumps, filtration, controllers
- Level sensors in infiltration areas
- Smart controllers
- Uses weather forecasts to optimize performance
- Conditioned for winter operation





Project Budget

Cost Estimate:

\$11 Million

Secured Funding:

Park Improvements

City of Saint Paul

NFL Grant – request submitted

Stormwater

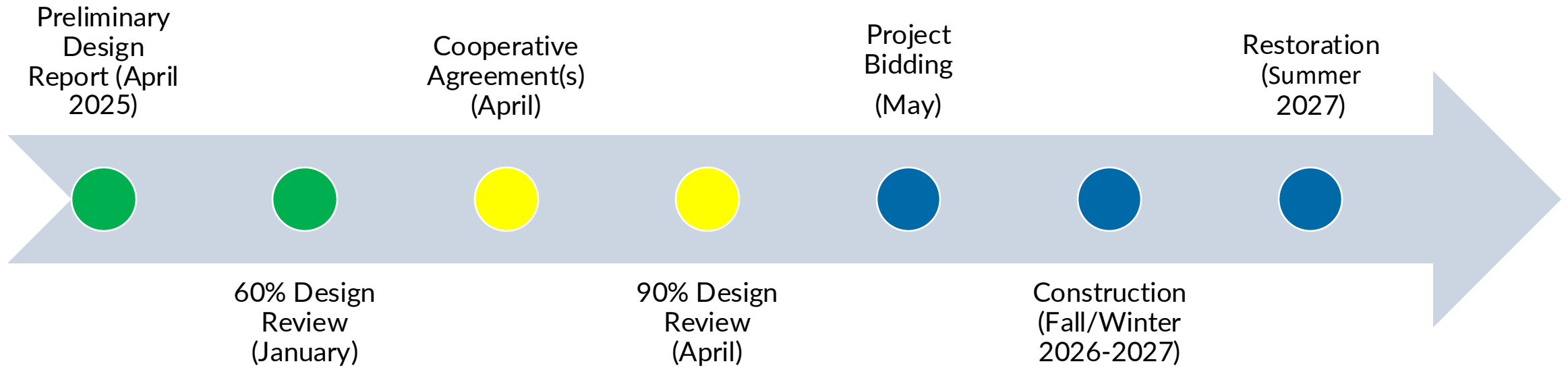
CRWD Levied Funds (2023-2025)

BWSR Grant

MPCA Stormwater Resiliency Grant

Project Timeline

Next Milestone: Cooperative Agreement(s) and 90% Plans





Questions?

Contact:

Saint Paul Parks and Recreation

Dave Ronzani

David.Ronzani@ci.stpaul.mn.us

651-266-6410

Capitol Region Watershed District

Nate Zwonitzer

nzwonitzer@capitolregionwd.org

651-202-3746