

L10 SINGLE LANTERN STANDARD DETAIL-ALTERNATE

ST PAUL PATINA
GREEN COLOR

BLACK COLOR

HOLOPHANE ARLINGTON POSTTOP
OR EQUIVALENT
IN 70W/100W EQ. OUTPUT

16"
CAPITOL ON
4"X14"
TENON

ST PAUL
BROWN COLOR

98.5"

13'

NO SCALE

6.5"

22.5"

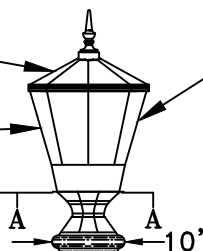
1"-1.5"

FOR FOUNDATION DETAIL
SEE ST PAUL STANDARD
SHEET 5008

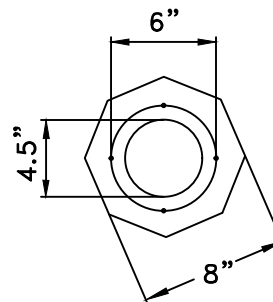
I hereby certify that this plan, specification or
report was prepared by me or under my direct
supervision and that I am a duly Licensed
Professional Engineer under the laws of the
State of Minnesota.

B. Hawkins
BENJAMIN J. HAWKINS

Date: 11/15/2024 Lic. No. 49104

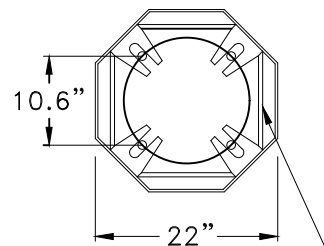


SECTION A-A

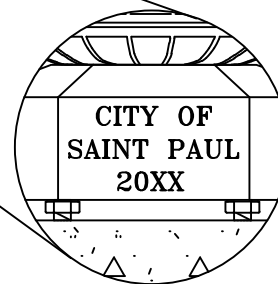
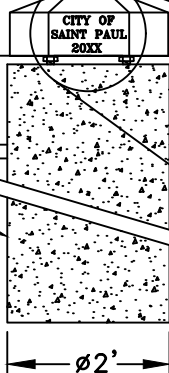


SECTION B-B

SLOTS FOR 1" BOLTS
ON 15" BOLT CIRCLE



OCTAL BASE
ANCHOR RING



APPROVED

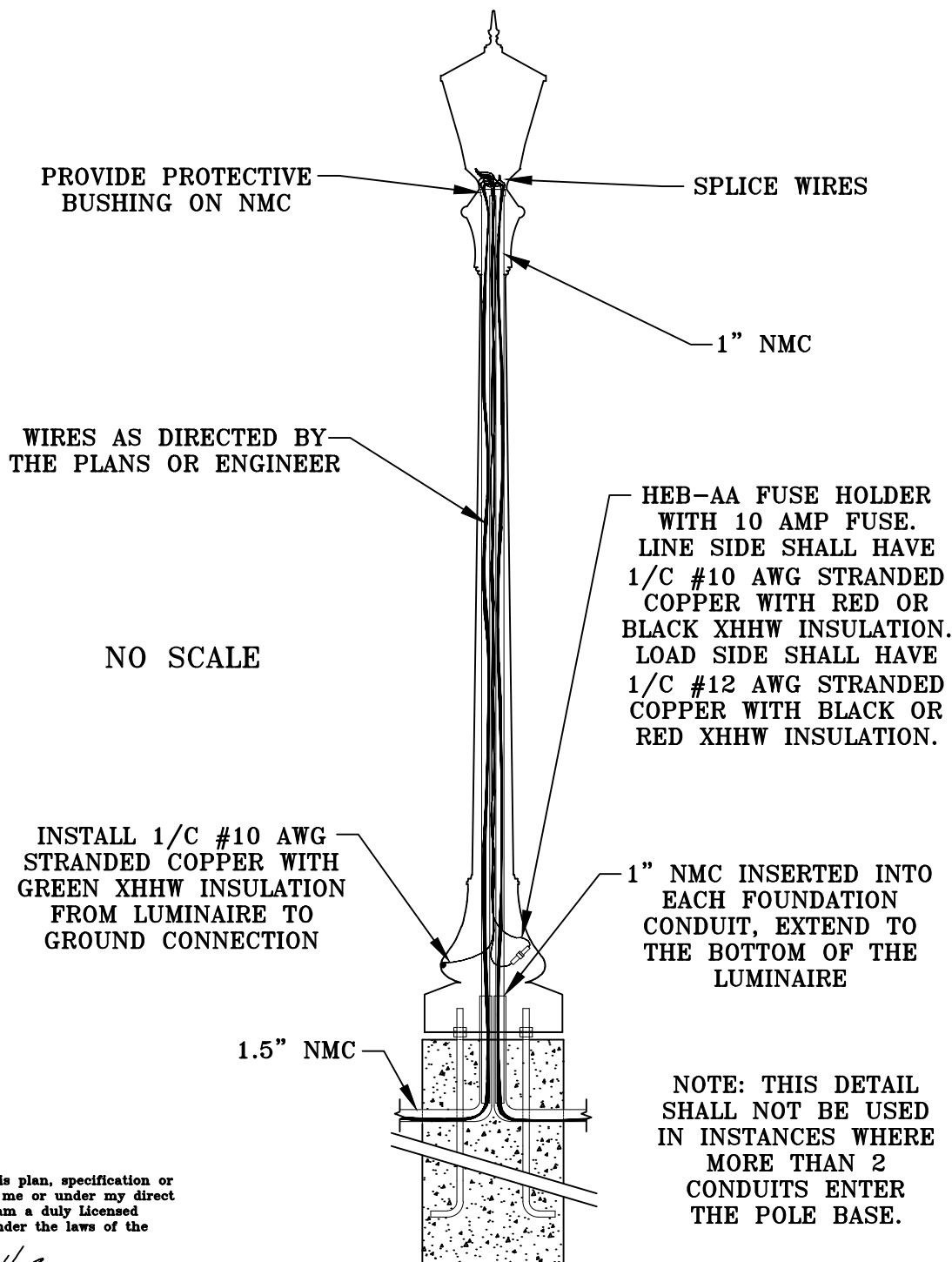
Mark Guter
CITY ENGINEER

CITY OF ST PAUL DEPARTMENT OF PUBLIC WORKS
L10 LANTERN STANDARD DETAIL-
ALTERNATE

DATE OF
REVISION:
NOVEMBER
2024

STANDARD
PLATE
NO.
5056A
SHEET 1 OF 2

L10 SINGLE LANTERN STANDARD DETAIL-ALTERNATE (CROSS-SECTION VIEW)



NO SCALE

I hereby certify that this plan, specification or report was prepared by me or under my direct supervision and that I am a duly Licensed Professional Engineer under the laws of the State of Minnesota.

B. Hawkins
BENJAMIN J. HAWKINS

Date: 11/15/2024 Lic. No. 49104

APPROVED
Mark Pate
CITY ENGINEER

CITY OF ST PAUL DEPARTMENT OF PUBLIC WORKS
L10 LANTERN STANDARD DETAIL-
ALTERNATE

DATE OF
REVISION:
NOVEMBER
2024

STANDARD
PLATE
NO.
5056A
SHEET 2 OF 2