



City of Saint Paul Public Works

# Arlington Avenue Reconstruction



**SAINT PAUL**  
PUBLIC WORKS





# Agenda

---

Introductions

---

Project Overview

---

Design Layout Alternative 1

---

Design Layout Alternative 2

---

Key Design Features

---

Layout Impacts

---

Questions?



# Project Overview

The City of Saint Paul plans to reconstruct over two miles of Arlington Avenue from West Wheelock Parkway to Edgerton Street in 2027 and 2028.

Project construction will occur in two phases in 2027 and 2028.

## Project Improvements

**Safer travel lanes, bikeways, and parking**



**Accessible pedestrian signals, signage, and lighting**



**New sidewalks along both sides of the roadway**



**Installation of new curb and gutter**



**New pavement**



**Coordinated utility work**



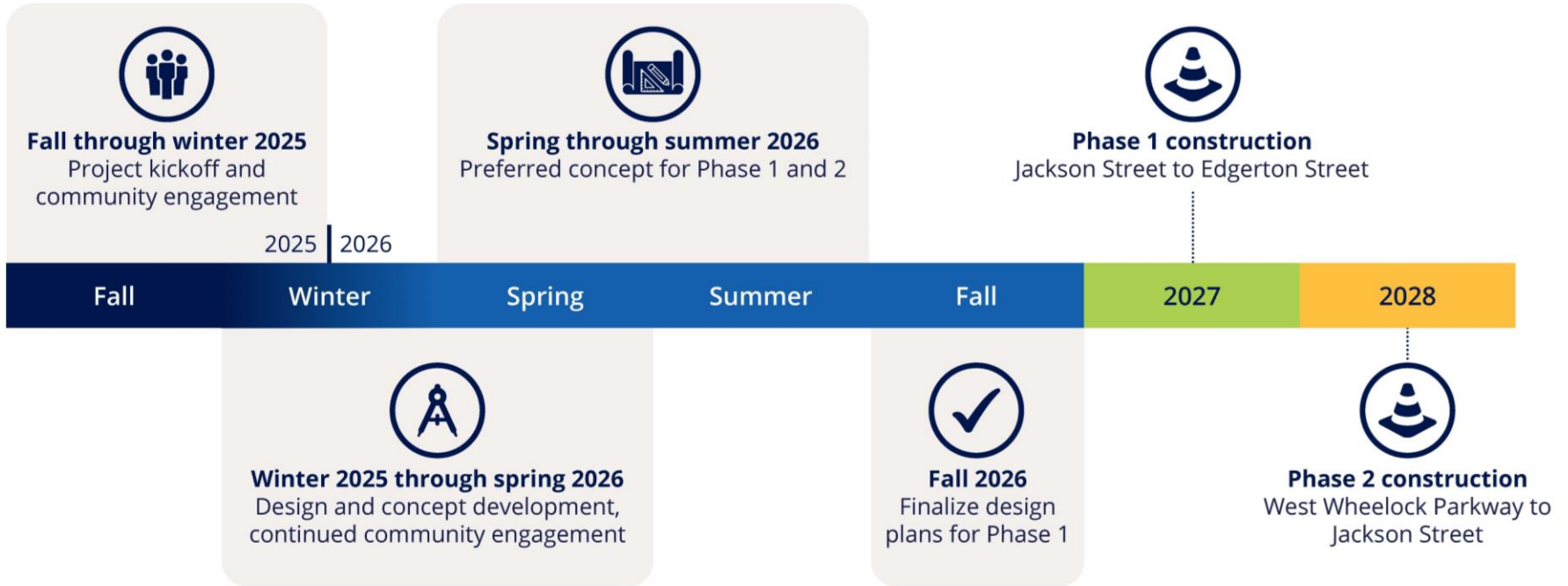


# Project Overview





# Timeline





# Design Layout: Alternative 1



## Key Takeaways

- Shared use path on the south side
- Sidewalk on the north side
- Bumpouts throughout the project area
- Raised crosswalks on some side streets
- Larger boulevards (grass areas)
- Tree impacts



# Design Layout: Alternative 2



## Key Takeaways

- On-street painted bike lanes
- Sidewalks on the north and south side
- Bumpouts throughout project area
- Smaller boulevards (green space) compared to Alternative 1
- Tree impacts



# Key Design Features

## Shared Use Path

A path made of asphalt behind the curb, at sidewalk level, shared between bikes and pedestrians.

### Benefits

- Safer for people who bike
- Wider path for people who walk, bike, and roll
- Larger boulevards

### Drawbacks

- Bikes and people who walk and roll share a path
- Asphalt path requires additional maintenance





# Key Design Features

## On-Street Bike Lanes

Painted bike lanes on each side of the street, allowing bike travel in each direction.

### Benefits

- A lane for people riding bikes
- Separate space from people who walk and roll

### Drawbacks

- No separation between cars and bikes
- Less space for boulevards
- Clearing snow from bike lanes is challenging





# Key Design Features

## Raised Crosswalk

Alternative 1 includes raised crosswalks that bring the roadway up to sidewalk level, helping slow cars and making people walking and biking more visible.

### Benefits

- Reduce vehicle speeds
- Increased safety for walking and biking

### Drawbacks

- More difficult for snow removal
- Requires more maintenance





# Key Design Features

## Bumpout

Both design options include bumpouts on the side streets along Arlington Avenue. Bumpouts extend the sidewalk and boulevard, shortening crossing distances, slowing vehicle speeds, and adding green space.

### Benefits

- Reduce vehicle speeds
- Increased safety for walking, rolling, and biking
- Additional green space

### Drawbacks

- Less space for parking





# Layout Impacts

## Example of the design layout



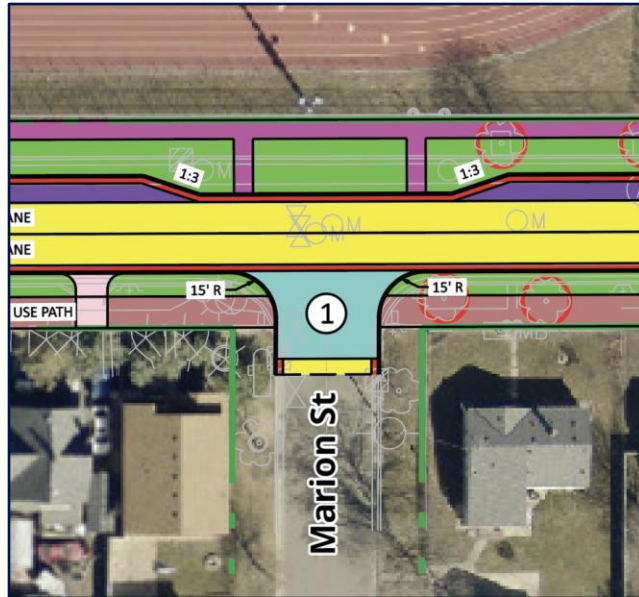
### Legend

- Road
- On-street bike lane
- Parking
- Curb
- Sidewalk
- Shared use path
- Raised crosswalk
- Driveway
- Boulevard
- Property line
- Potential tree impacts
- Raised crosswalk design to be evaluated during final design



# Layout Impacts: Near Washington Tech

## Bumpout design



## No bumpout design



*Areas with bumpouts may impact parking spaces.*

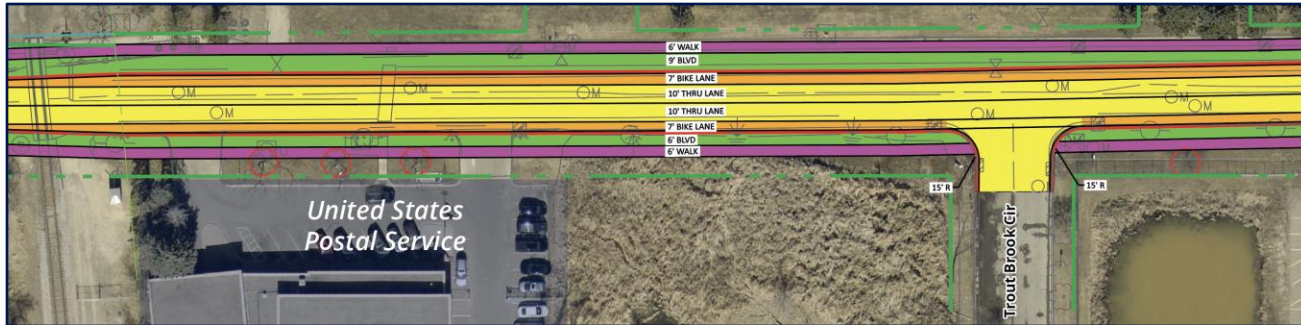


# Layout Impacts: Soo Line to Jackson Street

## Parking on the north side



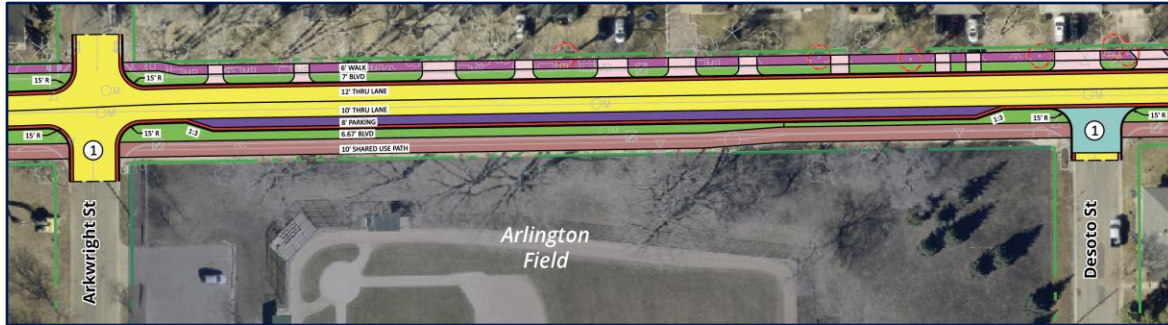
## No parking in this section



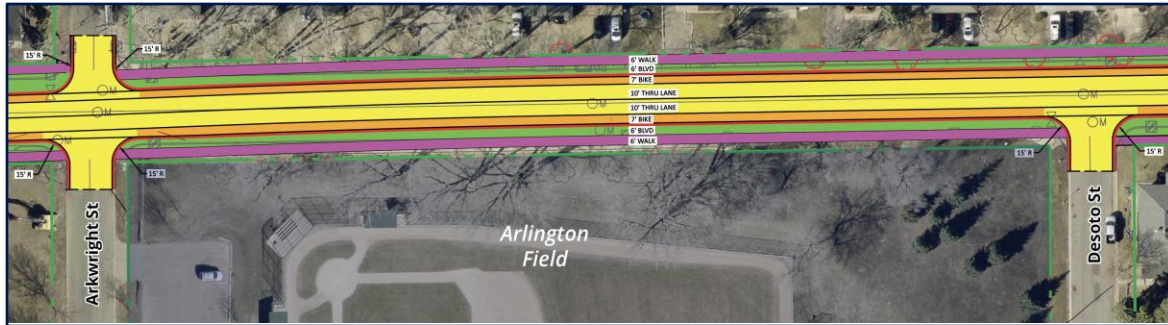


# Layout Impacts: Near Arlington Field

## Parking on the south side



## No parking in this section





# Questions?

## Saint Paul Public Works



**Phone**

651-266-1104



**Email**

Jary.Lee@ci.stpaul.mn.us

Need this translated? Call us at 651-266-6100.

¿Necesita esta traducción? Comuníquese con nosotros al 651-266-6100.

Ma u baahan tahay tarjamadaan Nago soo wac 651-266-6100. Xav tau

qhov no txhais los? Hu rau peb ntawm 651-266-6100.

For more information  
and to sign up for  
updates, visit our  
project website:



[stpaul.gov/arlingtonavenue](http://stpaul.gov/arlingtonavenue)