



New for 2026- Construction Signage

WHAT

- Project identifying signage will be a new permit condition and requirement for:
 - Any closures on trunk highways, county roads, downtown and arterial roadways consisting of full road closures or full lane closures.

WHEN

- Signs shall be posted when the non-emergency closure is set up.
- Signs shall be posted within 24 hours of emergency closures.

WHY

- The public is interested in who is doing work and when it will be done. We must make such information easier for them to know. Having contacts made directly to the permittee is logical.



Signage Example



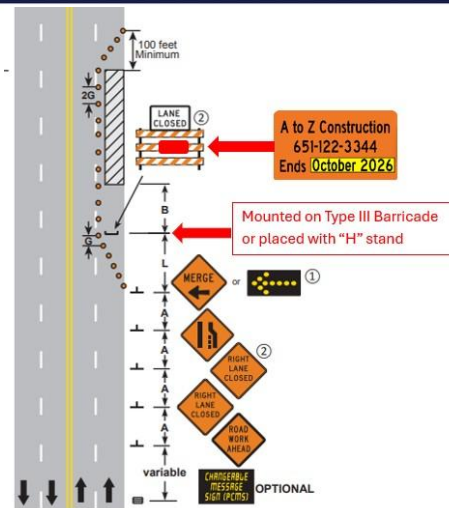
New for 2026- Construction Signage

HOW

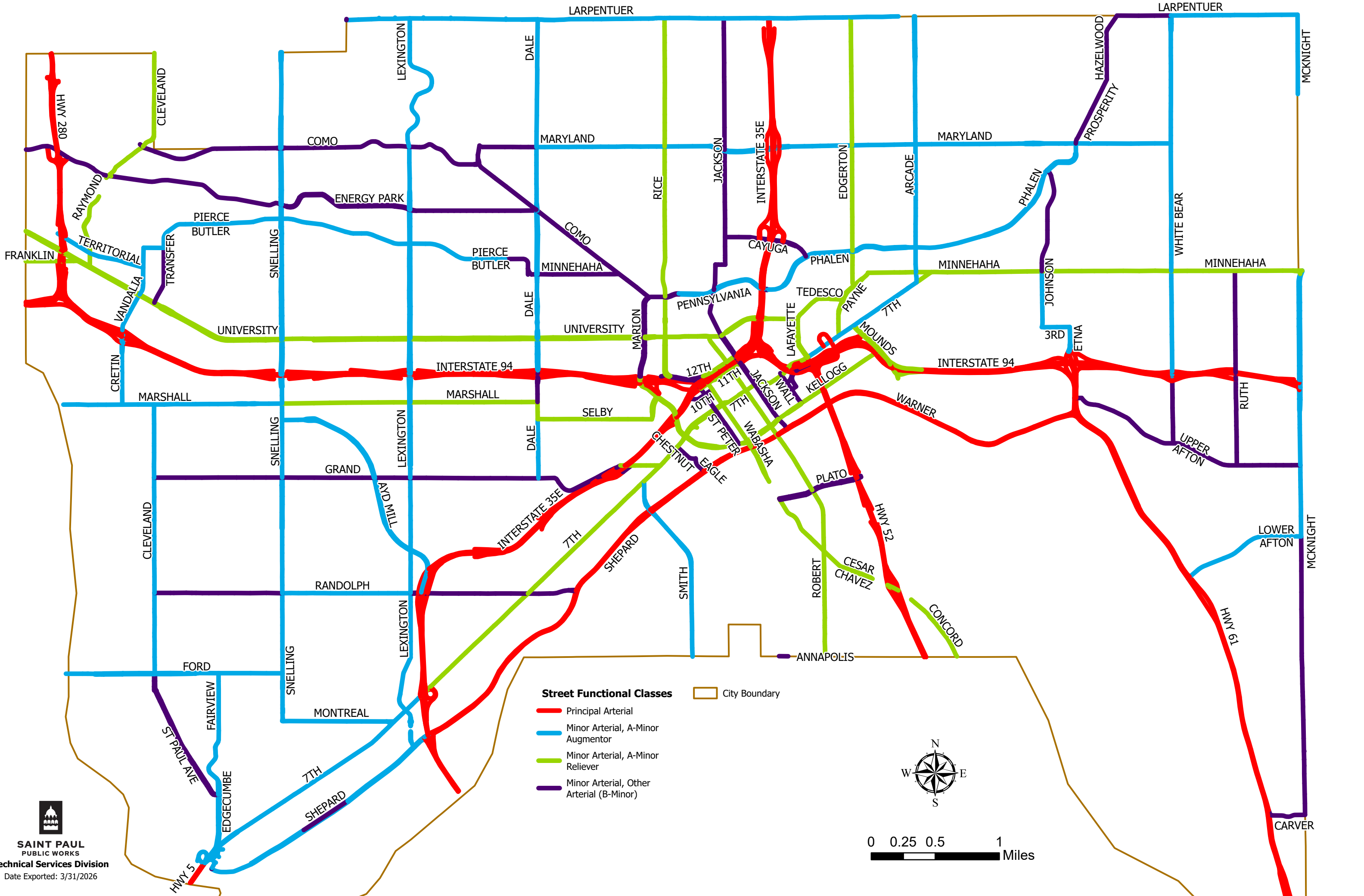
- Identifying signs shall be 3M Diamond Grade 3 in compliance with MnDOT 2564 specifications, a minimum size of 24" wide, 18" high. Have black 3" lettering on orange. Posted on temporary H stand or similar or on Type III barricade in accordance with MMUTCD requirements.
- Information contained shall include the following:
 - Name of contractor- line 1
 - Contact number of contractor- line 2
 - Modifiable end date or other pertinent date of project- line 3
 - These signs are intended to be reused many times.

WHERE in WORK ZONE

- Posted at the start of all mainline entry points to a project either at the full road closure points adjacent to the Type III road closed barricade or full lane end of taper point adjacent to the lane closed barricade.



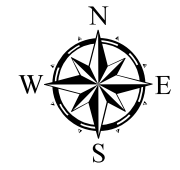
Placement Example



Street Functional Classes

- Principal Arterial
- Minor Arterial, A-Minor Augmentor
- Minor Arterial, A-Minor Reliever
- Minor Arterial, Other Arterial (B-Minor)

City Boundary



0 0.25 0.5 1 Miles