



STPAUL.GOV



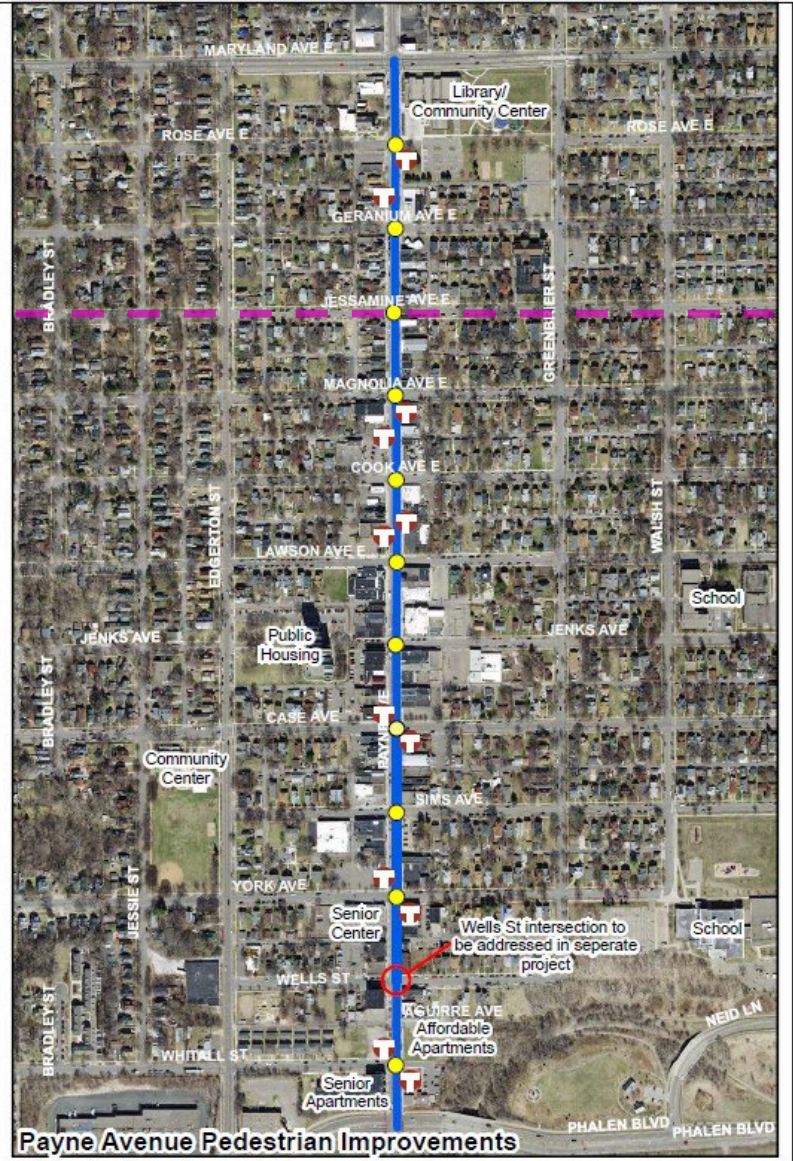
Transportation Committee 3.16.2026

Payne Ave. Pedestrian Intersection Improvements 2026



Project Area

- 11 intersections between Phalen Blvd. and Maryland Ave.
- All locations are on the City's High Injury and High Crash Network.
- Intersection improvements include updating ramps, bump outs, medians, and update Case signal
- Regional Solicitation funding \$1,780,000
- Working with consultant for design and engagement





Project Status



- Compiled comments from first phase of engagement
- Close to final designs
- Starting second phase of engagement



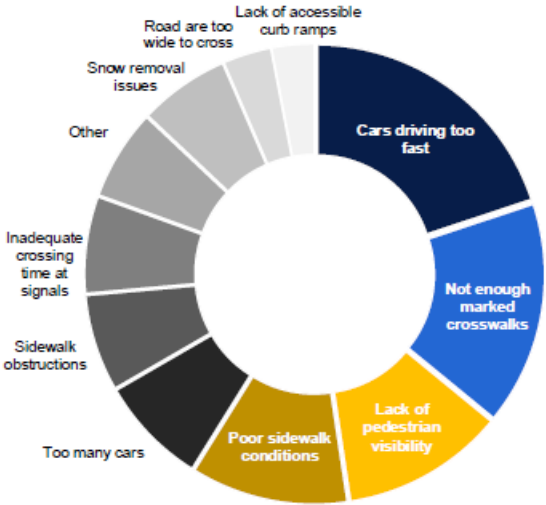
Phase 1 engagement summary:

- 67 survey and comment map responses (37 of them associated with a business) (Oct. 28 – Jan 1). Most respondents were white (52%), Asian or Asian American (17%)
- When asked about how much they would like to walk on Payne Avenue, respondents said the same or more than they do currently.
- Edgerton High Rise
- Payne Phalen District Council

What did we hear?

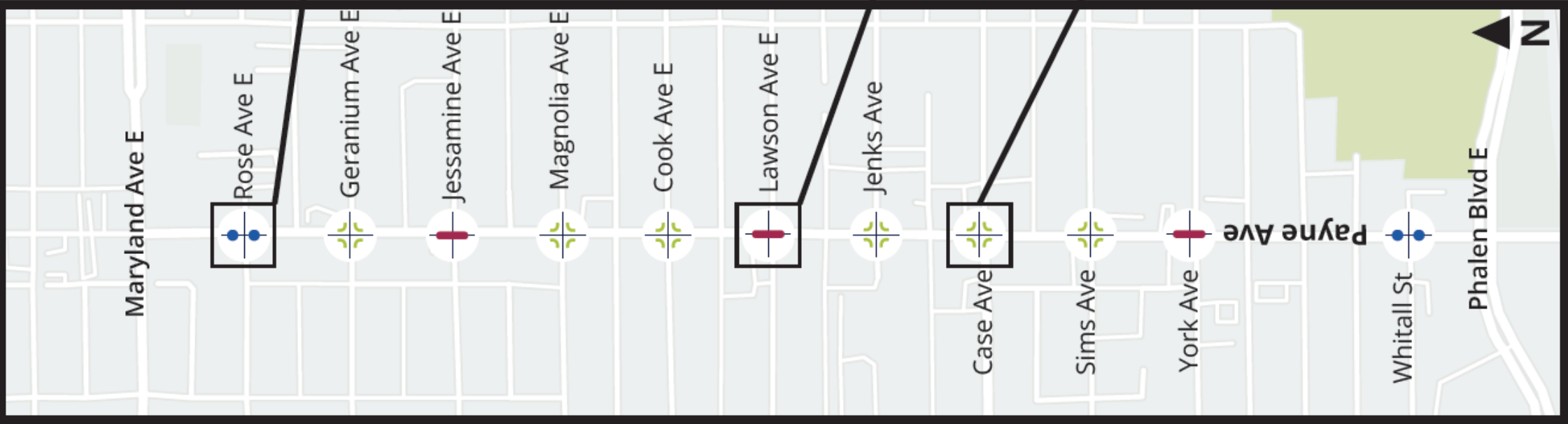
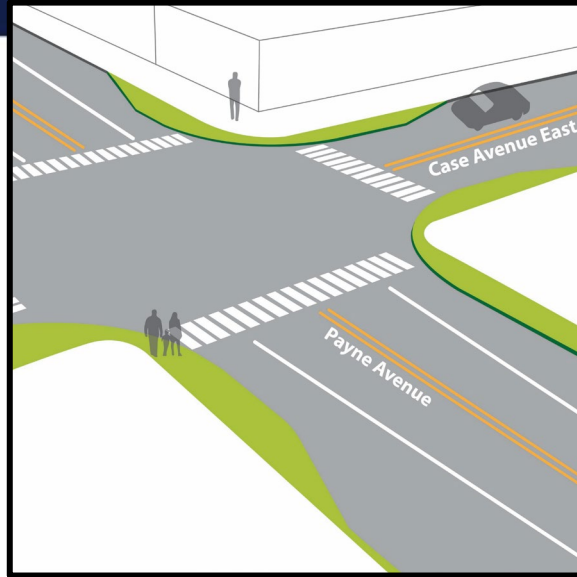
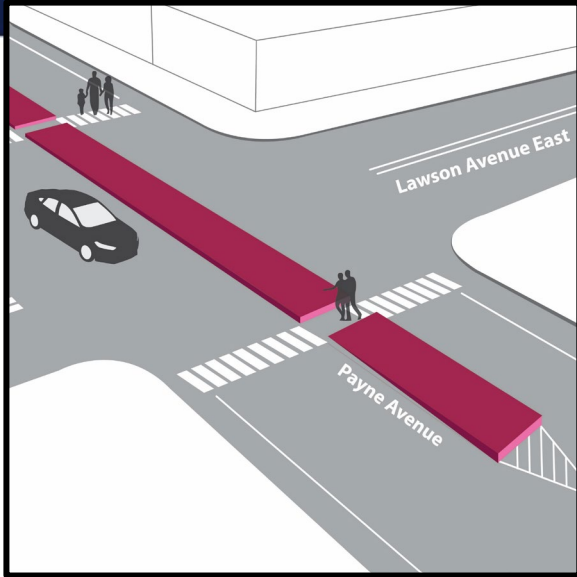
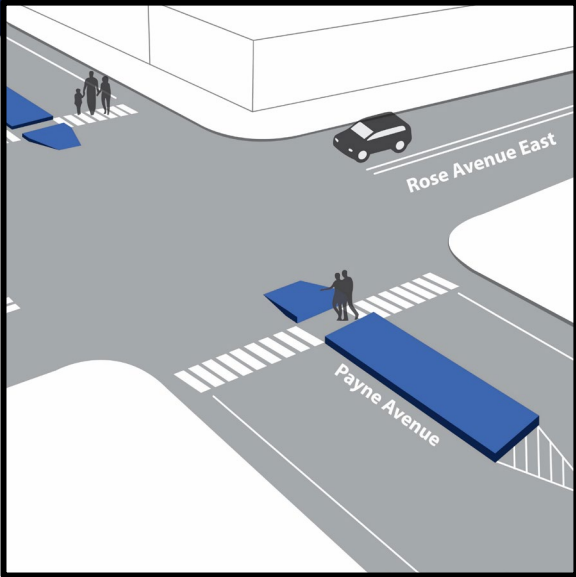
Top 4 pedestrian issues:

1. **Cars driving too fast (20%)**
2. **Not enough marked crosswalks (16%)**
3. **Lack of pedestrian visibility (11%)**
4. **Poor sidewalk conditions (11%)**





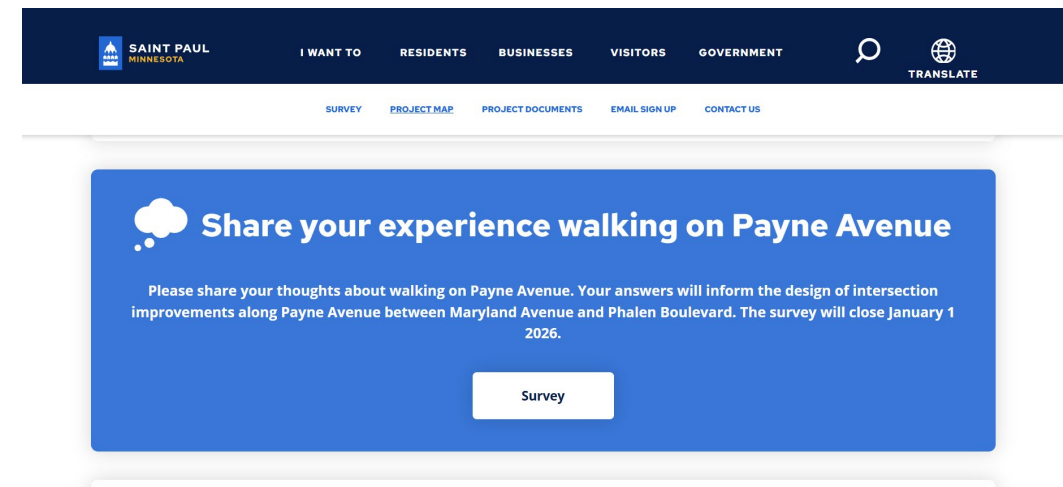
Designs





Next Steps

- Share second phase of engagement, including designs and business survey
- Final designs in April
- Coordinate with other construction projects this year including East 7th and Arcade, Maryland Avenue, & SPRWS
- Construction this summer, likely start in July 2026 and could go into 2027 (weather dependent)



Sign up for project updates:
stpaul.gov/PayneAvenue

Questions

stpaul.gov/PayneAvenue

Laura.Krause@stpaul.gov

Thank you!



SAINT PAUL
PUBLIC WORKS

STPAUL.GOV