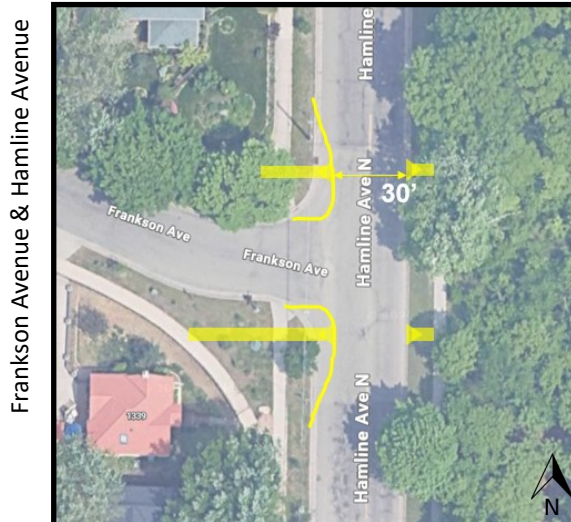
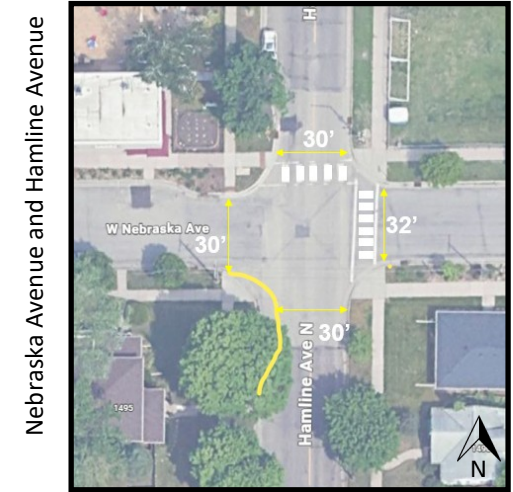
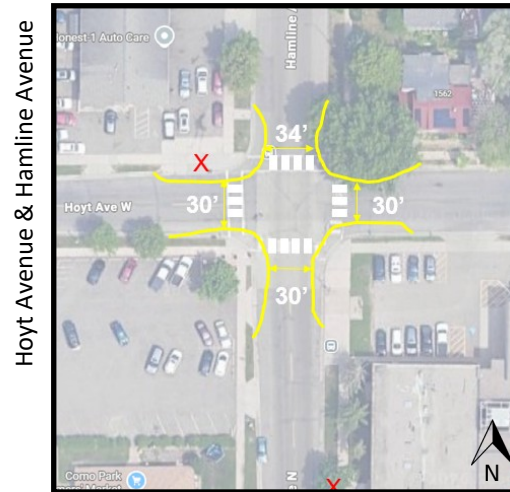


Chelsea Heights Safe Routes to School, 2026

Construction of bumpouts (shown in yellow below) at six intersections near Chelsea Heights Elementary School. Bumpouts shorten pedestrian crossing distances and increase the visibility of pedestrians at intersections. Construction schedule to start during summer break.



Comments/Questions?

Project Webpage: stpaul.gov/ChelseaHeightsSRTS

Contact: Laura Krause, Laura.Krause@stpaul.gov or 651-266-6037



**SAINT PAUL
PUBLIC WORKS**