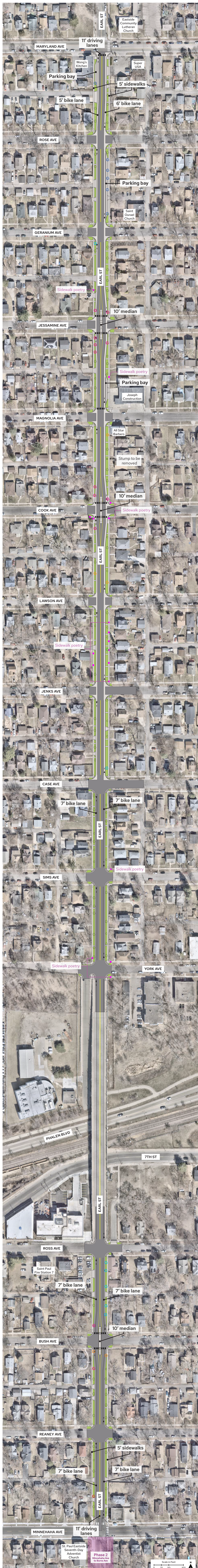


Proposed Earl Street Layout

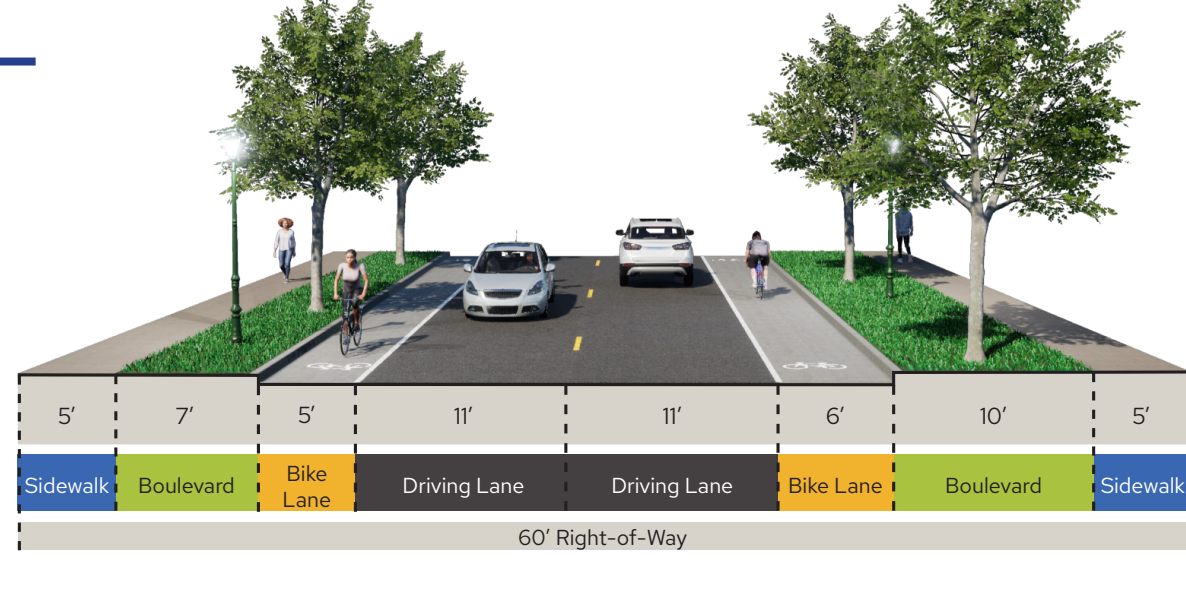


Trees Legend

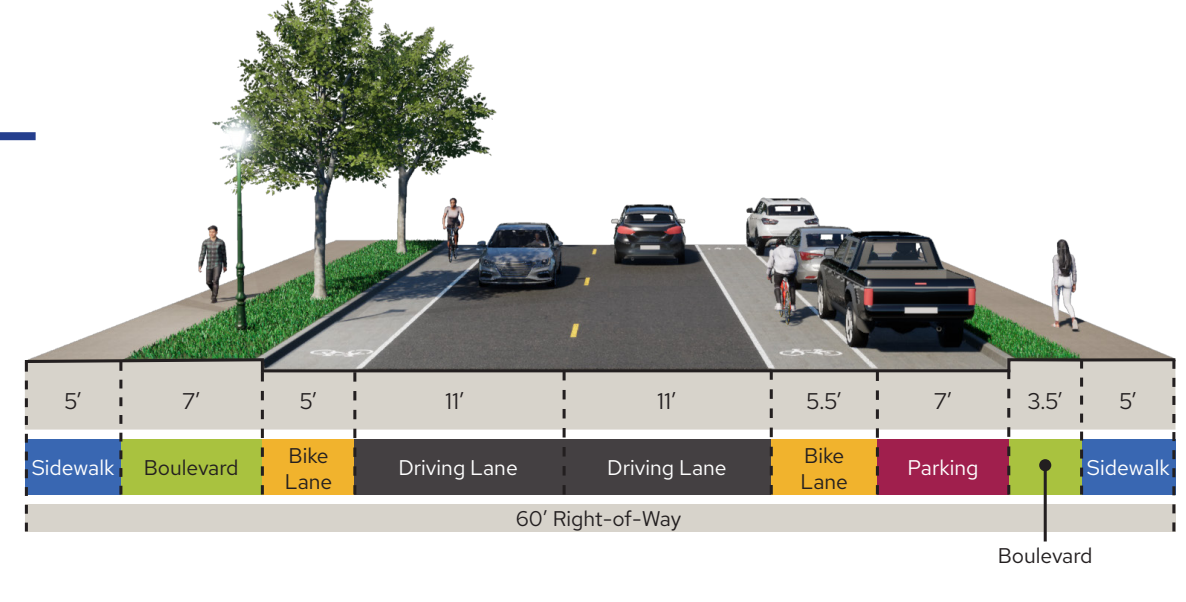
- Existing Tree to Remain
- Tree to be Removed*:
 - Driveway Design
 - Poor Tree Health
 - Median
 - Drainage Trench or Utility
 - Proximity to Existing Curb
 - Parking Design

*Removed trees will be replaced nearby where feasible. A total of 32 trees will be removed and 46 will be planted in replacement.

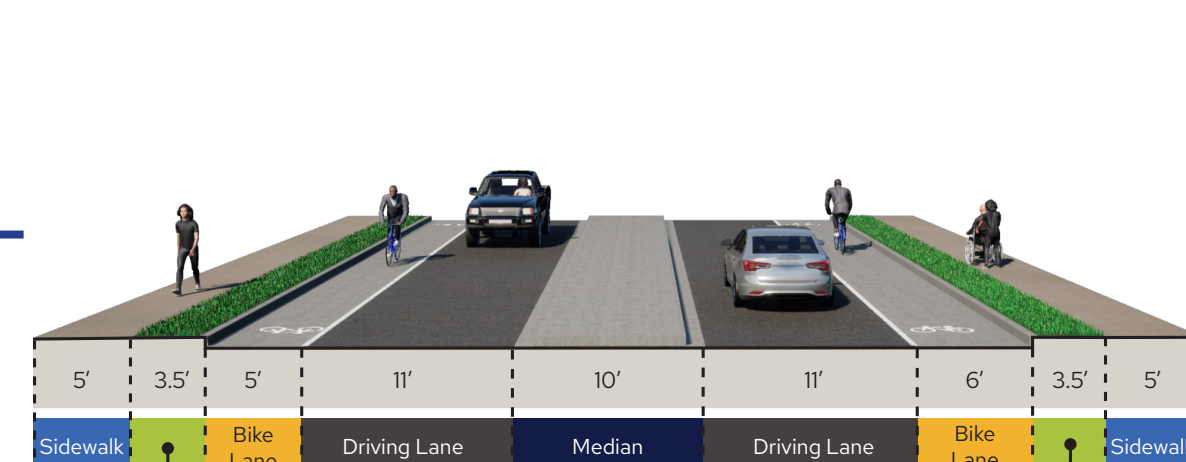
Typical Section (Case Ave to Maryland Ave)



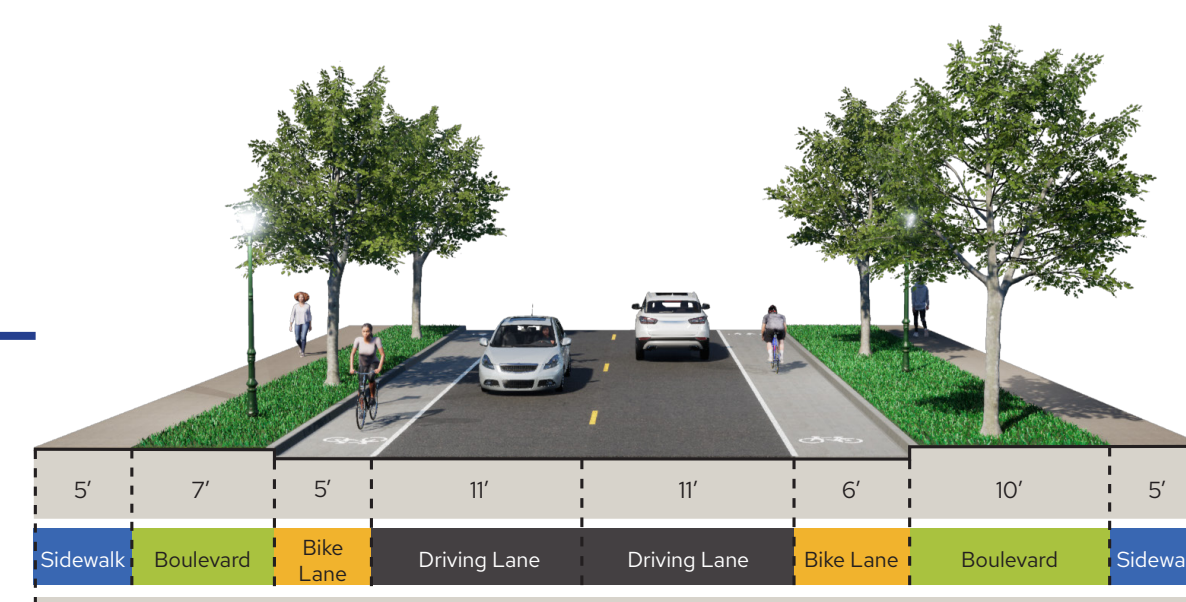
Typical Section (Parking Bays)



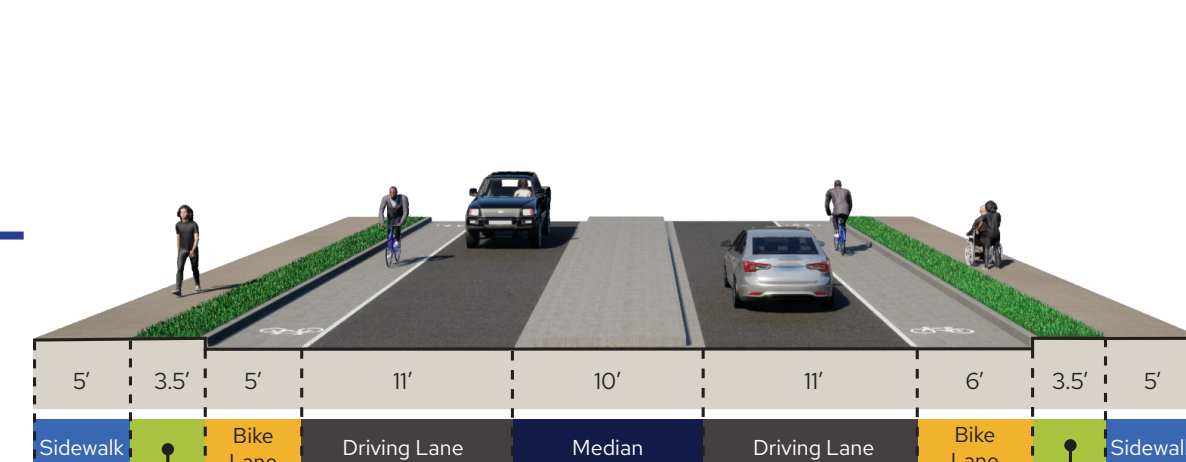
Typical Section (Median at Jessamine Ave)



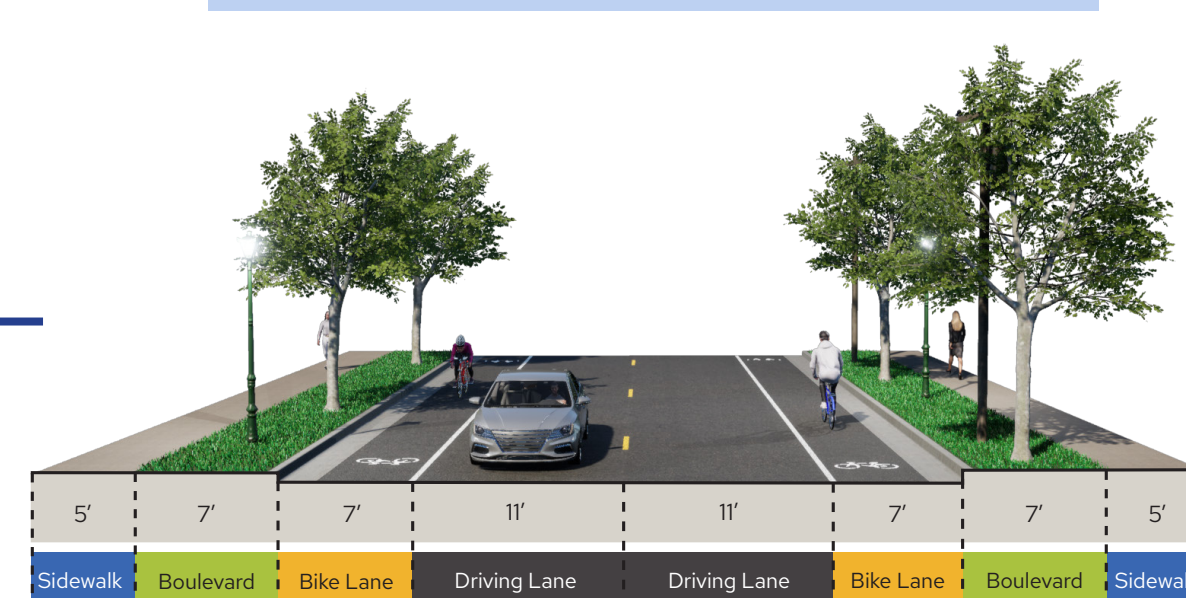
Typical Section (Case Ave to Maryland Ave)



Typical Section (Median at Cook Ave)



Typical Section (Minnehaha Ave to Case Ave)



Trees Legend

- Existing Tree to Remain
- Tree to be Removed*:
 - Driveway Design
 - Poor Tree Health
 - Median
 - Drainage Trench or Utility
 - Proximity to Existing Curb
 - Parking Design

*Removed trees will be replaced nearby where feasible. A total of 32 trees will be removed and 46 will be planted in replacement.

Proposed Earl Street Layout