



STPAUL.GOV

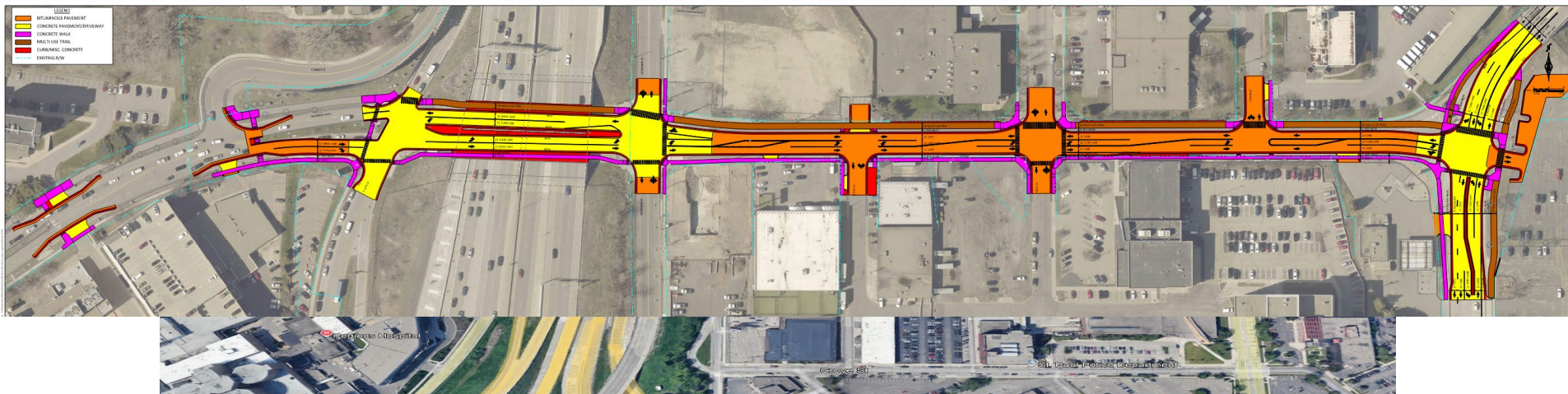
CITY OF SAINT PAUL

University Avenue Reconstruction Project



Reconstructing University Avenue

- From the west side of L'Orient Street to Lafayette Road
- New watermain and storm sewer below ground
- New road layout with additional street crossings, traffic signals and lighting





Overall Phasing Plan





Project Timeline

Phase 1: Early June – Mid -
Summer

Phase 2: Mid -Summer – End of Autumn





Phase 1: L'Orient to N. Pine Street; Lafayette Road intersection





Project Information

PHASE 1 ACCESS AND CONCURRENT WORK AREAS

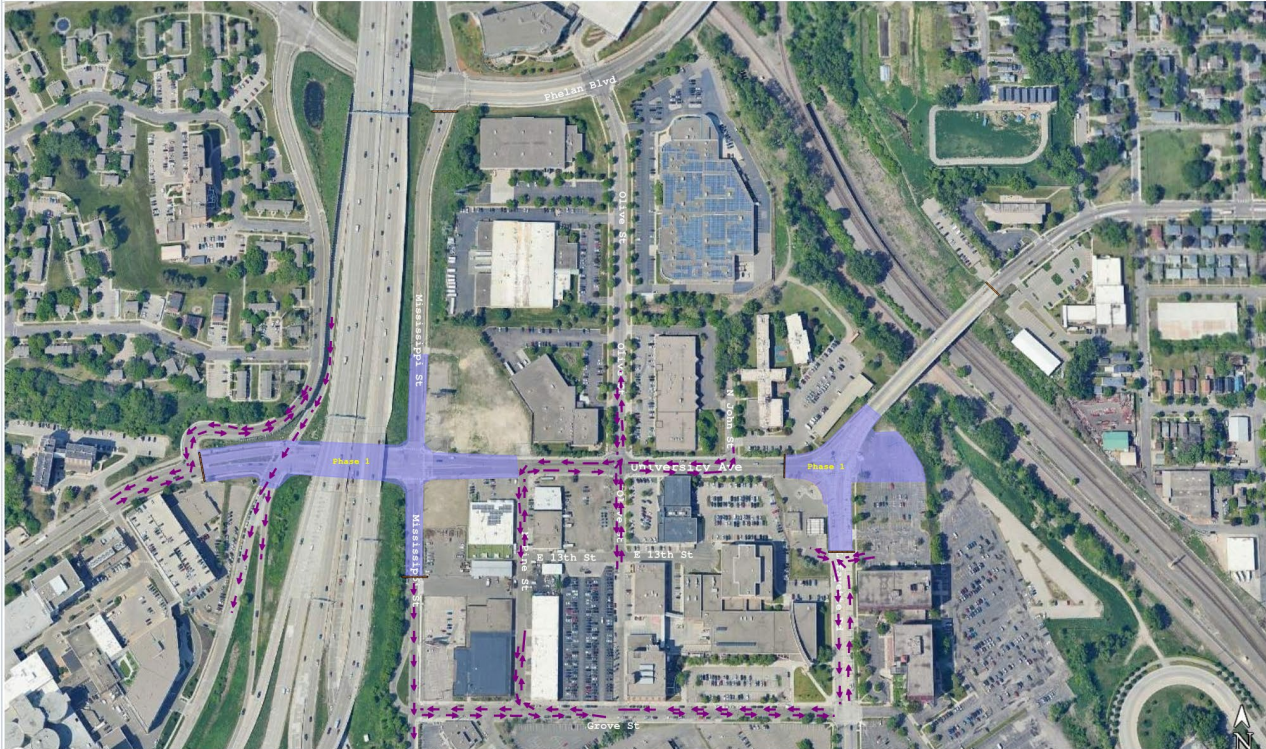
University Avenue Reconstruction | Saint Paul, MN | L'Orient St. to Lafayette Rd.

NEW LOOK CONTRACTING, INC.

PROPOSED PHASING APPROACH R1

PLAN VIEW - CONCEPTUAL PHASING / ACCESS APPROACH

N.T.S.



PHASE / ACCESS LEGEND

- PHASE 1**
West of Mississippi to L'Orient plus Lafayette / parking lot work area.
- PHASE 2**
Mainline corridor shifted from original Phase 1; completed after Phase 1 access areas.
- ACCESS FLOW**
Local access routing and controlled movements shown conceptually.

KEY PHASING INTENT

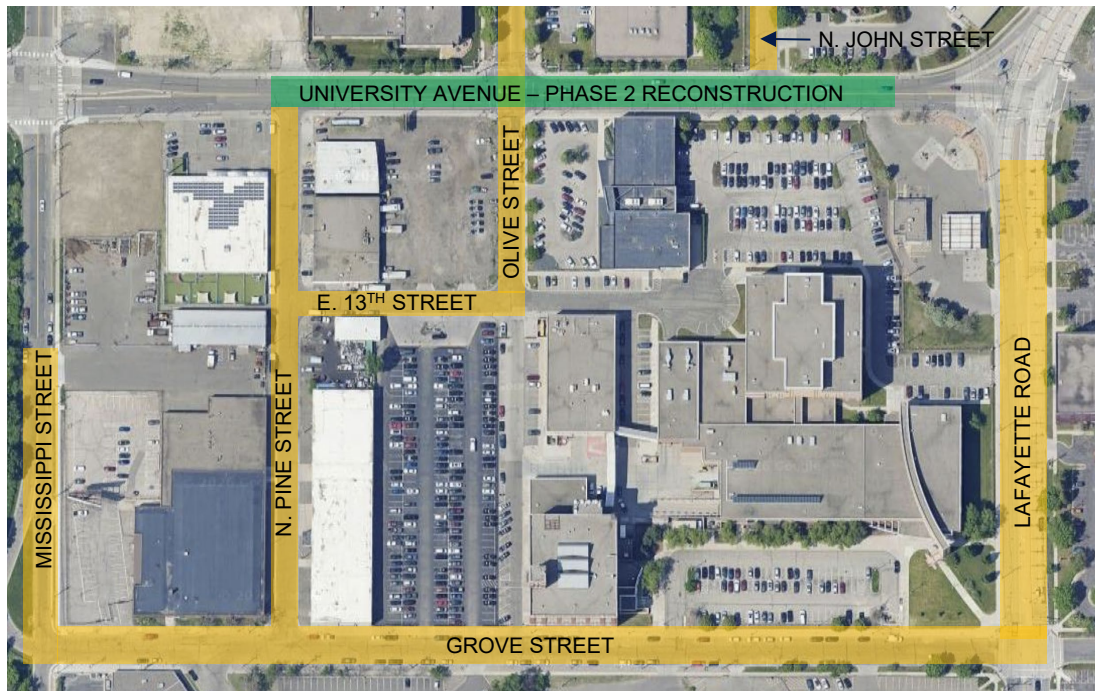
- Phase 1 focuses on the west approach and Lafayette / parking lot work areas.
- Phase 2 corridor remains accessible during Phase 1, allowing the central corridor to stay functional until the mainline closure.
- Access flows are conceptual and intended to maintain local, business, emergency, and delivery access.
- Coordinate lane restrictions and driveway adjustments with affected properties before implementation.



GENERAL NOTES

- This exhibit is intended for meeting discussion and conceptual review only.
- Final traffic control, detour signing, access routing, pedestrian accommodation, and TPAR documents shall be submitted for City / Engineer review.
- Contractor to coordinate final sequencing with utility conflicts, adjacent work, property access, material lead times, and field conditions.



Access during Phase 1: L'Orient to N. Pine Street; Lafayette Road intersection



-  AVAILABLE ACCESS
-  AVAILABLE ACCESS AT UNIVERSITY DURING THIS PHASE



Phase 2: University Avenue between N. Pine Street and west of Lafayette Road





Access during Phase 2: University Avenue



AVAILABLE ACCESS



For more information:

- Project website: [University Avenue Reconstruction | Saint Paul Minnesota](#)
- Sign-up for University Avenue Reconstruction Project Updates, for weekly updates in your inbox!

Sign Up for University Avenue Reconstruction Project Updates

Email Address

- Questions?:
 - Jack Connelly, Public Works Street Design and Construction, 651.266.5417, Jack.Connelly@ci.stpaul.mn.us
 - Brandon Mensing, Bolton and Menk Construction Manager, 612.289.0313, Brandon.Mensing@Bolton-Menk.com



Investing in Saint Paul Streets: Common Cent:

- A portion of this street reconstruction project will be paid for by a 1% local option sales tax, called [Common Cent](#). This sales tax was approved by Saint Paul voters in November 2023. A portion of the project will also be funded through assessments to property owners adjacent to the project. The estimated assessment rate is based on a third-party special benefit analysis of the property values in the project area. Property owners will receive a notice of the estimated rate and date for a public hearing when estimated rates are available. More information on assessments can be found at www.stpaul.gov/specialassessments.



STPAUL.GOV



Thank You